

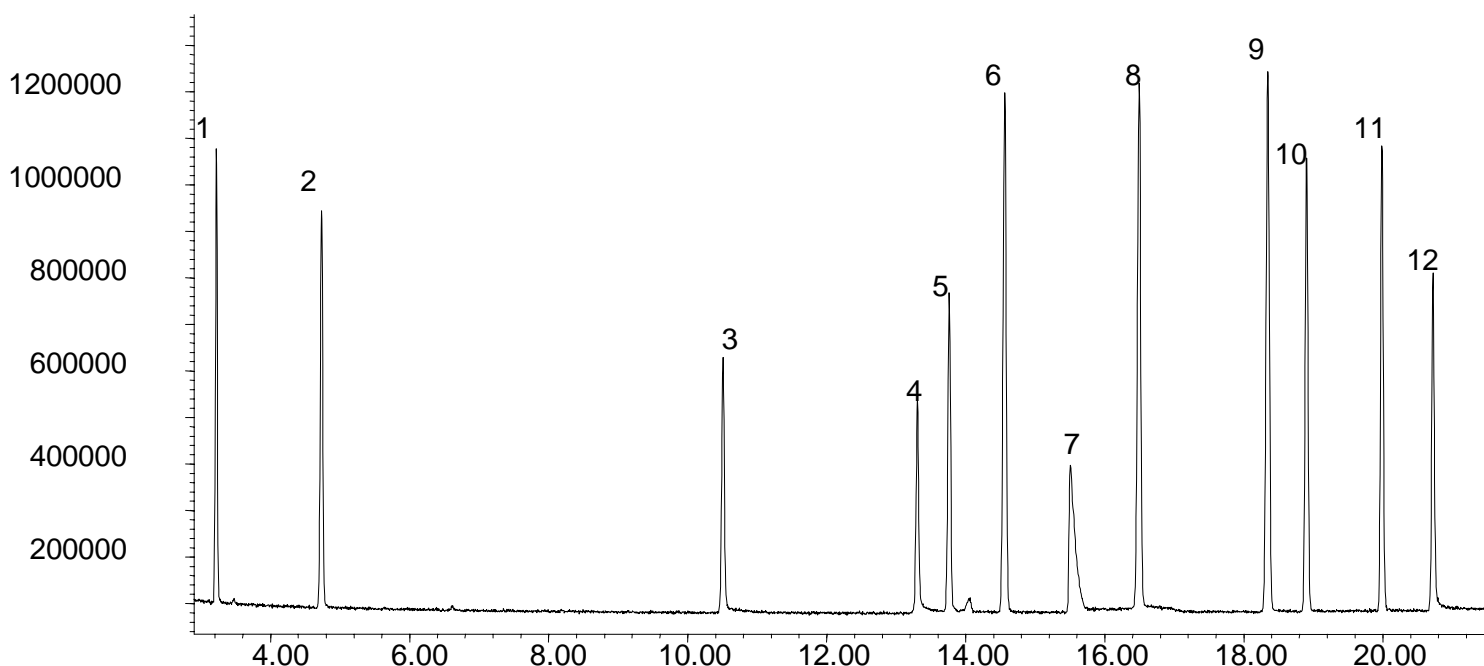
## SOL 29 SOLVENTS

## Grob Test Mix on SolGel-WAX™

**Phase:** SolGel-WAX, 0.25µm film  
**Sample:** 200ppm in dichloromethane  
**Column:** 30m x 0.25 mm ID  
**Initial Temp:** 40°C, 1 min.  
**Rate 1:** 6°C/min to 160°C,  
**Final Temp:** 160°C, 5 min.  
**Detector Type:** Mass Spectrometer  
**Carrier Gas:** He, 25.7 psi  
**Carrier Gas Flow:** 1.8 mL/min.  
**Constant Flow:** On  
**Average Linear Velocity:** 35 cm/sec at 40°C  
**Injection Mode:** Split  
**Split Ratio:** 50:1  
**Injection Volume:** 1 µL  
**Injection Temperature:** 250°C  
**Autosampler:** No  
**Liner Type:** 4 mm ID Single Taper Liner  
**Liner Part Number:** 092017  
**Column Part Number:** 054796  
**ms-NoVent™ Part no.:** 113400  
**HP5973 restrictor:** 113409  
**Full Scan / SIM:** Full scan 45-450

### Components

1. n-Decane
2. n-Undecane
3. 1-Nonanal
4. 2,3-Butanediol
5. 1-Octanol
6. Methyl decanoate
7. Dicyclohexylamine
8. Methyl undecanoate
9. Methyl dodecanoate
10. 2,6-Dimethylaniline
11. 2,6-Dimethylphenol
12. 2-Ethylhexanoic acid



visit [www.sge.com](http://www.sge.com) or contact our technical Customer Support Team on: [techsupport@sge.com](mailto:techsupport@sge.com)

SGE International Pty. Ltd.  
email: [support@sge.com](mailto:support@sge.com)

SGE, Incorporated (USA)  
email: [usa@sge.com](mailto:usa@sge.com)

SGE (Italia) Srl.  
email: [sge.italia@tin.it](mailto:sge.italia@tin.it)

SGE China Service Centre  
email: [sge@bj.col.com.cn](mailto:sge@bj.col.com.cn)

SGE India  
email: [sgeindia@vsnl.com](mailto:sgeindia@vsnl.com)

SGE Europe Ltd. (UK)  
email: [uk@sge.com](mailto:uk@sge.com)

SGE (France) Sarl  
email: [france@sge.com](mailto:france@sge.com)

SGE Deutschland GmbH  
email: [germany@sge.com](mailto:germany@sge.com)

SGE Japan Inc.  
email: [japan@sge.com](mailto:japan@sge.com)