

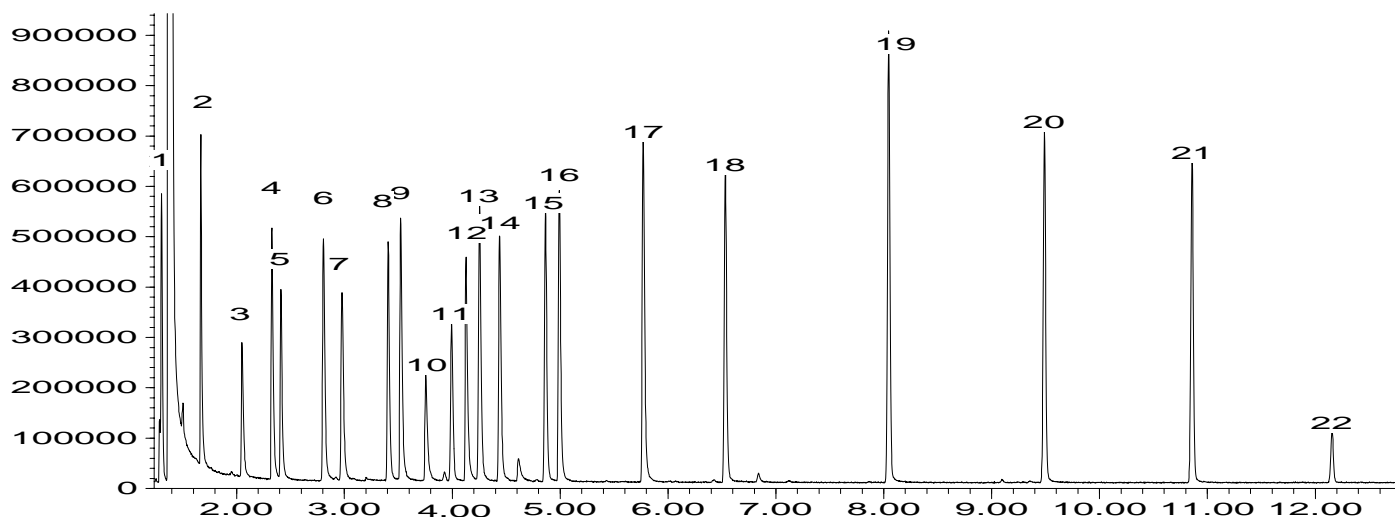
SOL 25 SOLVENTS

Analysis of 22 Ketones on BPX35

Phase: BPX35, 0.25µm film
Sample: 300ppm in dichloromethane
Column: 30m x 0.25 mm ID
Initial Temp: 40°C, 5 min.
Rate: 10°C/min to 170°C,
Final Temp: 170°C, 5 min.
Detector Type: Mass Spectrometer
Carrier Gas: He, 25.6 psi
Carrier Gas Flow: 1.6mL/min.
Constant Flow: On
Average Linear Velocity: 35 cm/sec at 40°C
Injection Mode: Split
Split Ratio: 80:1
Injection Volume: 0.5 µL
Injection Temperature: 250°C
Autosampler: No
Liner Type: 4 mm ID Single Taper Liner
Liner Part Number: 092017
Column Part Number: 054701
ms-NoVent™ Part no.: 113400
HP5973 restrictor: 113409
Full Scan / SIM: Full scan 45-450

Components

1. Acetone
2. 2-Butanone
3. 3-Methyl-2-butanone
4. 2-Pentanone
5. 3-Pentanone
6. 4-Methyl-2-pentanone
7. 3-Methyl-2-pentanone
8. 3-Hexanone
9. 2-Hexanone
10. Mesityl oxide
11. 2-Methyl-3-hexanone
12. Cyclopentanone
13. 4-Methyl-2-hexanone
14. 5-Methyl-2-hexanone
15. 3-Heptanone
16. 2-Heptanone
17. Cyclohexanone
18. 2-Octanone
19. 2-Nonanone
20. 2-Decanone
21. 2-Undecanone
22. 2-Dodecanone



visit www.sge.com or contact our technical Customer Support Team on: techsupport@sge.com

SGE International Pty. Ltd.
email: support@sge.com

SGE Incorporated (USA)
email: usa@sge.com

SGE (France) Sarl
email: france@sge.com

SGE Deutschland GmbH
email: germany@sge.com

SGE Japan Inc.
email: sgejpn@itjit.ne.jp

SGE Australia Pty. Ltd.
email: sales@sge.com

SGE Europe Ltd. (UK)
email: uk@sge.com

SGE (Italia) Srl.
email: sge.italia@tin.it

SGE China Service Centre
email: sge@bj.col.com.cn

SGE India
email: sgeindia@bom4.vsnl.net.in