

SOL 13 SOLVENTS

Analysis of a Standard Solvent Mixture on BP20

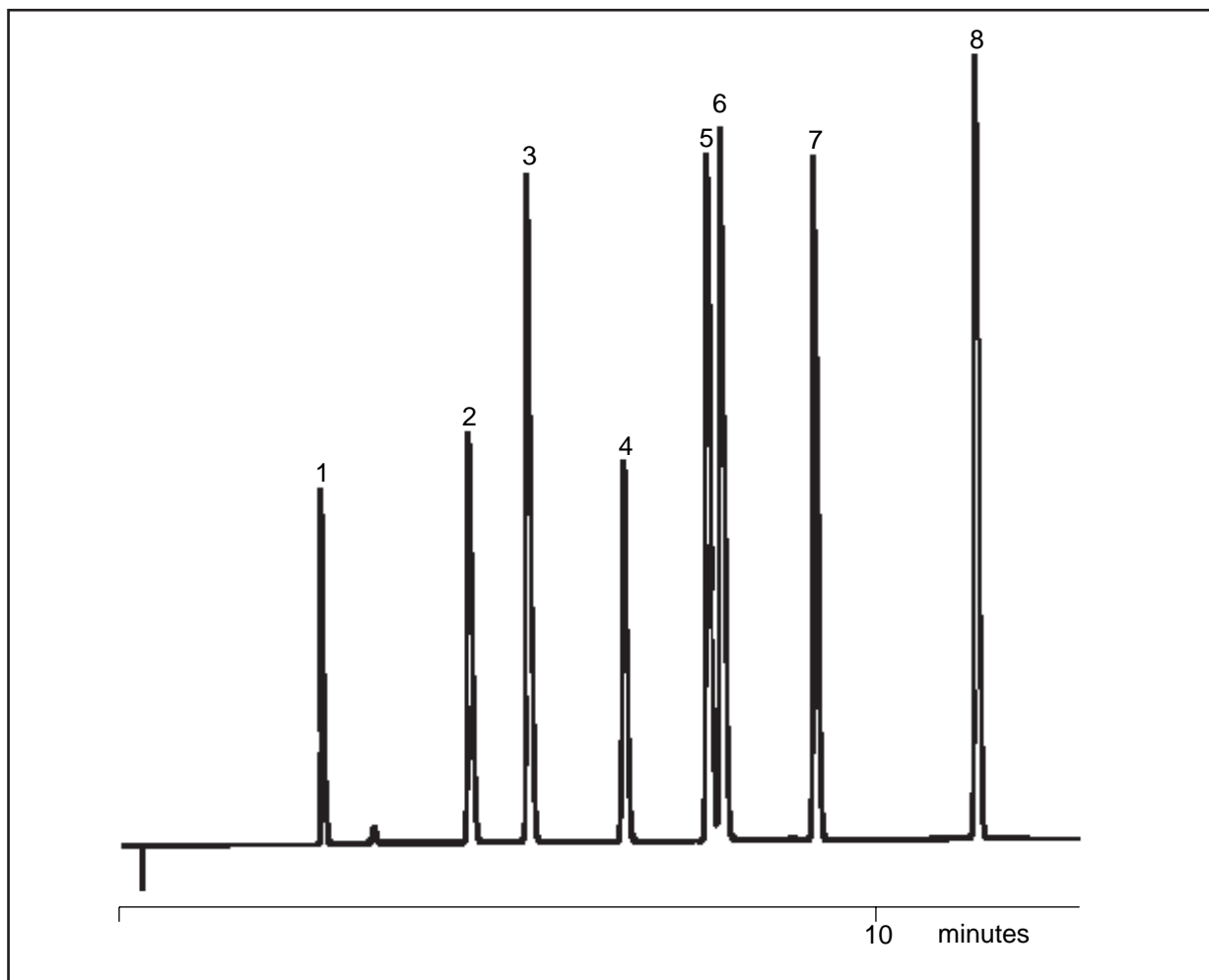
KEYWORDS:
Solvents

Xylenes

Part No.: 054442
Phase: BP20, 1.0µm
Column: 25m x 0.32mm ID
Initial Temp.: 45°C, 2min
Rate 1: 5°C/min
Final Temp.: 90°C
Detector: FID, 260°C
Injector Mode: Split, 100:1, 240°C
Carrier Gas: Hydrogen, 80kpa
Injection Volume: 0.1µL

Components

1. Ethyl Acetate
2. MIBK
3. Toluene
4. *iso*-Butanol
5. *p*-Xylene
6. *m*-Xylene
7. *o*-Xylene
8. Styrene



visit www.sge.com or contact our technical Customer Support Team on: techsupport@sge.com

SGE International Pty. Ltd.
email: support@sge.com

SGE Incorporated (USA)
email: usa@sge.com

SGE (France) Sarl
email: france@sge.com

SGE Deutschland GmbH
email: germany@sge.com

SGE Japan Inc.
email: sgejpn@itjit.ne.jp

SGE Australia Pty. Ltd.
email: sales@sge.com

SGE Europe Ltd. (UK)
email: uk@sge.com

SGE (Italia) Srl.
email: sge.italia@tin.it

SGE China Service Centre
email: sge@bj.col.com.cn

SGE India
email: sgeindia@bom4.vsnl.net.in