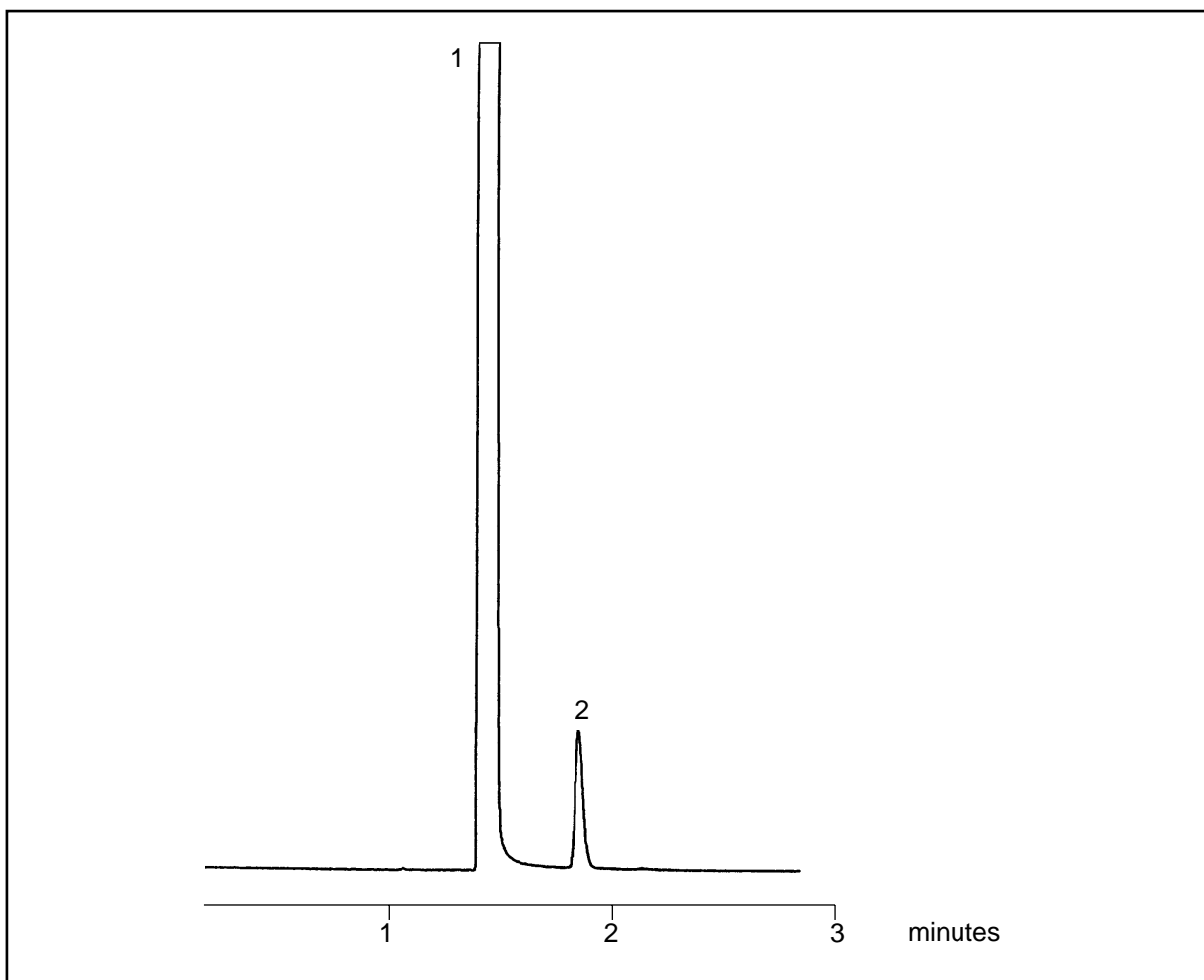


SOL 09 SOLVENTS

Ethanol Impurity in Methanol on BP1 on a 0.53mm ID Column

Part No.:	054095	Components
Phase:	BPI, 5.0µm	1. Methanol
Column:	25m x 0.53mm ID	2. Ethanol
Temp:	50°C, Isothermal	
Detector:	FID, 300°C	
Injector Mode:	Split, 20:1	
Carrier Gas:	Helium, 4psi	
Injection Volume:	1µl	



visit www.sge.com or contact our technical Customer Support Team on: techsupport@sge.com

SGE International Pty. Ltd.
email: support@sge.com

SGE Incorporated (USA)
email: usa@sge.com

SGE (France) Sarl
email: france@sge.com

SGE Deutschland GmbH
email: germany@sge.com

SGE Japan Inc.
email: sgejpn@itjit.ne.jp

SGE Australia Pty. Ltd.
email: sales@sge.com

SGE Europe Ltd. (UK)
email: uk@sge.com

SGE (Italia) Srl.
email: sge.italia@tin.it

SGE China Service Centre
email: sge@bj.col.com.cn

SGE India
email: sgeindia@bom4.vsnl.net.in