

**KEYWORDS:**

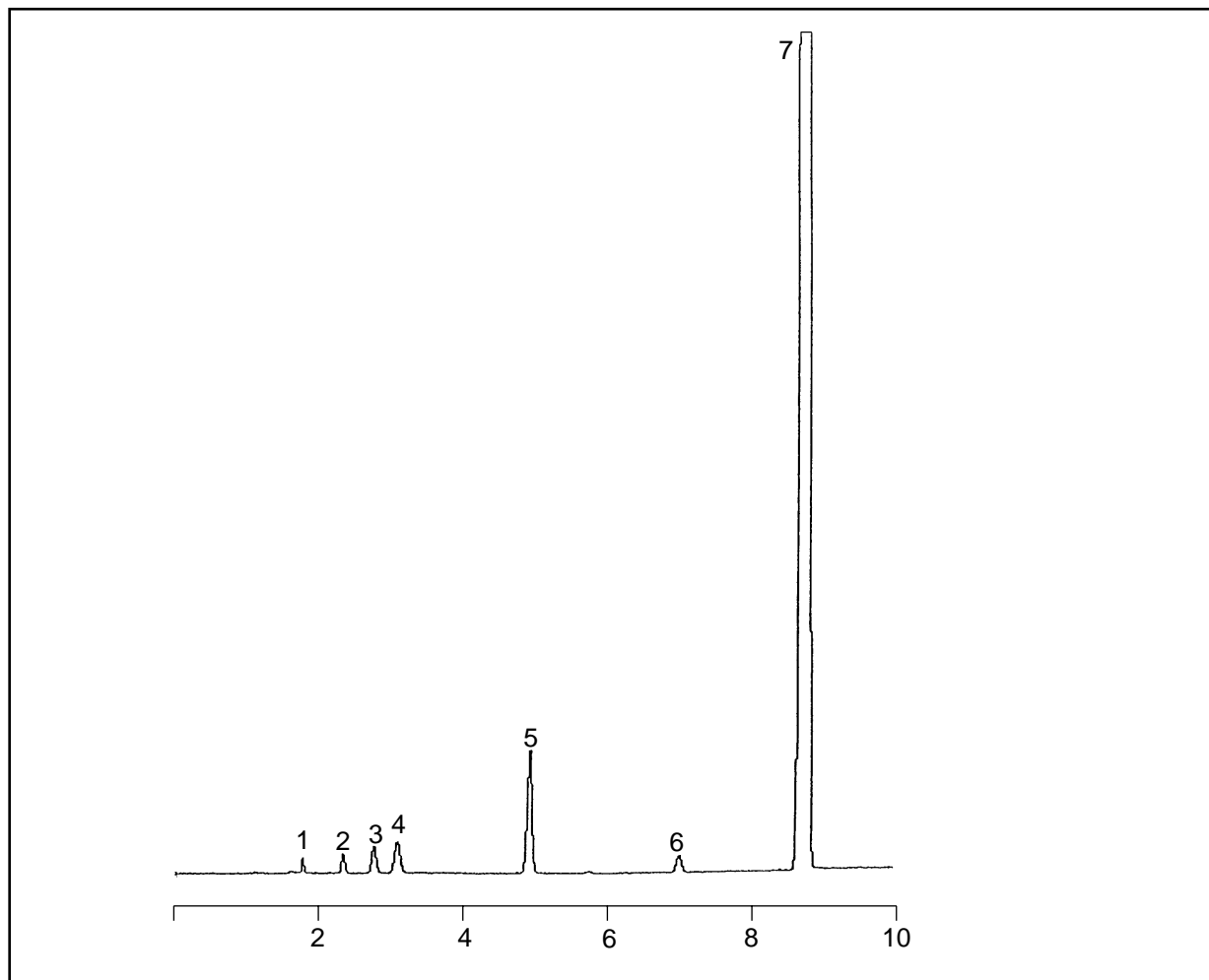
Alcohols

**Solvent Analysis on BP624**

Part No.: 054834  
Phase: BP624  
Column: 25m x 0.53mm ID  
Initial Temp.: 40°C, 2min  
Rate 1: 7°C/min  
Final Temp.: 100°C  
Detector: FID, 280°C  
Injector Mode: Split 30:1  
Carrier Gas: Helium 2.5psi  
Injection Volume: 0.5µl  
Injection Temp: 200°C

**Components**

1. Methanol
2. Ethanol
3. *iso*-Propanol
4. *t*-Butanol
5. Ethyl Propionate
6. Benzene
7. Toluene



visit [www.sge.com](http://www.sge.com) or contact our technical Customer Support Team on: [techsupport@sge.com](mailto:techsupport@sge.com)

SGE International Pty. Ltd.  
email: [support@sge.com](mailto:support@sge.com)

SGE Incorporated (USA)  
email: [usa@sge.com](mailto:usa@sge.com)

SGE (France) Sarl  
email: [france@sge.com](mailto:france@sge.com)

SGE Deutschland GmbH  
email: [germany@sge.com](mailto:germany@sge.com)

SGE Japan Inc.  
email: [sgejpn@itjit.ne.jp](mailto:sgejpn@itjit.ne.jp)

SGE Australia Pty. Ltd.  
email: [sales@sge.com](mailto:sales@sge.com)

SGE Europe Ltd. (UK)  
email: [uk@sge.com](mailto:uk@sge.com)

SGE (Italia) Srl.  
email: [sge.italia@tin.it](mailto:sge.italia@tin.it)

SGE China Service Centre  
email: [sge@bj.col.com.cn](mailto:sge@bj.col.com.cn)

SGE India  
email: [sgeindia@bom4.vsnl.net.in](mailto:sgeindia@bom4.vsnl.net.in)