

SOL 04
SOLVENTS

Acrylic Acid/Acrylamide Analysis on BP21

KEYWORDS:

Acrylic Acids

Acrylamide

Notes: When response of acrylic acid does occur, removal of 30cm from the front of the column will correct this loss.

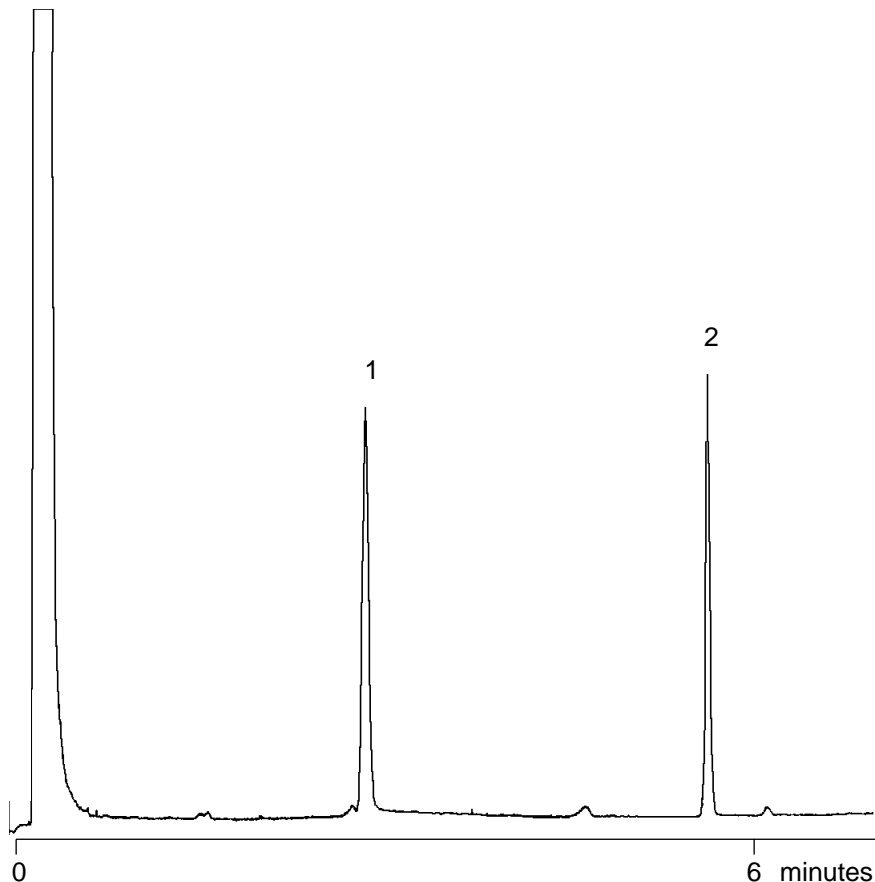
On-column injection is recommended or polymerisation of acrylic acid may occur.

ACRYLIC ACID/ACRYLAMIDE ANALYSIS

Part No.: 054473
Phase: BP21, 0.5µm film
Column: 12m x 0.53mm ID
Initial Temp: 75°C, 0.5min
Rate: 10°C/min
Final Temp: 150°C
Detector: FID, 280°C
Injection Mode: On-Column
Carrier Gas: He, 6psi

Components

1. Acrylic acid (25ng)
2. Acrylamide (10ng)



visit www.sge.com or contact our technical Customer Support Team on: techsupport@sge.com

SGE International Pty. Ltd.
email: support@sge.com

SGE Incorporated (USA)
email: usa@sge.com

SGE (France) Sarl
email: france@sge.com

SGE Deutschland GmbH
email: germany@sge.com

SGE Japan Inc.
email: sgejpn@itjit.ne.jp

SGE Australia Pty. Ltd.
email: sales@sge.com

SGE Europe Ltd. (UK)
email: uk@sge.com

SGE (Italia) Srl.
email: sge.italia@tin.it

SGE China Service Centre
email: sge@bj.col.com.cn

SGE India
email: sgeindia@bom4.vsnl.net.in