

## SOL 01 SOLVENTS

# Solvent Analysis on a 0.53mm ID BP624

### KEYWORDS:

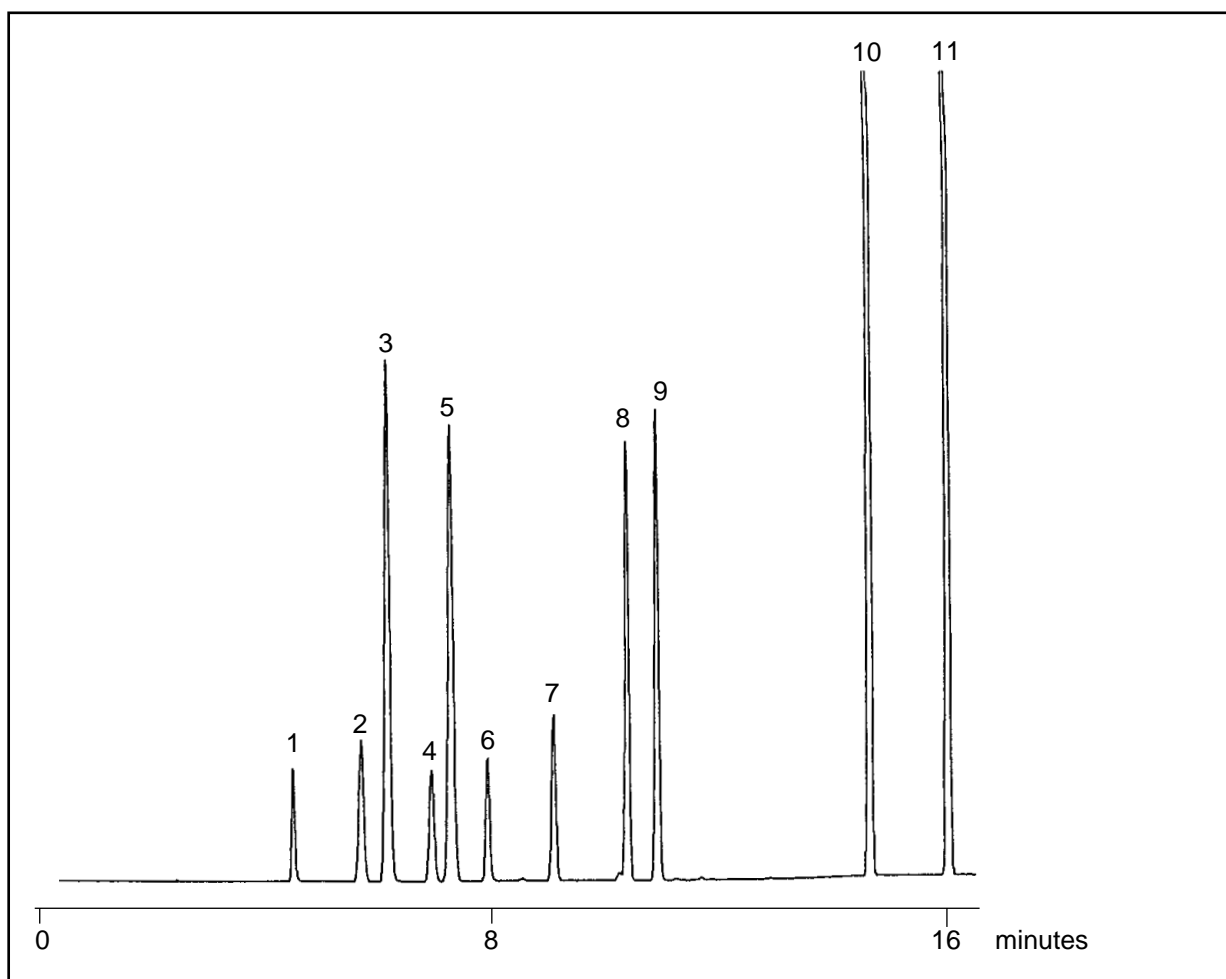
Solvents

### SOLVENT ANALYSIS

Part No.: 054835  
Phase: BP624, 3.0 $\mu$ m  
Column: 50m x 0.53mm ID  
Initial Temp: 35°C, 6min  
Rate: 15°C/min  
Final Temp: 160°C, 2min  
Detector: FID 280°C  
Injection Mode: Split (30:1)  
Carrier Gas: He, 4psi

### Components

1. Methanol
2. Ethanol
3. Pentane
4. Acetone
5. *iso*-Propanol
6. Dichloromethane
7. Hexane
8. Ethyl Acetate
9. THF
10. Pyridine
11. 2-Picoline



visit [www.sge.com](http://www.sge.com) or contact our technical Customer Support Team on: [techsupport@sge.com](mailto:techsupport@sge.com)

SGE International Pty. Ltd.  
email: [support@sge.com](mailto:support@sge.com)

SGE Incorporated (USA)  
email: [usa@sge.com](mailto:usa@sge.com)

SGE (France) Sarl  
email: [france@sge.com](mailto:france@sge.com)

SGE Deutschland GmbH  
email: [germany@sge.com](mailto:germany@sge.com)

SGE Japan Inc.  
email: [sgejpn@itjit.ne.jp](mailto:sgejpn@itjit.ne.jp)

SGE Australia Pty. Ltd.  
email: [sales@sge.com](mailto:sales@sge.com)

SGE Europe Ltd. (UK)  
email: [uk@sge.com](mailto:uk@sge.com)

SGE (Italia) Srl.  
email: [sge.italia@tin.it](mailto:sge.italia@tin.it)

SGE China Service Centre  
email: [sge@bj.col.com.cn](mailto:sge@bj.col.com.cn)

SGE India  
email: [sgeindia@bom4.vsnl.net.in](mailto:sgeindia@bom4.vsnl.net.in)