

## Analysis of Unreacted Monomers in Latex on BP20

**KEYWORDS:**

- Latex
- Monomers
- Methacrylates
- Acrylates

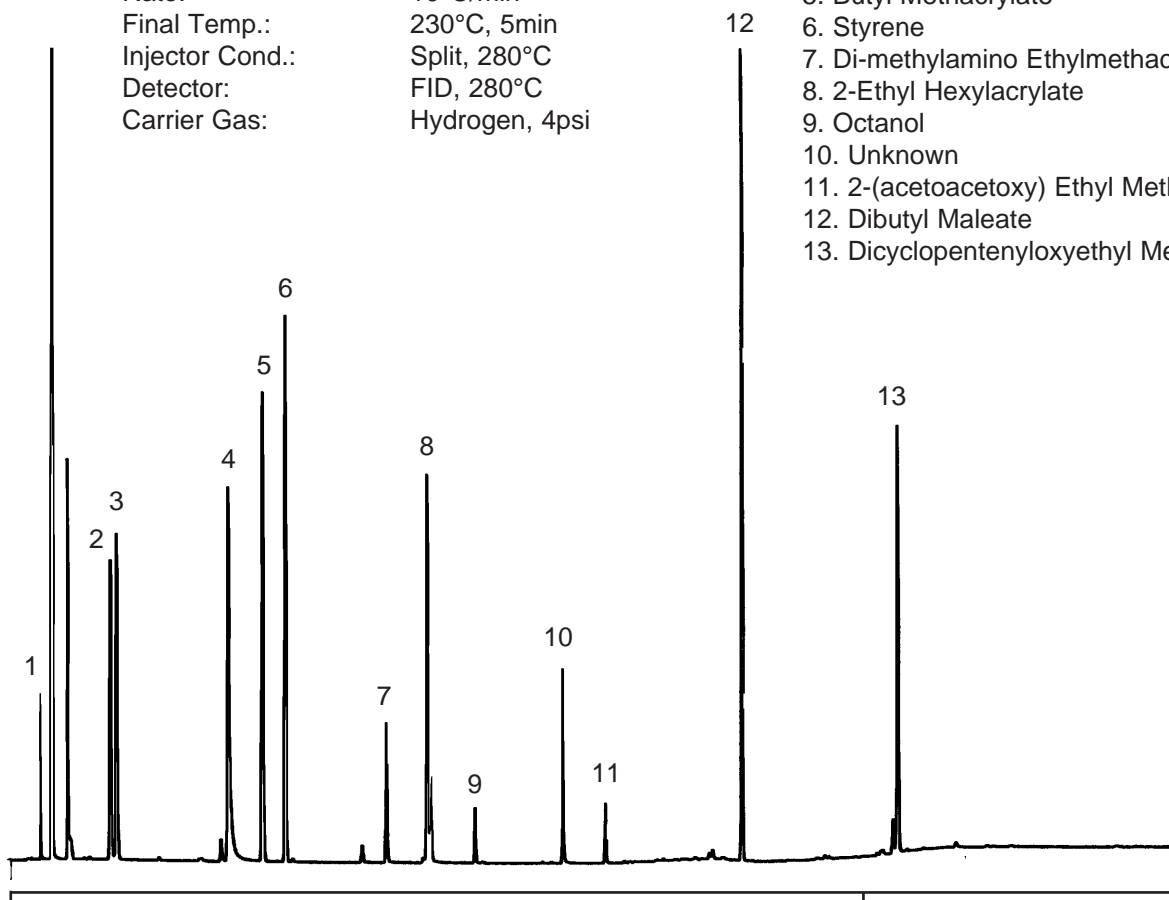
Note: This was performed by heated headspace analysis

**Column and Oven conditions**

Part No.: 054448  
Phase: BP20, 1.0µm  
Column: 25m x 0.53mm ID  
Initial Temp.: 40°C, 2min  
Rate: 10°C/min  
Final Temp.: 230°C, 5min  
Injector Cond.: Split, 280°C  
Detector: FID, 280°C  
Carrier Gas: Hydrogen, 4psi

**Components**

1. Vinyl Acetate
2. Ethyl Acrylate
3. Monomethyl Methacrylate
4. Butyl Acrylate
5. Butyl Methacrylate
6. Styrene
7. Di-methylamino Ethylmethacrylate
8. 2-Ethyl Hexylacrylate
9. Octanol
10. Unknown
11. 2-(acetoacetoxy) Ethyl Methacrylate
12. Dibutyl Maleate
13. Dicyclopentenloxyethyl Methacrylate



visit [www.sge.com](http://www.sge.com) or contact our technical Customer Support Team on: [techsupport@sge.com](mailto:techsupport@sge.com)

SGE International Pty. Ltd.  
email: support@sge.com

SGE, Incorporated (USA)  
email: usa@sge.com

SGE (Italia) Srl.  
email: sge.italia@tin.it

SGE China Service Centre  
email: sge@bj.col.com.cn

SGE India  
email: sgeindia@vsnl.com

SGE Europe Ltd. (UK)  
email: uk@sge.com

SGE (France) Sarl  
email: france@sge.com

SGE Deutschland GmbH  
email: germany@sge.com

SGE Japan Inc.  
email: japan@sge.com