

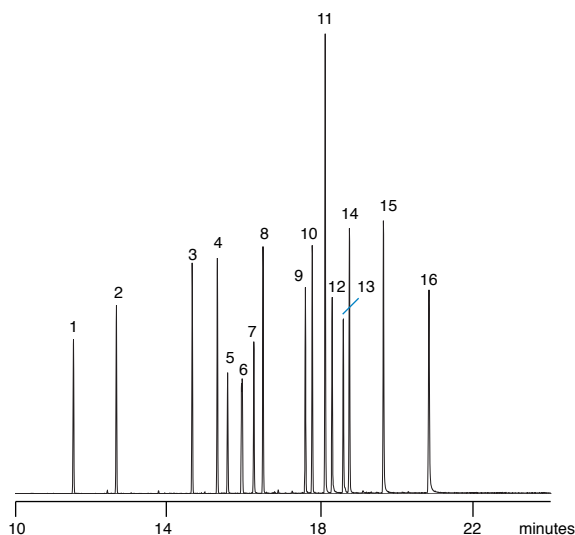
PHT 05 PHTHALATES

Analysis of Endocrine Disruptor Phthalate Esters On BPX5

Sample Description: 8061 Phthalate esters mix 250mg/L,
<1ng per component on column

BPX5 column

Phase: BPX5, 0.25 μ m film
Column: 30m x 0.25mm ID
Column Part No. 054101



Sample Introduction:

Split / Splitless
Injector Temp: 240°C
Injection Volume: 0.5 μ L
Autosampler Syringe: 5 μ L Fixed Needle
Septa: Auto-Sep T™
Injection Type: Split
Purge On Time: NA
Purge On (Spilt) Vent: 89.8mL/min
Split Ratio: 150 to 1
Liner Type: Single taper

Oven Parameters:

Initial Temp: 40°C
Initial Time: 1min
Rate 1: 15°C/min
Final Temp 1: 310°C
Hold Time: 5min
Run Time: 24.00min

Detector Parameters:

Detector Type: MSD. Interface 280°C,
Source 230°C,
Quad 150°C

Pressure/Flow Values:

Carrier Gas: Helium
Constant Flow: On
Pressure: 2.22psi
Column Flow: 0.6mL/min
Linear Velocity: 28cm/sec @ 40°C

- | | |
|------------------------------------|----------------------------------|
| 1. Dimethyl phthalate | 9. Dihexyl phthalate |
| 2. Diethyl phthalate | 10. Butylbenzyl phthalate |
| 3. Diisobutyl phthalate | 11. Hexyl-2-ethylhexyl phthalate |
| 4. Di-n-butyl phthalate | 12. bis(2-Ethylhexyl)phthalate |
| 5. bis(2-Methoxyethyl)phthalate | 13. Dicyclohexyl phthalate |
| 6. bis(4-Methyl-2-pentyl)phthalate | 14. bis(2-Ethylhexyl)phthalate |
| 7. bis(2-Ethoxyethyl)phthalate | 15. Di-n-octyl phthalate |
| 8. Diamyl phthalate | 16. Di-n-nonyl phthalate |

visit www.sge.com or contact our technical Customer Support Team on: techsupport@sge.com

SGE International Pty. Ltd.
email: support@sge.com

SGE Incorporated (USA)
email: usa@sge.com

SGE (France) Sarl
email: france@sge.com

SGE Deutschland GmbH
email: germany@sge.com

SGE Japan Inc.
email: sgejpn@itjit.ne.jp

SGE Australia Pty. Ltd.
email: sales@sge.com

SGE Europe Ltd. (UK)
email: uk@sge.com

SGE (Italia) Srl.
email: sge.italia@tin.it

SGE China Service Centre
email: sge@bj.col.com.cn

SGE India
email: sgeindia@bom4.vsnl.net.in