

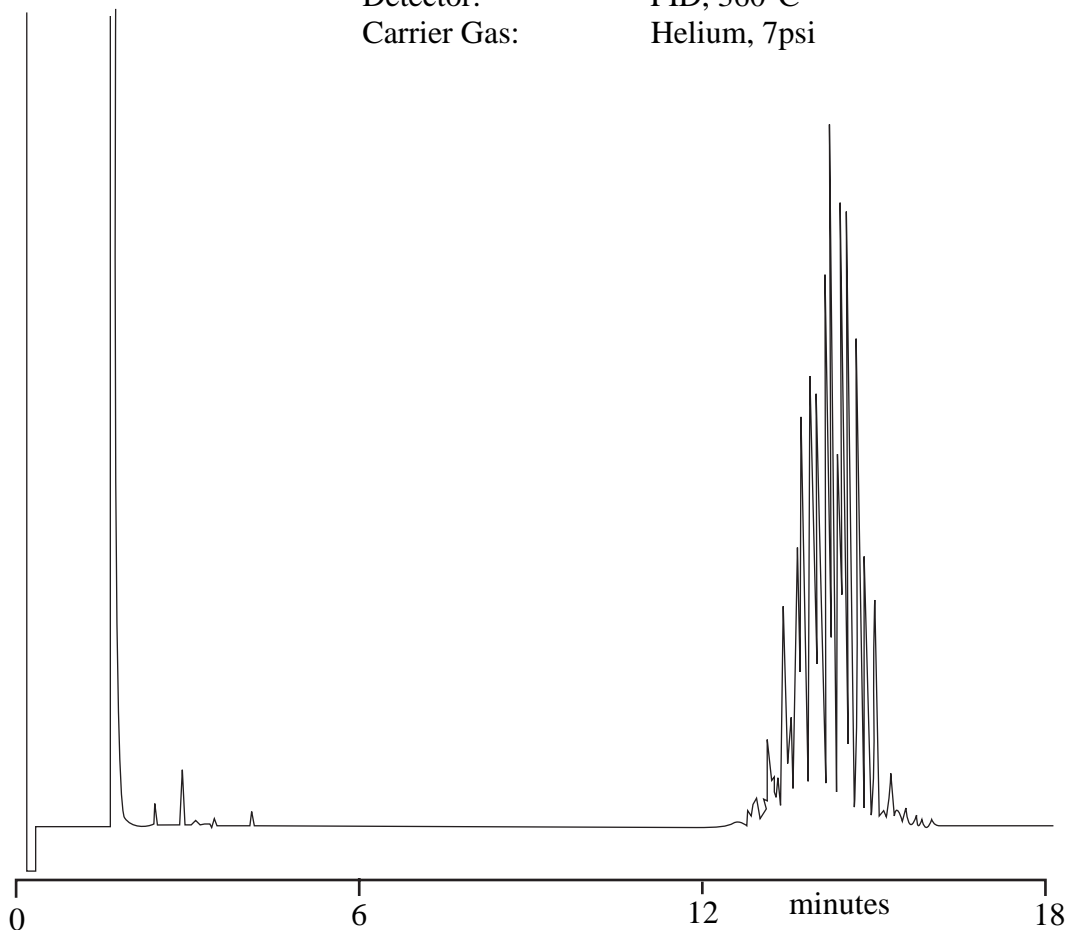
PHT 04
PHthalATES

Analysis of Dinonyl Phthalates on BPX5

Keywords

Phthalates
Dinonyl

Part No.: 054119
Phase: BPX5, 0.25 μ m film
Column: 25 m x 0.32 mm ID
Initial Temp: 100°C,
Rate 1: 20°C/min
Temp 2: 260°C
Rate 2: 5°C/min.
Final Temp: 340°C,
Injector Temp: 280°C
Injector Mode: Split (50:1)
Detector: FID, 360°C
Carrier Gas: Helium, 7psi



visit www.sge.com or contact our technical Customer Support Team on: techsupport@sge.com

SGE International Pty. Ltd.
email: support@sge.com

SGE Incorporated (USA)
email: usa@sge.com

SGE (France) Sarl
email: france@sge.com

SGE Deutschland GmbH
email: germany@sge.com

SGE Japan Inc.
email: sgejpn@itjit.ne.jp

SGE Australia Pty. Ltd.
email: sales@sge.com

SGE Europe Ltd. (UK)
email: uk@sge.com

SGE (Italia) Srl.
email: sge.italia@tin.it

SGE China Service Centre
email: sge@bj.col.com.cn

SGE India
email: sgeindia@bom4.vsnl.net.in