

PHT 03
PHthalATES

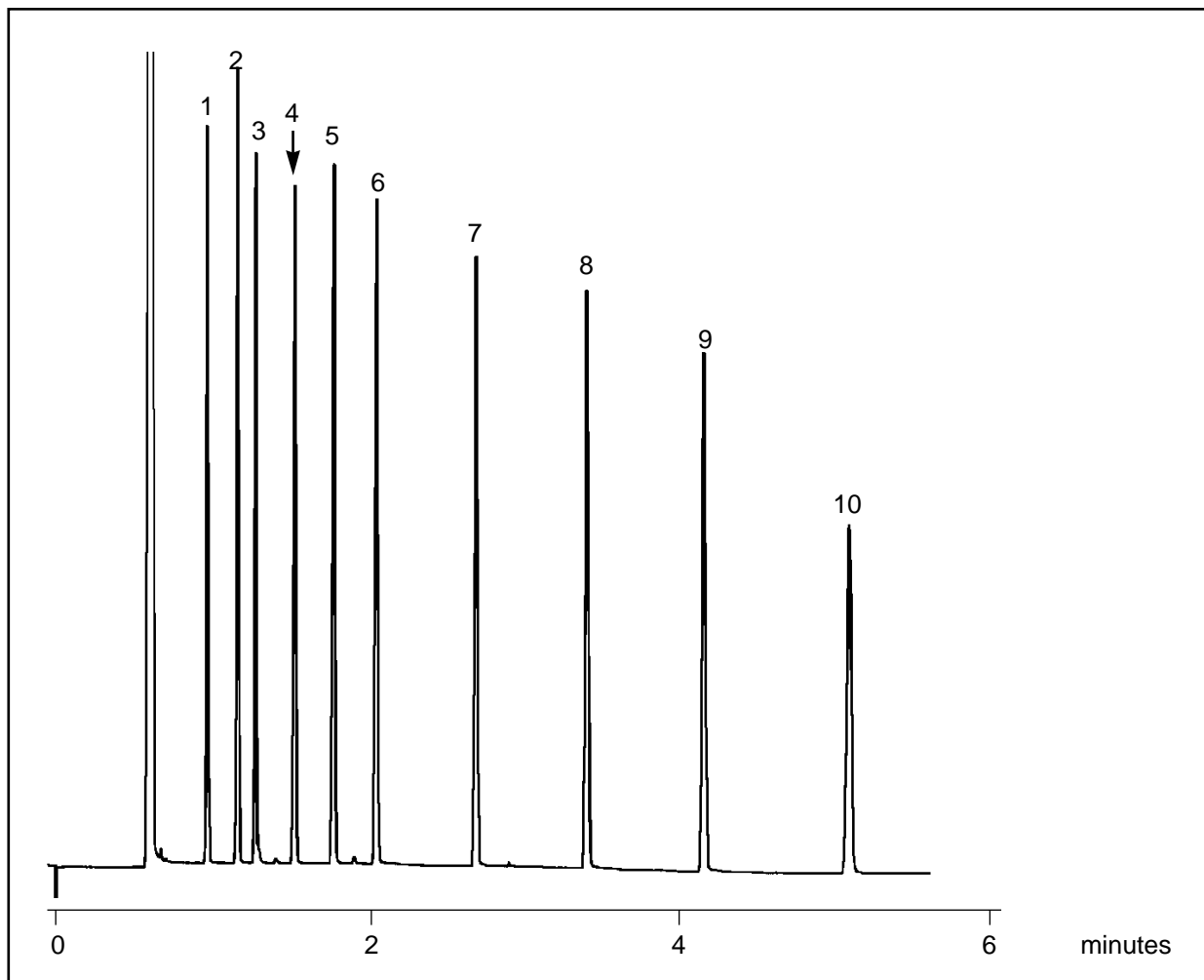
Analysis of Phthalate Esters on BP1

PHthalATE ESTERS

Part No.: 054046
 Phase: BP1, 0.25µm film
 Column: 12m x 0.22mm ID
 Initial Temp: 200°C, 0min
 Rate: 20°C/min
 Final Temp: 280°C, 0 min
 Detector: FID
 Sensitivity: 128 x 10⁻¹² AFS
 Injection Mode: Split

Components

1. Dimethyl Phthalate
2. Diethyl Phthalate
3. Di-iso-Propyl Phthalate
4. Di-n-Propyl Phthalate
5. Di-iso-Butyl Phthalate
6. Di-n-Butyl Phthalate
7. Di-n-Pentyl Phthalate
8. Dihexyl Phthalate
9. Diheptyl Phthalate
10. Dioctyl Phthalate



visit www.sge.com or contact our technical Customer Support Team on: techsupport@sge.com

SGE International Pty. Ltd.
email: support@sge.com

SGE Incorporated (USA)
email: usa@sge.com

SGE (France) Sarl
email: france@sge.com

SGE Deutschland GmbH
email: germany@sge.com

SGE Japan Inc.
email: sgejpn@itjit.ne.jp

SGE Australia Pty. Ltd.
email: sales@sge.com

SGE Europe Ltd. (UK)
email: uk@sge.com

SGE (Italia) Srl.
email: sge.italia@tin.it

SGE China Service Centre
email: sge@bj.col.com.cn

SGE India
email: sgeindia@bom4.vsnl.net.in