

PHT 01 PHTHALATES

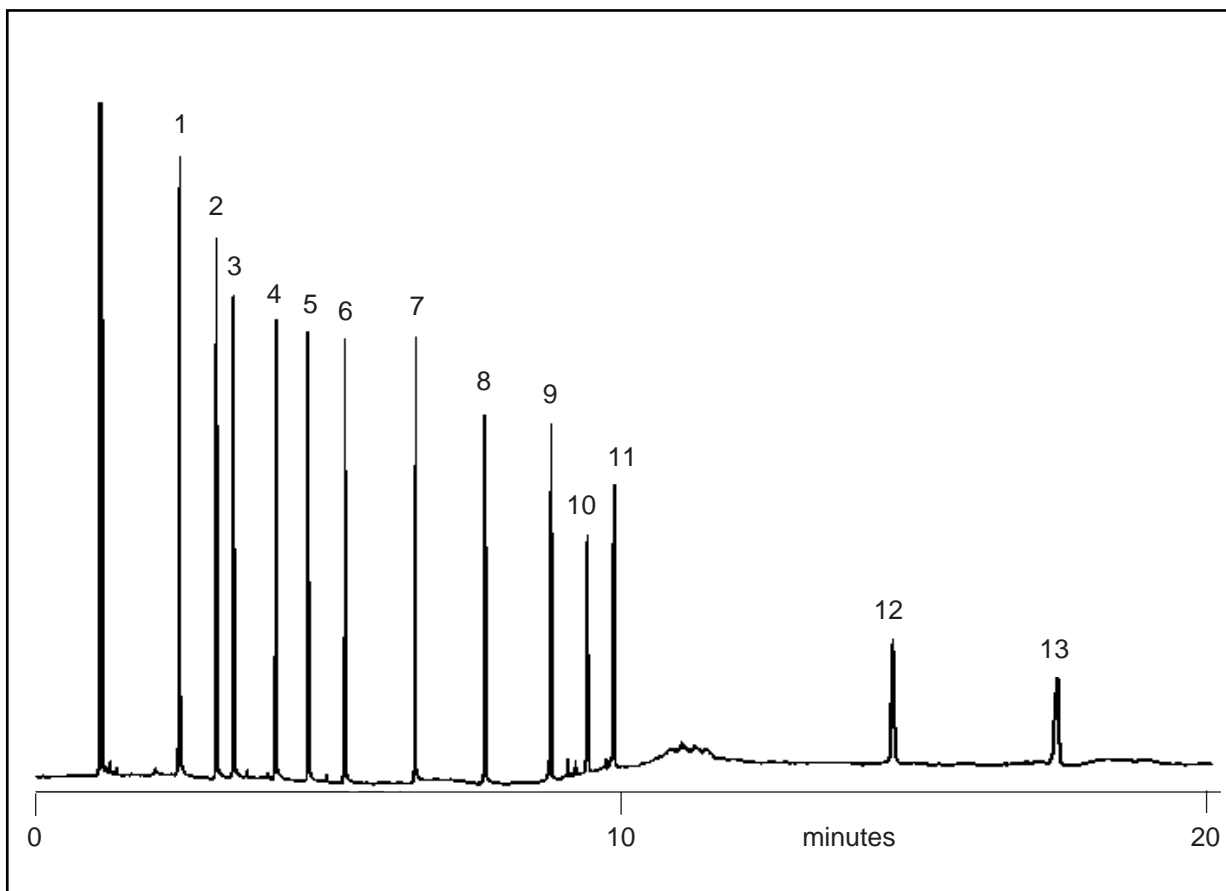
Analysis of Phthalate Esters on BPX5

PHTHALATE ESTERS

Part No.: 054125
 Phase: BPX5, 0.5µm film
 Column: 25m x 0.32mm ID
 Initial Temp: 180°C, 0min
 Rate: 15°C/min
 Final Temp: 350°C, 5min
 Carrier Gas: H₂, 6psi
 Detector: FID
 Sensitivity: 140 x 10⁻¹² AFS
 Injection Mode: Split

Components

1. Dimethyl Phthalate
2. Diethyl Phthalate
3. Diisopropyl Phthalate
4. Dipropyl Phthalate
5. Diisobutyl Phthalate
6. Dibutyl Glutarate
7. Dipentyl Phthalate
8. Dihexyl Phthalate
9. Diheptyl Phthalate
10. Branched Dinonyll Phthalate
11. Dioctyl Phthalate
12. Diundecyl Phthalate
13. Didodecyl Phthalate



visit www.sge.com or contact our technical Customer Support Team on: techsupport@sge.com

SGE International Pty. Ltd.
email: support@sge.com

SGE Incorporated (USA)
email: usa@sge.com

SGE (France) Sarl
email: france@sge.com

SGE Deutschland GmbH
email: germany@sge.com

SGE Japan Inc.
email: sgejpn@itjit.ne.jp

SGE Australia Pty. Ltd.
email: sales@sge.com

SGE Europe Ltd. (UK)
email: uk@sge.com

SGE (Italia) Srl.
email: sge.italia@tin.it

SGE China Service Centre
email: sge@bj.col.com.cn

SGE India
email: sgeindia@bom4.vsnl.net.in