

PHA 19

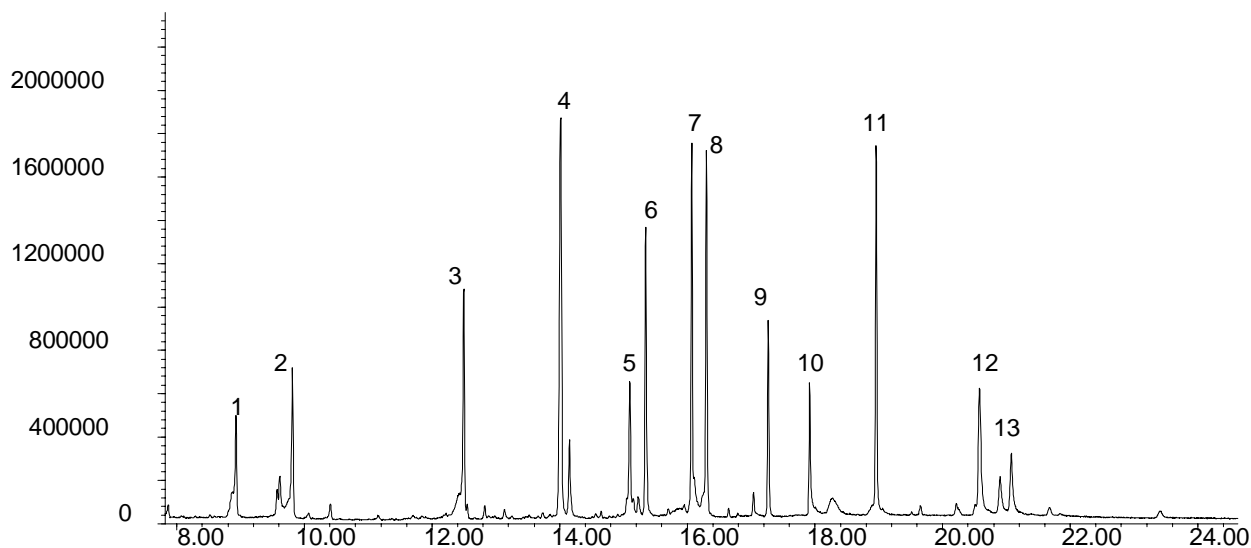
PHARMACEUTICALS

Analysis of a Variety of Antidepressant and Anticonvulsant Drugs on BPX50

Phase: BPX50, 0.25µm film
Sample: 5-10ppm in methanol
Column: 30m-x 0.25 mm ID
Initial Temp: 150°C, 0.5 min.
Rate 1: 10°C/min to 180°C,
Rate 2: 1.5°C/min to 220°C
Rate 2: 30°C/min to 260°C
Final Temp: 260°C, 5 min.
Detector Type: FID
Detector Temp.: 320°C
Carrier Gas: He, 25.7 psi
Carrier Gas Flow: 1.8 mL/min.
Constant Flow: On
Average Linear Velocity: 35 cm/sec at 40°C
Injection Mode: Splitless
Purge on Time: 0.5 min
Purge on (Split)Vent Flow: 60mL/min
Injection Volume: 1 µL
Injection Temperature: 250°C
Autosampler: No
Liner Type: 4 mm ID Single Taper Liner
Liner Part Number: 092017
Column Part Number: 054751
ms-NoVent™ Part no.: 113400
HP5973 restrictor: 113409
Full Scan / SIM: Full scan 45-450

Components.

1. Benzothiazole
2. Selegeline
3. Methsuximide
4. Ketamine
5. Unknown
6. Brompheniramine
7. Imipramine
8. Mianserin
9. Diothiepin
10. Carbamazepine
11. Prazepam
12. Diltiazem
13. Pholcodine



visit www.sge.com or contact our technical Customer Support Team on: techsupport@sge.com

SGE International Pty. Ltd.
email:support@sge.com

SGE Incorporated (USA)
email:usa@sge.com

SGE (France) Sarl
email:france@sge.com

SGE Deutschland GmbH
email:germany@sge.com

SGE Japan Inc.
email:sgejpn@itjit.ne.jp

SGE Australia Pty. Ltd.
email:sales@sge.com

SGE Europe Ltd. (UK)
email:uk@sge.com

SGE (Italia) Srl.
email:sge.italia@tin.it

SGE China Service Centre
email:sge@bj.col.com.cn

SGE India
email:sgeindia@bom4.vsnl.net.in