

PHA 18

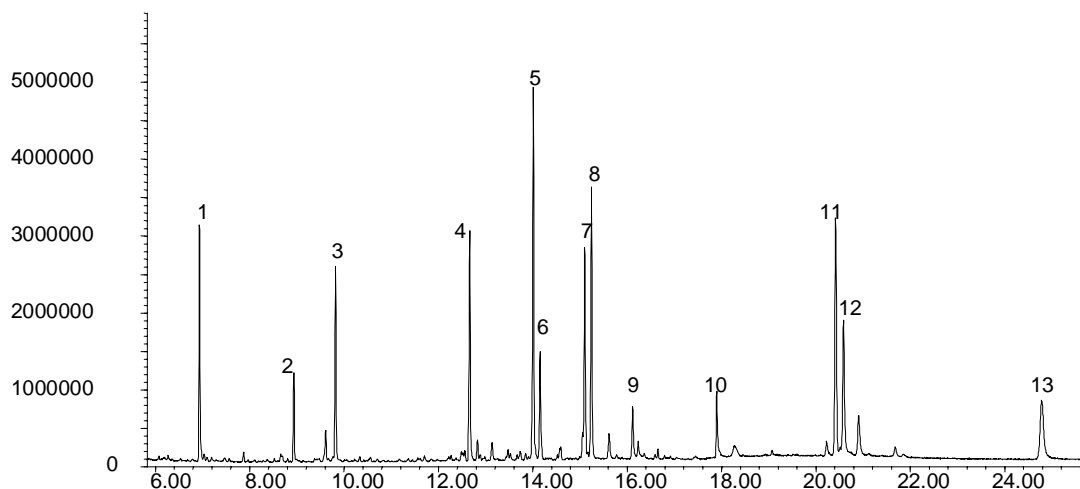
PHARMACEUTICALS

Analysis of Various Drugs on BPX50

Phase: BPX50, 0.25µm film
Sample: 5-10ppm in methanol
Column: 30m x 0.25 mm ID
Initial Temp: 150°C, 0.5 min.
Rate 1: 10°C/min to 180°C,
Rate 2: 1.5°C/min to 220°C
Rate 2: 30°C/min to 260°C
Final Temp: 260°C, 5 min.
Detector Type: FID
Detector Temp.: 320°C
Carrier Gas: He, 25.7 psi
Carrier Gas Flow: 1.8 mL/min.
Constant Flow: On
Average Linear Velocity: 35 cm/sec at 40°C
Injection Mode: Splitless
Purge on Time: 0.5 min
Purge on (Split)Vent Flow: 60mL/min
Injection Volume: 1 µL
Injection Temperature: 250°C
Autosampler: No
Liner Type: 4 mm ID Single Taper Liner
Liner Part Number: 092017
Column Part Number: 054751
ms-NoVent™ Part no.: 113400
HP5973 restrictor: 113409
Full Scan / SIM: Full scan 45-450

Components.

1. *N,N*-Dimethylaniline
2. Benzothiazole
3. Selegeline
4. Pethidine
5. Unknown
6. -octadecene
7. Octadecanoic acid butyl ester
8. Methadone
9. *N,N*-Dimethylstearamide
10. Chloroquine
11. Dextromoramide
12. Sitosterol
13. Buspirone



visit www.sge.com or contact our technical Customer Support Team on: techsupport@sge.com

SGE International Pty. Ltd.
email:support@sge.com

SGE Incorporated (USA)
email:usa@sge.com

SGE (France) Sarl
email:france@sge.com

SGE Deutschland GmbH
email:germany@sge.com

SGE Japan Inc.
email:sgejpn@itjit.ne.jp

SGE Australia Pty. Ltd.
email:sales@sge.com

SGE Europe Ltd. (UK)
email:uk@sge.com

SGE (Italia) Srl.
email:sge.italia@tin.it

SGE China Service Centre
email:sge@bj.col.com.cn

SGE India
email:sgeindia@bom4.vsnl.net.in