

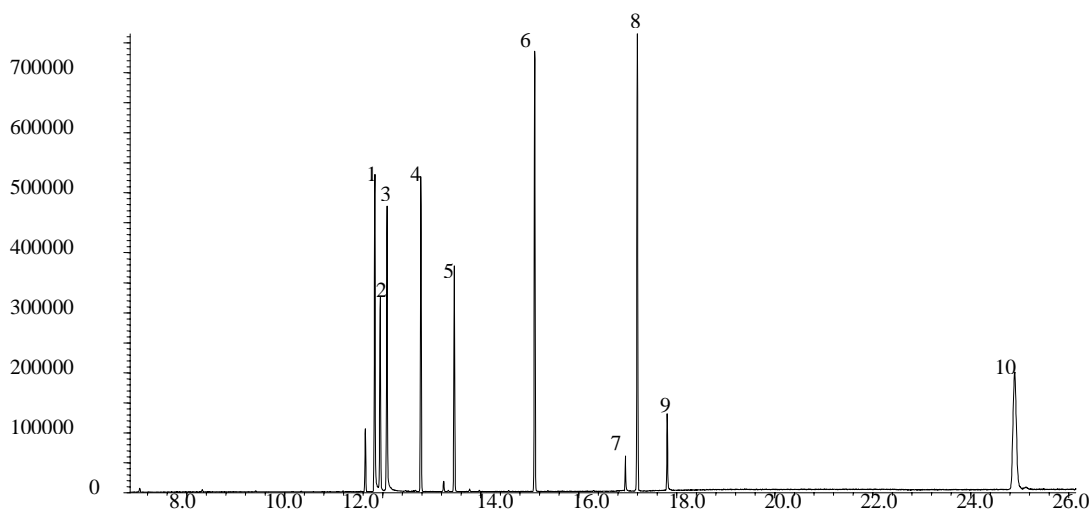
PHA 17

PHARMACEUTICAL

Analysis of Horse Racing Test Mix on BPX35

Phase:	BPX35 0.25µm film	Component
Horse Racing standard*:	10ppm in methanol	1. Amylobarbitone
Column:	30m x 0.25 mm ID	2. Metronidazole
Initial Temp:	75°C, 2 min.	3. Pentobarbitone
Rate 1:	15°C/min to 300°C,	4. Diphenhydramine
Rate 2:	20°C/min to 320°C	5. Caffeine
Final Temp:	320°C, 8 min.	6. Trimipramine
Detector Type:	MSD	7. Phenytoin
Carrier Gas:	He, 14.5 psi	8. Diazepam
Carrier Gas Flow:	1.5 mL/min.	9. Nordiazepam
Constant Flow:	On	10. Diphenoxylate
Average Linear Velocity:	45 cm/sec at 75°C	
Injection Mode:	Splitless	
Purge on Time:	0.5 min.	
Purge on (Split) Vent Flow:	60mL/min.	
Injection Volume:	1 µL	
Injection Temperature:	250°C	
Autosampler:	No	
Liner Type:	4 mm ID Double Taper Liner	
Liner Part Number:	092018	
Column Part Number:	054701	

*Sample supplied by Racing Analytical Services Ltd.



visit www.sge.com or contact our technical Customer Support Team on: techsupport@sge.com

SGE International Pty. Ltd.
email: support@sge.com

SGE Incorporated (USA)
email: usa@sge.com

SGE (France) Sarl
email: france@sge.com

SGE Deutschland GmbH
email: germany@sge.com

SGE Japan Inc.
email: sgejpn@itjit.ne.jp

SGE Australia Pty. Ltd.
email: sales@sge.com

SGE Europe Ltd. (UK)
email: uk@sge.com

SGE (Italia) Srl.
email: sge.italia@tin.it

SGE China Service Centre
email: sge@bj.col.com.cn

SGE India
email: sgeindia@bom4.vsnl.net.in