

**PHA 16**

**PHARMACEUTICALS**

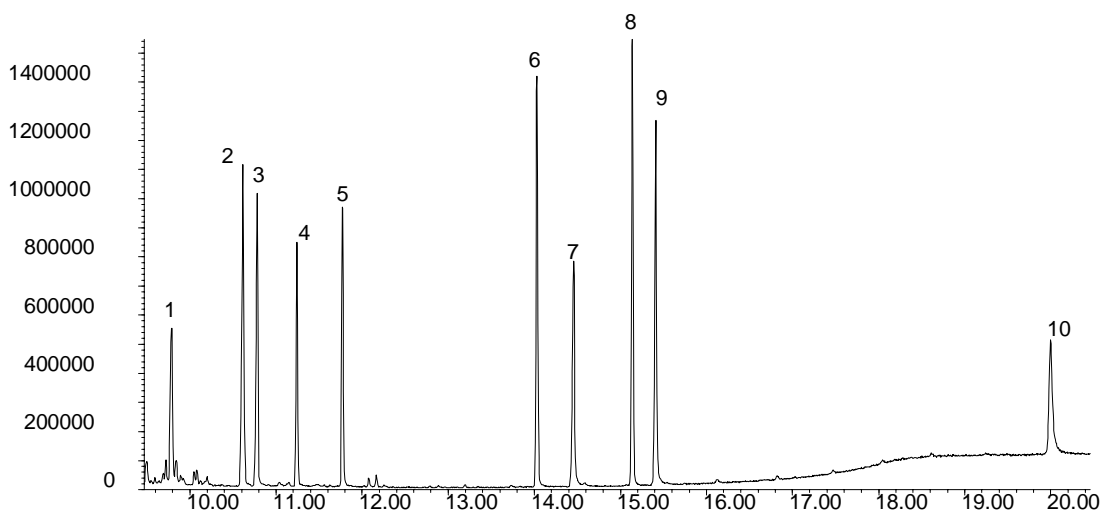
## Analysis of Horse Racing Test Mix on SolGel-1ms<sup>TM</sup>

### Component

**Phase:** SolGel-1ms 0.25 $\mu$ m film  
**Horse Racing standard\*:** 10ppm in methanol  
**Column:** 30m x 0.25 mm ID  
**Initial Temp:** 75°C, 2 min.  
**Rate 1:** 15°C/min to 300°C,  
**Rate 2:** 20°C/min to 320°C  
**Final Temp:** 320°C, 8 min.  
**Detector Type:** Mass Spectrometer  
**Carrier Gas:** He, 28.7 psi  
**Carrier Gas Flow:** 1.7 mL/min.  
**Constant Flow:** On  
**Average Linear Velocity:** 35 cm/sec at 75°C  
**Injection Mode:** Splitless  
**Purge on Time:** 0.5 min.  
**Purge on (Split) Vent Flow:** 60mL/min.  
**Injection Volume:** 1  $\mu$ L  
**Injection Temperature:** 250°C  
**Autosampler:** No  
**Liner Type:** 4 mm ID Single Taper Liner  
**Liner Part Number:** 092017  
**Column Part Number:** 054795

1. Metronidazole
2. Amylobarbitone
3. Pentobarbitone
4. Caffeine
5. Diphenhydramine
6. Trimipramine
7. Phenytoin
8. Diazepam
9. Nordiazepam
10. Diphenoxylate

\*Sample supplied by Racing Analytical Services Ltd.



visit [www.sge.com](http://www.sge.com) or contact our technical Customer Support Team on: [techsupport@sge.com](mailto:techsupport@sge.com)

SGE International Pty. Ltd.  
email:support@sge.com

SGE Incorporated (USA)  
email:usa@sge.com

SGE (France) Sarl  
email:france@sge.com

SGE Deutschland GmbH  
email:germany@sge.com

SGE Japan Inc.  
email:sgejpn@itjit.ne.jp

SGE Australia Pty. Ltd.  
email:sales@sge.com

SGE Europe Ltd. (UK)  
email:uk@sge.com

SGE (Italia) Srl.  
email:sge.italia@tin.it

SGE China Service Centre  
email:sge@bj.col.com.cn

SGE India  
email:sgeindia@bom4.vsnl.net.in