

PHA 15

PHARMACEUTICALS/DRUGS

Analysis of Horse Racing Test Mix on BPX5

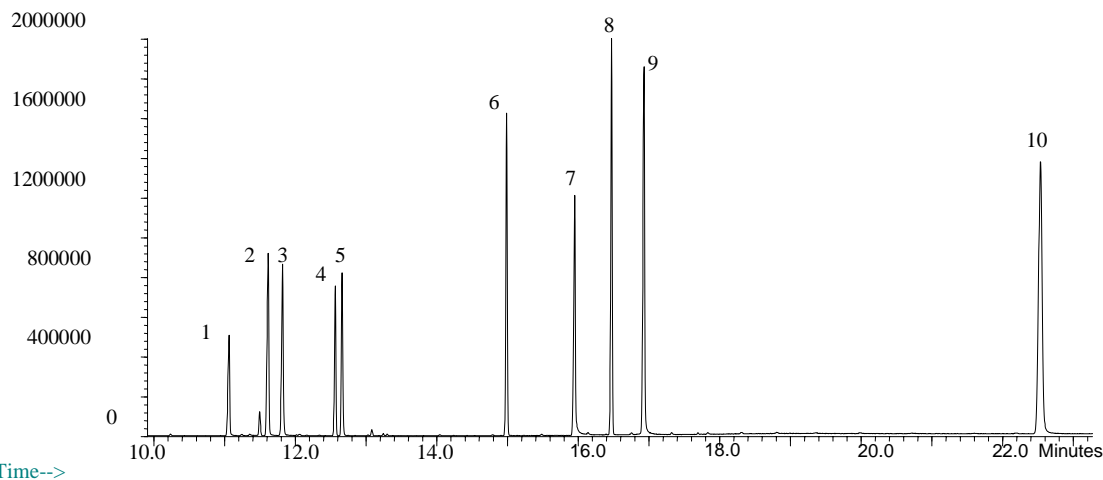
Phase: BPX5, 0.25µm film
Horse Racing standard*: 10ppm in methanol
Column: 30m x 0.25 mm ID
Initial Temp: 75°C, 2 min.
Rate 1: 15°C/min to 300°C,
Rate 2: 20°C/min to 320°C
Final Temp: 320°C, 8 min.
Detector Type: Mass Spectrometer
Carrier Gas: He, 14.5 psi
Carrier Gas Flow: 1.5 mL/min.
Constant Flow: On
Average Linear Velocity: 45 cm/sec at 75°C
Injection Mode: Splitless
Purge on Time: 0.5 min.
Purge on (Split) Vent Flow: 60mL/min.
Injection Volume: 1 µL
Injection Temperature: 250°C
Autosampler: No
Liner Type: 4 mm ID Double Taper Liner
Liner Part Number: 092018
Column Part Number: 054101

Component

1. Metronidazole
2. Amylobarbitone
3. Pentobarbitone
4. Caffeine
5. Diphenhydramine
6. Trimipramine
7. Phenytoin
8. Diazepam
9. Nordiazepam
10. Diphenoxylate

*Sample supplied by Racing Analytical Services Ltd.

Abundance



Time-->

visit www.sge.com or contact our technical Customer Support Team on: techsupport@sge.com

SGE International Pty. Ltd.
email: support@sge.com

SGE Incorporated (USA)
email: usa@sge.com

SGE (France) Sarl
email: france@sge.com

SGE Deutschland GmbH
email: germany@sge.com

SGE Japan Inc.
email: sgejpn@itjit.ne.jp

SGE Australia Pty. Ltd.
email: sales@sge.com

SGE Europe Ltd. (UK)
email: uk@sge.com

SGE (Italia) Srl.
email: sge.italia@tin.it

SGE China Service Centre
email: sge@bj.col.com.cn

SGE India
email: sgeindia@bom4.vsnl.net.in