

**PHA 06**

**PHARMACEUTICALS/DRUGS**

## Analysis of Basic Drug Screen on BPX5 (10-20ng/component)

**KEYWORDS:**

Basic Drugs

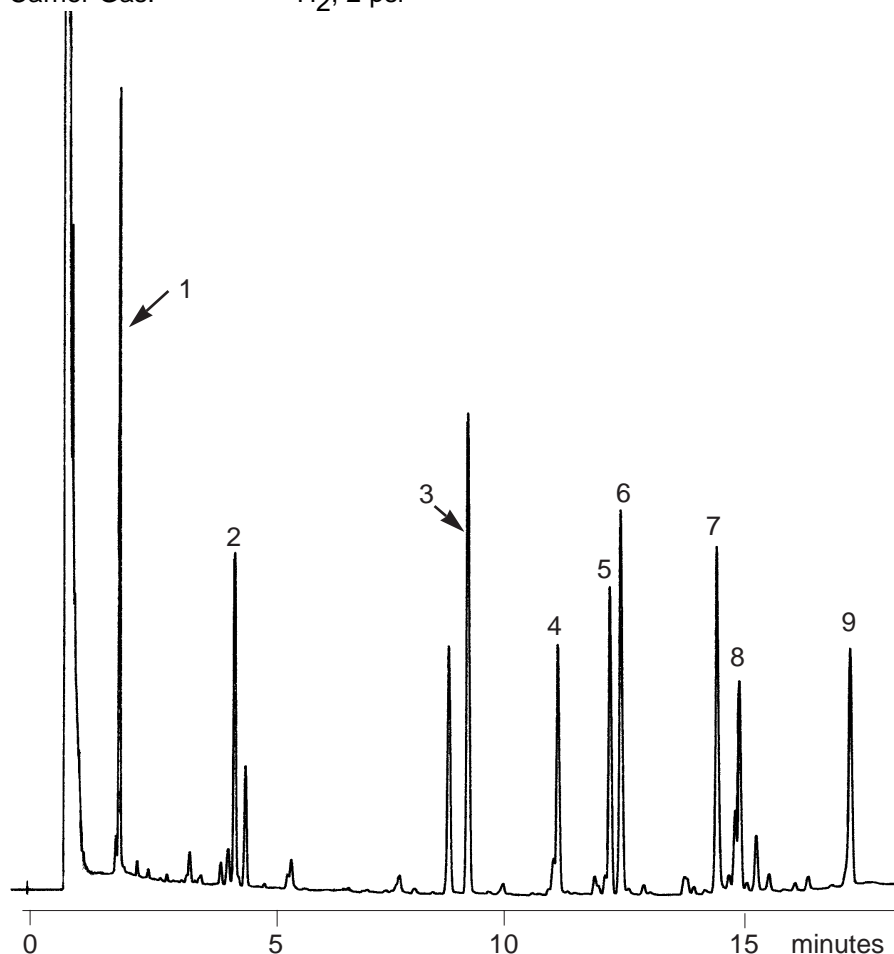
**Notes:** The low bleed nature of the BPX5 allows trace analysis to be performed.

**BASIC DRUG SCREEN  
(10-20ng/component)**

Part No.: 054131  
Phase: BPX5, 1.0µm  
Column: 25m x 0.53mm I.D.  
Initial Temp.: 120°C  
Rate: 10°C/min  
Final Temp.: 310°C  
Detector: FID  
Injector: Split, 240°C  
Carrier Gas: H<sub>2</sub>, 2 psi

**Components**

1. Methamphetamine
2. Phendimetrazine
3. Phencyclidine
4. Mepivocaine
5. Methaqualone
6. Amitriptyline
7. Codeine
8. Diazepam
9. Fentanyl



visit [www.sge.com](http://www.sge.com) or contact our technical Customer Support Team on: [techsupport@sge.com](mailto:techsupport@sge.com)

SGE International Pty. Ltd.  
email: support@sge.com

SGE Incorporated (USA)  
email: usa@sge.com

SGE (France) Sarl  
email: france@sge.com

SGE Deutschland GmbH  
email: germany@sge.com

SGE Japan Inc.  
email: sgejpn@itjit.ne.jp

SGE Australia Pty. Ltd.  
email: sales@sge.com

SGE Europe Ltd. (UK)  
email: uk@sge.com

SGE (Italia) Srl.  
email: sge.italia@tin.it

SGE China Service Centre  
email: sge@bj.col.com.cn

SGE India  
email: sgeindia@bom4.vsnl.net.in