

PHA 04

PHARMACEUTICALS/DRUGS

Analysis of Sedatives/Hypnotics on BP1

KEYWORDS:

Sedatives

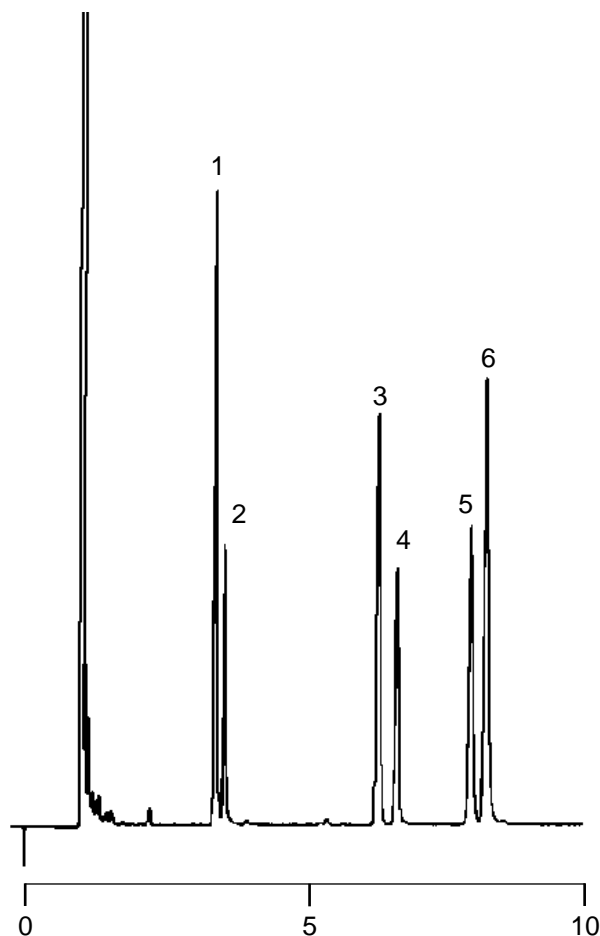
Hypnotics

SEDATIVES/HYPNOTICS

Part No.: 054087
Phase: BP1, 1.0µm film
Column: 25m x 0.53mm ID
Initial Temp: 180°C, 0 min
Rate: 10°C/min
Final Temp: 250°C, 3 min
Detector: FID
Sensitivity: 1024 x 10⁻¹² AFS
Injection Mode: Split

Components

1. Allobarbital
2. Aprobarbital
3. Diphenhydramine
4. Mephobarbital
5. Methapyrilene
6. Chloropheniramine



visit www.sge.com or contact our technical Customer Support Team on: techsupport@sge.com

SGE International Pty. Ltd.
email: support@sge.com

SGE Incorporated (USA)
email: usa@sge.com

SGE (France) Sarl
email: france@sge.com

SGE Deutschland GmbH
email: germany@sge.com

SGE Japan Inc.
email: sgejpn@itjit.ne.jp

SGE Australia Pty. Ltd.
email: sales@sge.com

SGE Europe Ltd. (UK)
email: uk@sge.com

SGE (Italia) Srl.
email: sge.italia@tin.it

SGE China Service Centre
email: sge@bj.col.com.cn

SGE India
email: sgeindia@bom4.vsnl.net.in