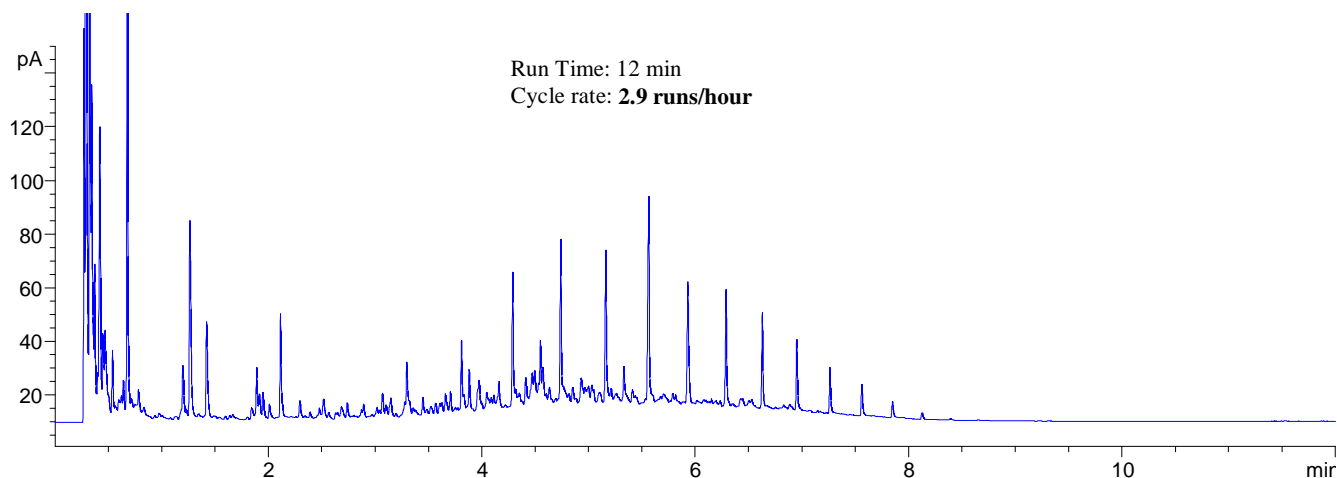


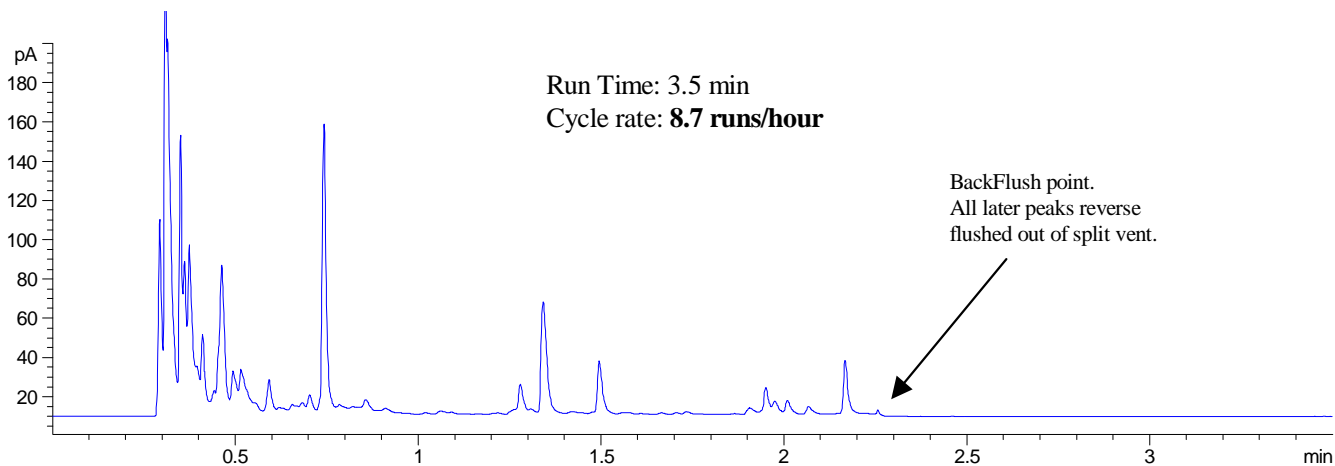
**PET 28  
PETROLEUM**

## C5 to C9 Volatiles Screening - Fast BackFlushing method

**Figure 1. Gasoline and Diesel mixed.**  
Normal analysis, without back flushing

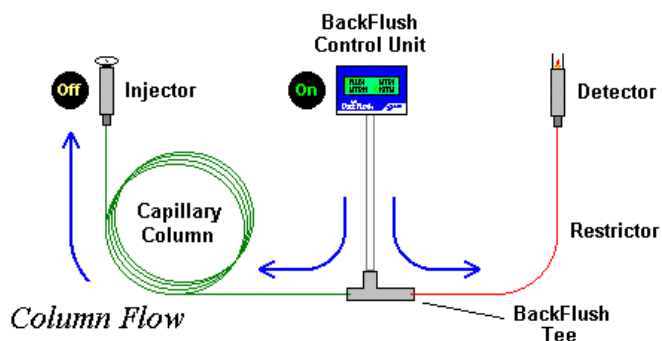
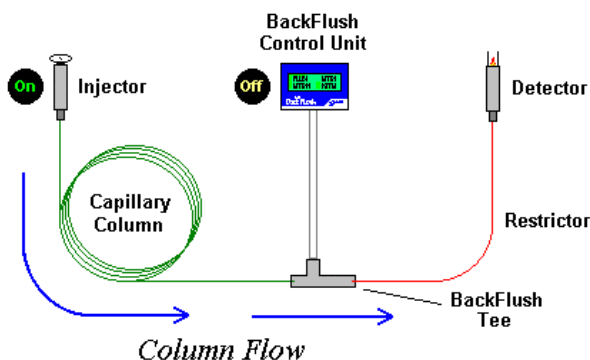


**Figure 2. Gasoline and Diesel mixed.**  
Fast screening, with back flushing



BackFlush System in analysis mode.

BackFlush System in flush mode.



Please Scroll Down for Conditions

## Normal analysis without back flushing (Figure 1)

**Phase:** BPX5, 0.25µm film  
**Sample:** Gasoline and Diesel mixed 1:1  
**Column:** 5m x 0.1 mm ID  
Initial Temp: 50°C, 1 min.  
Rate 1: 30°C/min.  
Final Temp: 320°C, 2 min.  
Detector Type: FID  
Detector Temperature: 320°C  
Carrier Gas: He, 23psi  
Constant Flow: Off, constant pressure ON  
Average Linear Velocity: 30 cm/sec at 50°C  
Injection Mode: Split  
Split Ratio: approx. 100:1  
Injection Volume: 0.1 µL  
Injection Temperature: 250°C  
Autosampler: Yes, Fast Injection Mode  
Liner Type: 4 mm ID Single Taper  
**Liner Part Number:** 092017  
**Column Part Number:** 054101

## Fast screening with back flushing (Figure 2)

**Phase:** BPX5, 0.25µm film  
**Sample:** Gasoline and Diesel mixed 1:1  
**Column:** 5m x 0.1 mm ID  
Initial Temp: 50°C, 1 min.  
Rate 1: 30°C/min.  
Final Temp: 125°C, 0 min.  
Detector Type: FID  
Detector Temperature: 320°C  
Carrier Gas: He, 23psi ramped to 0psi at 2.20min  
Constant Flow: Off, pressure ramp ON  
BackFlush ON: 2.25min.  
BackFlush OFF: 3.5min. (End of run)  
BackFlush Pressure: 30psi  
Average Linear Velocity: 30 cm/sec at 50°C  
Injection Mode: Split  
Split Ratio: approx. 100:1  
Injection Volume: 0.1 µL  
Injection Temperature: 250°C  
Autosampler: Yes, Fast Injection Mode  
Liner Type: 4 mm ID Single Taper  
Liner  
**Liner Part Number:** 092017  
**Column Part Number:** 054101  
**BackFlush System:** 093352

visit [www.sge.com](http://www.sge.com) or contact our technical Customer Support Team on: [techsupport@sge.com](mailto:techsupport@sge.com)

SGE International Pty. Ltd.  
email: support@sge.com

SGE Incorporated (USA)  
email: usa@sge.com

SGE (France) Sarl  
email: france@sge.com

SGE Deutschland GmbH  
email: germany@sge.com

SGE Japan Inc.  
email: sgejpn@itjit.ne.jp

SGE Australia Pty. Ltd.  
email: sales@sge.com

SGE Europe Ltd. (UK)  
email: uk@sge.com

SGE (Italia) Srl.  
email: sge.italia@tin.it

SGE China Service Centre  
email: sge@bj.col.com.cn

SGE India  
email: sgeindia@bom4.vsnl.net.in