

FOO 20
FOOD

Plant Sterols with Temperature Program on BPX5

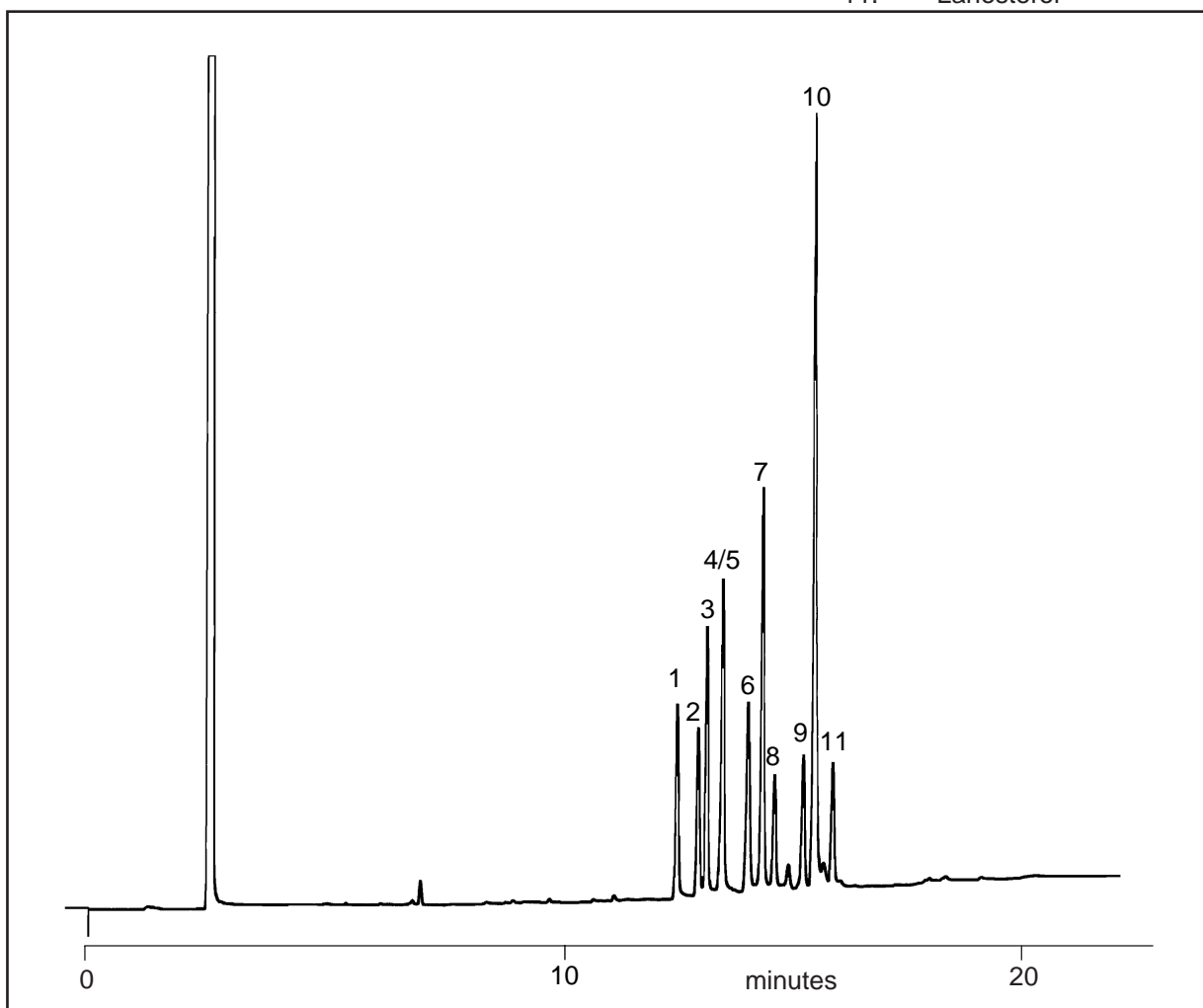
KEYWORDS:
Plant Sterols

Sterols

Part No.: 054142
Phase: BPX5, 0.25µm
Column: 30m x 0.22mm ID
Initial Temp.: 280°C, 1min
Rate 1: 4°C/min
Final Temp.: 350°C, 5min
Detector: FID, 360°C
Injector Mode: Split 100:1
Carrier Gas: Helium, 20psi
Injection Volume: 1µL

Components

1. Coprosterol
2. Cholesterol
3. Cholestanol
4. Desmesterol
5. Brassicasterol
6. Ergosterol
7. Campasterol
8. Stigmasterol
9. Unknown
10. beta-Sitosterol
11. Lanosterol



visit www.sge.com or contact our technical Customer Support Team on: techsupport@sge.com

SGE International Pty. Ltd.
email: support@sge.com

SGE Incorporated (USA)
email: usa@sge.com

SGE (France) Sarl
email: france@sge.com

SGE Deutschland GmbH
email: germany@sge.com

SGE Japan Inc.
email: sgejpn@itjit.ne.jp

SGE Australia Pty. Ltd.
email: sales@sge.com

SGE Europe Ltd. (UK)
email: uk@sge.com

SGE (Italia) Srl.
email: sge.italia@tin.it

SGE China Service Centre
email: sge@bj.col.com.cn

SGE India
email: sgeindia@bom4.vsnl.net.in