

FOO 18
FOOD

The Analysis of Plant Sterols with Temperature Program on BPX35

KEYWORDS:

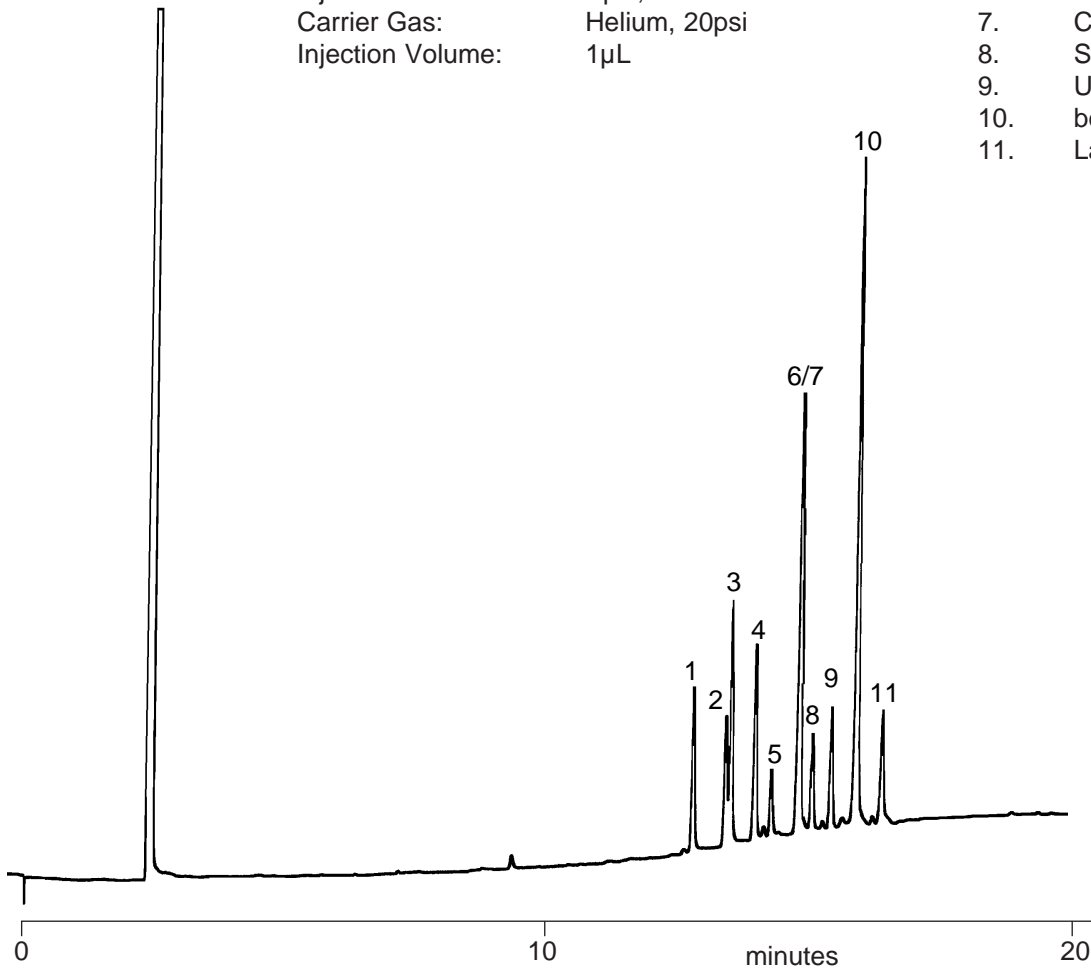
Plant Sterols

Sterols

Part No.: 054701
 Phase: BPX35, 0.25µm
 Column: 30m x 0.25mm ID
 Initial Temp.: 280°C, 1min
 Rate 1: 4°C/min
 Final Temp.: 350°, 5min
 Detector: FID, 360°C
 Injector Mode: Split, 100:1
 Carrier Gas: Helium, 20psi
 Injection Volume: 1µL

Components

1. Caprosterol
2. Cholesterol
3. Cholestanol
4. Brassicasterol
5. Desmosterol
6. Ergosterol
7. Campasterol
8. Stigmasterol
9. Unknown
10. beta-Sitosterol
11. Lanosterol



visit www.sge.com or contact our technical Customer Support Team on: techsupport@sge.com

SGE International Pty. Ltd.
email:support@sge.com

SGE Incorporated (USA)
email:usa@sge.com

SGE (France) Sarl
email:france@sge.com

SGE Deutschland GmbH
email:germany@sge.com

SGE Japan Inc.
email:sgejpn@itjit.ne.jp

SGE Australia Pty. Ltd.
email:sales@sge.com

SGE Europe Ltd. (UK)
email:uk@sge.com

SGE (Italia) Srl.
email:sge.italia@tin.it

SGE China Service Centre
email:sge@bj.col.com.cn

SGE India
email:sgeindia@bom4.vsnl.net.in