

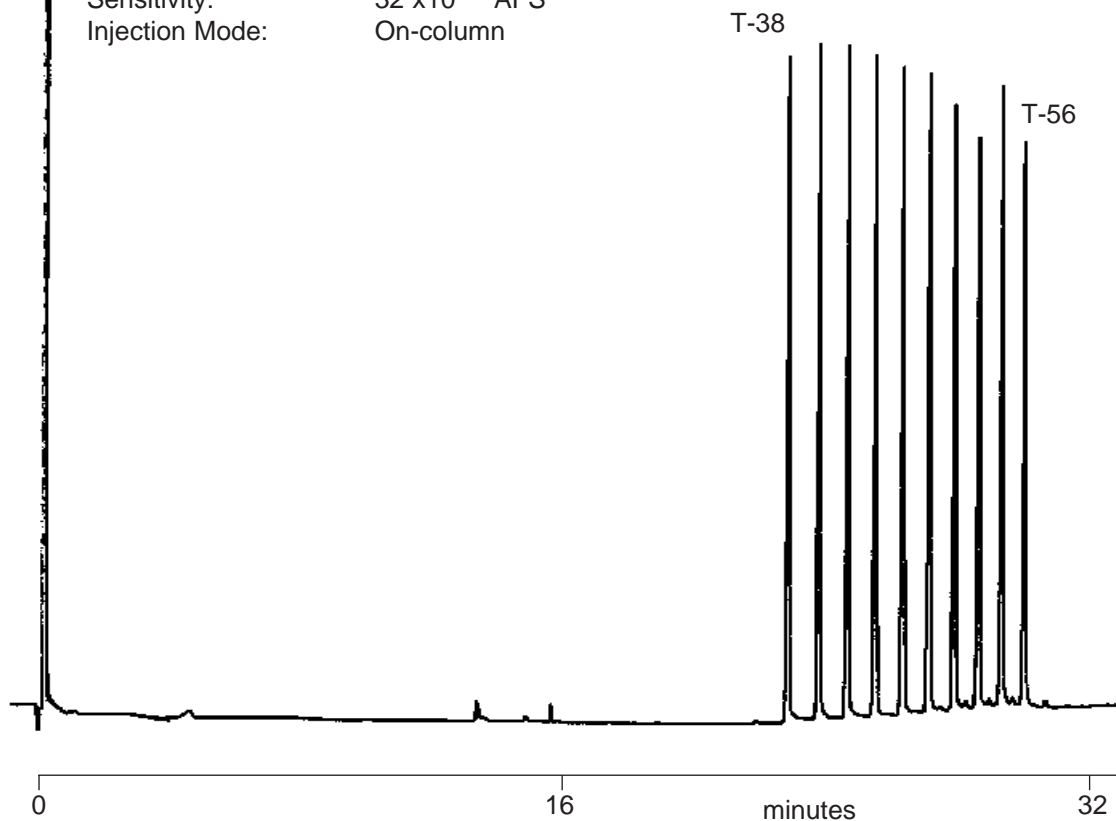
FOO 16
FOOD

Analysis of Triglyceride Standards on HT5

Notes: For the analysis of triglycerides, on-column injection is recommended. Temperatures above 380°C are not recommended as triglycerides can degrade.

ANALYSIS OF TRIGLYCERIDE STANDARDS

Part No.: 054661
Phase: HT5, 0.1µm
Column: 6m x 0.53mm I.D.
(Aluminium Clad)
Initial Temp.: 60°C, 0 min
Program Rate: 10°C/min
Final Temp.: 370°C, 5 min
Carrier Gas: H₂, 2 psi
Detector: F.I.D.
Sensitivity: 32 x 10⁻¹²AFS
Injection Mode: On-column



visit www.sge.com or contact our technical Customer Support Team on: techsupport@sge.com

SGE International Pty. Ltd.
email: support@sge.com

SGE Incorporated (USA)
email: usa@sge.com

SGE (France) Sarl
email: france@sge.com

SGE Deutschland GmbH
email: germany@sge.com

SGE Japan Inc.
email: sgejpn@itjit.ne.jp

SGE Australia Pty. Ltd.
email: sales@sge.com

SGE Europe Ltd. (UK)
email: uk@sge.com

SGE (Italia) Srl.
email: sge.italia@tin.it

SGE China Service Centre
email: sge@bj.col.com.cn

SGE India
email: sgeindia@bom4.vsnl.net.in