

FOO 15
FOOD

Free base and metal complexed porphyrins analysis on HT5

KEYWORDS:

Porphyrins

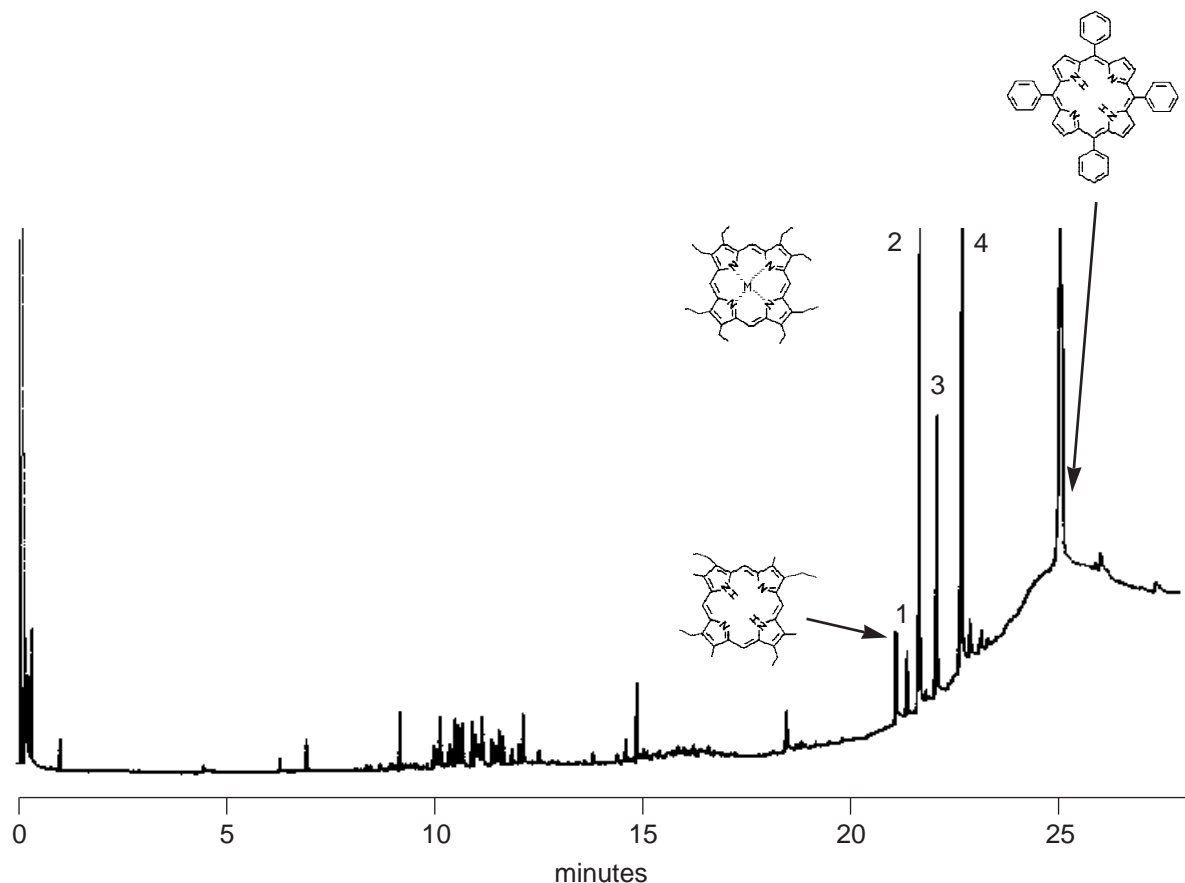
Notes: The high temperature nature of HT5 makes it the best column available for this analysis

Free base and metal complexed porphyrins

Part No.: 054651
 Phase: HT5, 0.1µm
 Column: 12m x 0.32mm I.D. (Aluminium Clad)
 Initial Temp.: 60°C, 0 min
 Program Rate 1: 20°C/min to 300°C
 Program Rate 2: 10°C/min
 Final Temp.: 430°C, 5 min
 Carrier Gas: H₂, 15 psi
 Detector: F.I.D.
 Sensitivity: 16 x10⁻¹²AFS
 Injection Mode: On-column

Components

1. Porphyrin M=TiO
2. Porphyrin M=Cu
3. Porphyrin M=VO
4. Porphyrin M=Pd



visit www.sge.com or contact our technical Customer Support Team on: techsupport@sge.com

SGE International Pty. Ltd.
email:support@sge.com

SGE Incorporated (USA)
email:usa@sge.com

SGE (France) Sarl
email:france@sge.com

SGE Deutschland GmbH
email:germany@sge.com

SGE Japan Inc.
email:sgejpn@tjit.ne.jp

SGE Australia Pty. Ltd.
email:sales@sge.com

SGE Europe Ltd. (UK)
email:uk@sge.com

SGE (Italia) Srl.
email:sge.italia@tin.it

SGE China Service Centre
email:sge@bj.col.com.cn

SGE India
email:sgeindia@bom4.vsnl.net.in