

FOO 13

FOOD

Analysis of Partially Methylated Glucose on BPX70

KEYWORDS:

Glucose Methylated

Sugars

Carbohydrates

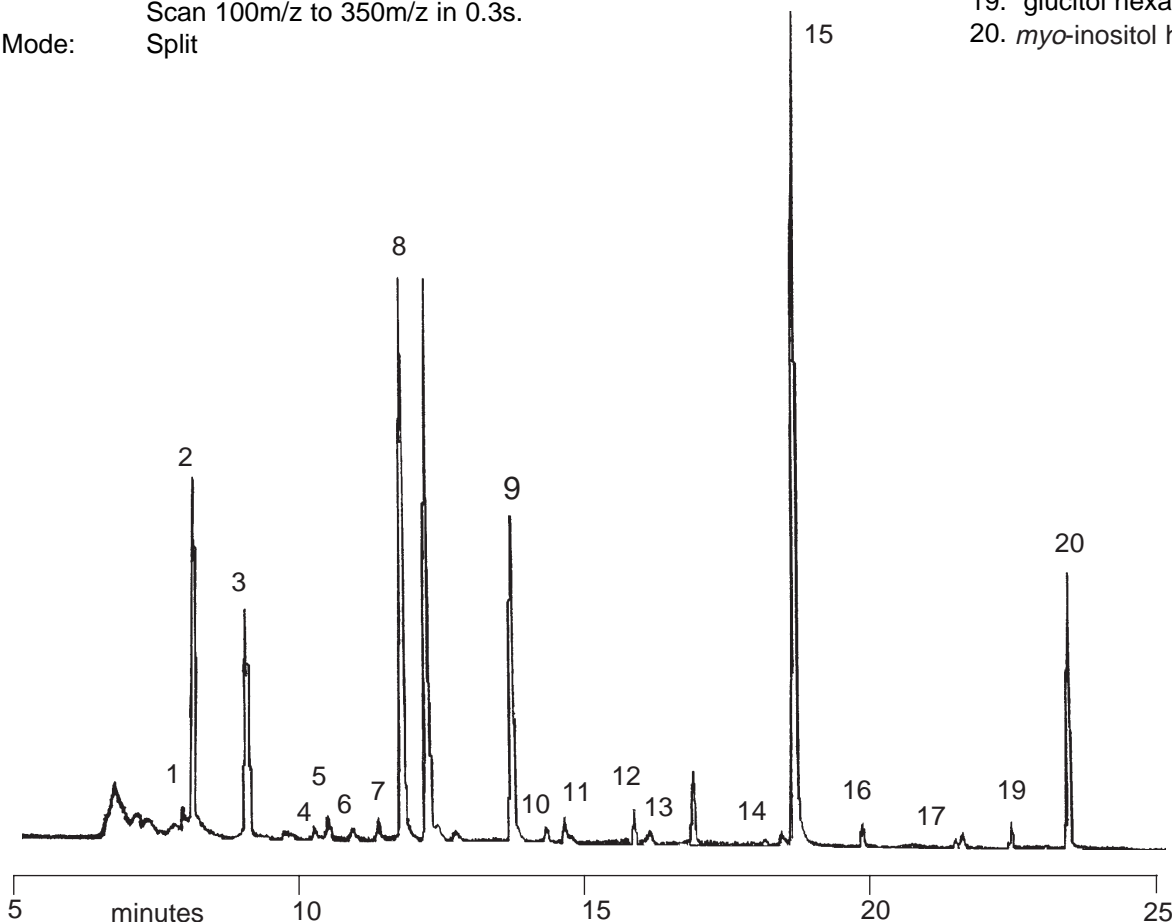
Notes: BPX70 is compatible with GC/MS systems.

Components

1. 2,3,4-O-methyl rhamnitol
2. 2,3,5-O- methyl arabinitol (f)
3. 2,3,4-O-methyl arabinitol (p)
4. 3,5-O-methyl arabinitol
5. 2,3,4,6-O-methyl glucitol
6. 2,5-O-methyl arabinitol
7. 2,3,4,6-O-methyl galactitol
8. 2,3-O-methyl arabinitol
9. 2,4,6-O-methyl galactitol
10. 2-O-methyl arabinitol
11. 2,3,6-O-methyl glucitol
12. 2,3,4-O-methyl galactitol
13. arabinitol hexa-acetate
14. xylitol hexa-acetate
15. 2,3,4,6-O-methyl galactitol
16. 2-O-methyl galactitol
17. 4-O-methyl galactitol
18. galactitol hexa-acetate
19. glucitol hexa-acetate
20. *myo*-inositol hexa-acetate

partially methylated glucose

Part No.: 054602
 Phase: BPX70, 0.25µm film
 Column: 25m x 0.22mm I.D.
 Initial Temp.: 185°C, 1min.
 Program Rate: 3°C/min.
 Final Temp: 260°C, 10min.
 Carrier Gas: He, 50kPa
 Detector: MS (Electron Impact Ionisation, Ionisation Potential 70eV)
 Scan 100m/z to 350m/z in 0.3s.
 Injection Mode: Split



visit www.sge.com or contact our technical Customer Support Team on: techsupport@sge.com

SGE International Pty. Ltd.
 email: support@sge.com

SGE Incorporated (USA)
 email: usa@sge.com

SGE (France) Sarl
 email: france@sge.com

SGE Deutschland GmbH
 email: germany@sge.com

SGE Japan Inc.
 email: sgejpn@ijit.ne.jp

SGE Australia Pty. Ltd.
 email: sales@sge.com

SGE Europe Ltd. (UK)
 email: uk@sge.com

SGE (Italia) Srl.
 email: sge.italia@tin.it

SGE China Service Centre
 email: sge@bj.col.com.cn

SGE India
 email: sgeindia@bom4.vsnl.net.in