

FOO 09

FOOD

Analysis of Triglyceride Distribution in Lard on BPX5

KEYWORDS:

Lard

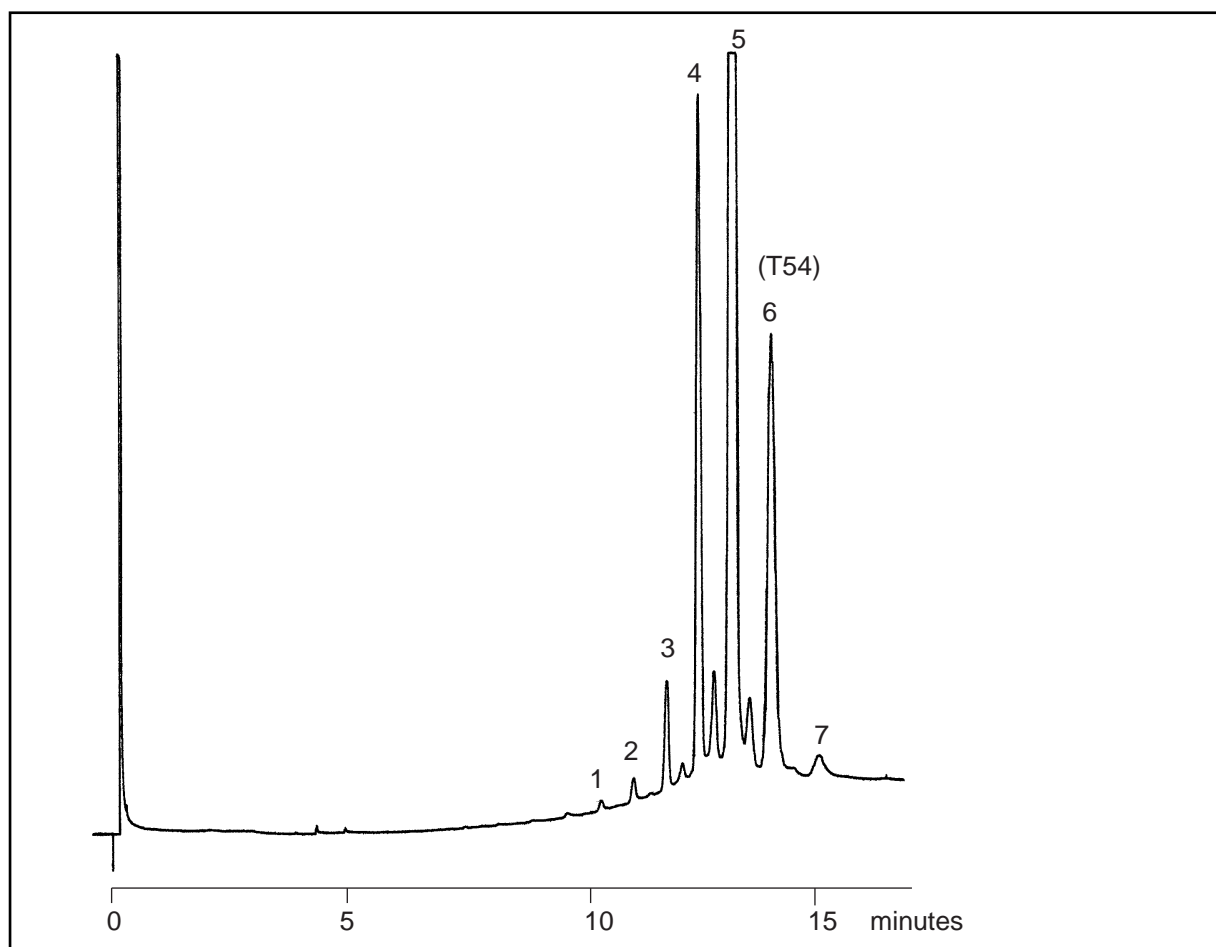
Triglycerides

TRIGLYCERIDE DISTRIBUTION IN LARD

Part No.: 054133
 Phase: BPX5, 0.25µm
 Column: 12m x 0.53mm I.D.
 Initial Temp.: 100°C, 0.5 min.
 Rate 1: 50°C/min.
 Temp.: 280°C
 Rate 2: 10°C/min.
 Final Temp: 360°C, 5 min.
 Carrier Gas: Helium, 6psi
 Injection Mode: On-column (OCI-5)
 Injection Volume: 1µL

Components

PEAK No.	TRIGLYCERIDE CARBON No.	COMPOSITION (%)
1	T44	0.21
2	T46	0.46
3	T48	2.66
4	T50	17.08
5	T52	62.93
6	T54	15.61
7	T56	1.25



visit www.sge.com or contact our technical Customer Support Team on: techsupport@sge.com

SGE International Pty. Ltd.
 email: support@sge.com

SGE Incorporated (USA)
 email: usa@sge.com

SGE (France) Sarl
 email: france@sge.com

SGE Deutschland GmbH
 email: germany@sge.com

SGE Japan Inc.
 email: sgejpn@itjit.ne.jp

SGE Australia Pty. Ltd.
 email: sales@sge.com

SGE Europe Ltd. (UK)
 email: uk@sge.com

SGE (Italia) Srl.
 email: sge.italia@tin.it

SGE China Service Centre
 email: sge@bj.col.com.cn

SGE India
 email: sgeindia@bom4.vsnl.net.in