

FOO 08
FOOD

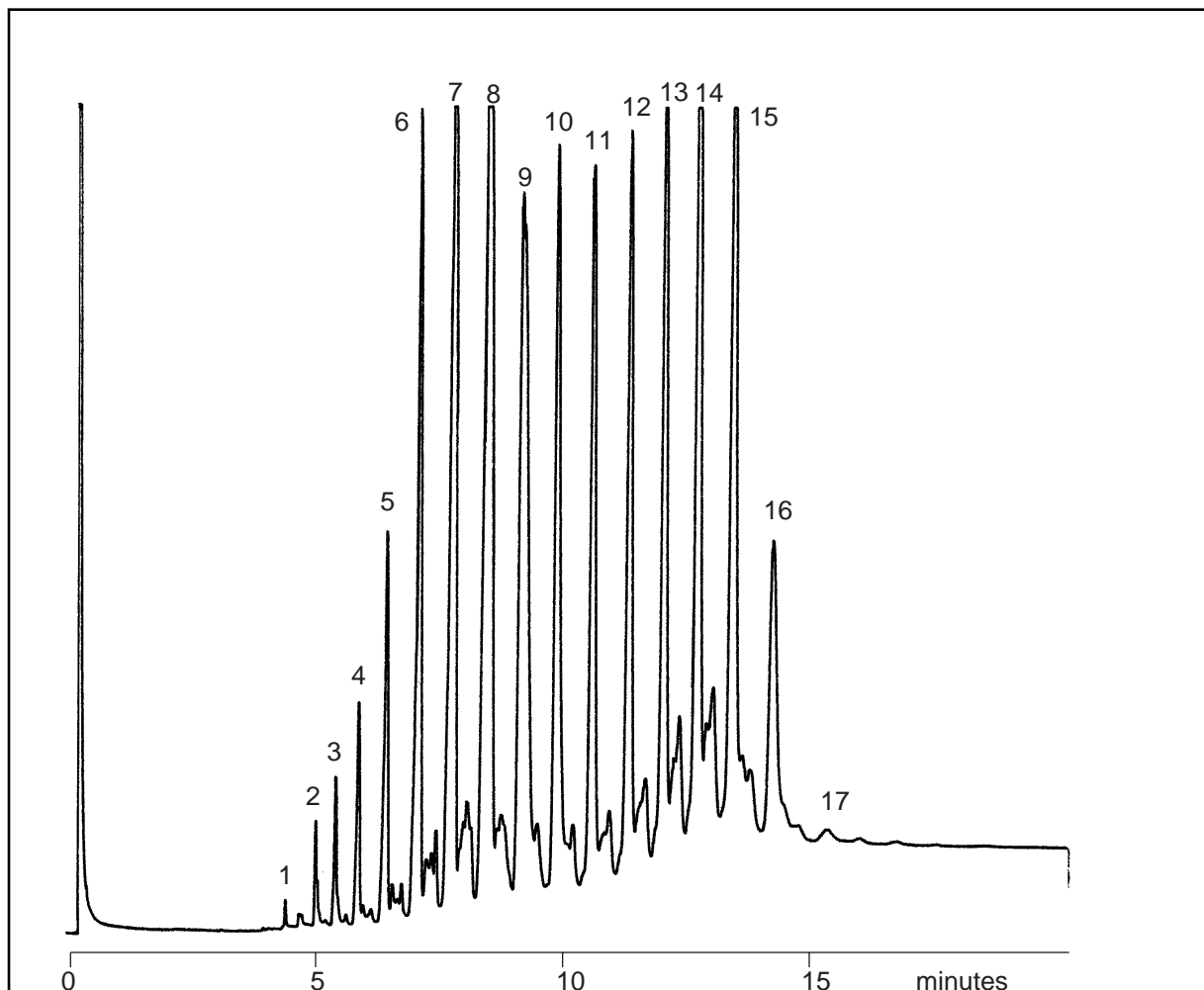
Triglyceride distribution in Milk Fat on BPX5

TRIGLYCERIDE DISTRIBUTION IN MILK FAT

Part No.: 054133
 Phase: BPX5, 0.25 μ m
 Column: 12m x 0.53mm I.D.
 Initial Temp.: 100°C, 0.5 min.
 Rate 1: 50°C/min.
 Temp.: 280°C
 Rate 2: 10°C/min.
 Final Temp.: 360°C, 5 min.
 Carrier Gas: Helium, 6psi
 Injection Mode: On-column (OCI-5)
 Injection Volume: 1 μ L

Components

PEAK No.	TRIGLYCERIDE CARBON No.	COMPOSITION (%) *
1	T24	0.12
2	T26	0.41
3	T28	0.64
4	T30	1.30
5	T32	2.61
6	T34	5.99
7	T36	11.22
8	T38	13.49
9	T40	10.55
10	T42	7.36
11	T44	6.90
12	T46	7.10
13	T48	8.41
14	T50	10.49
15	T52	9.34
16	T54	3.95
17	T56	0.22



Triglyceride distribution in Milk Fat

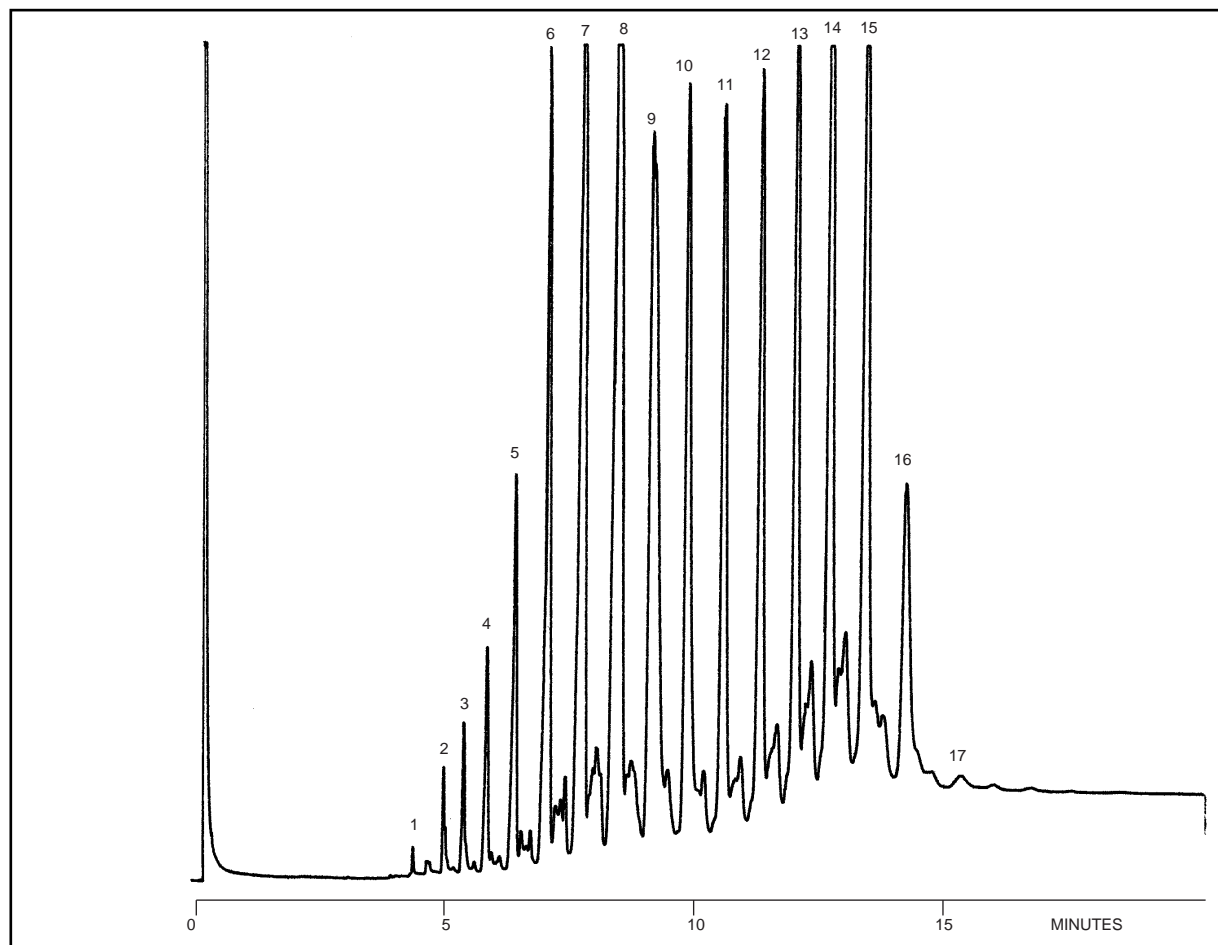
Notes: 0.53mm ID BPX5 columns are ideal for the analyses of food triglycerides because of the enhanced thermal stability of the phase.

TRIGLYCERIDE DISTRIBUTION IN MILK FAT

Part No.: 054133
 Phase: BPX5, 0.25µm
 Column: 12m x 0.53mm I.D.
 Initial Temp.: 100°C, 0.5 min.
 Rate 1: 50°C/min.
 Temp.: 280°C
 Rate 2: 10°C/min.
 Final Temp: 360°C, 5 min.
 Carrier Gas: Helium, 6psi
 Injection Mode: On-column (OCI-5)
 Injection Volume: 1µL

Components

PEAK No.	TRIGLYCERIDE CARBON No.	COMPOSITION (%) *
1	T24	0.12
2	T26	0.41
3	T28	0.64
4	T30	1.30
5	T32	2.61
6	T34	5.99
7	T36	11.22
8	T38	13.49
9	T40	10.55
10	T42	7.36
11	T44	6.90
12	T46	7.10
13	T48	8.41
14	T50	10.49
15	T52	9.34
16	T54	3.95
17	T56	0.22



visit www.sge.com or contact our technical Customer Support Team on: techsupport@sge.com

SGE International Pty. Ltd.
email:support@sge.com

SGE Incorporated (USA)
email:usa@sge.com

SGE (France) Sarl
email:france@sge.com

SGE Deutschland GmbH
email:germany@sge.com

SGE Japan Inc.
email:sgejpn@itjit.ne.jp

SGE Australia Pty. Ltd.
email:sales@sge.com

SGE Europe Ltd. (UK)
email:uk@sge.com

SGE (Italia) Srl.
email:sge.italia@tin.it

SGE China Service Centre
email:sge@bj.col.com.cn

SGE India
email:sgeindia@bom4.vsnl.net.in