

FOO 06

FOOD

## Analysis of Sugar Alditol Acetates on a 12m BPX70 column

### KEYWORDS:

Alditol Acetates

Sugars

Carbohydrates

Mono saccharides

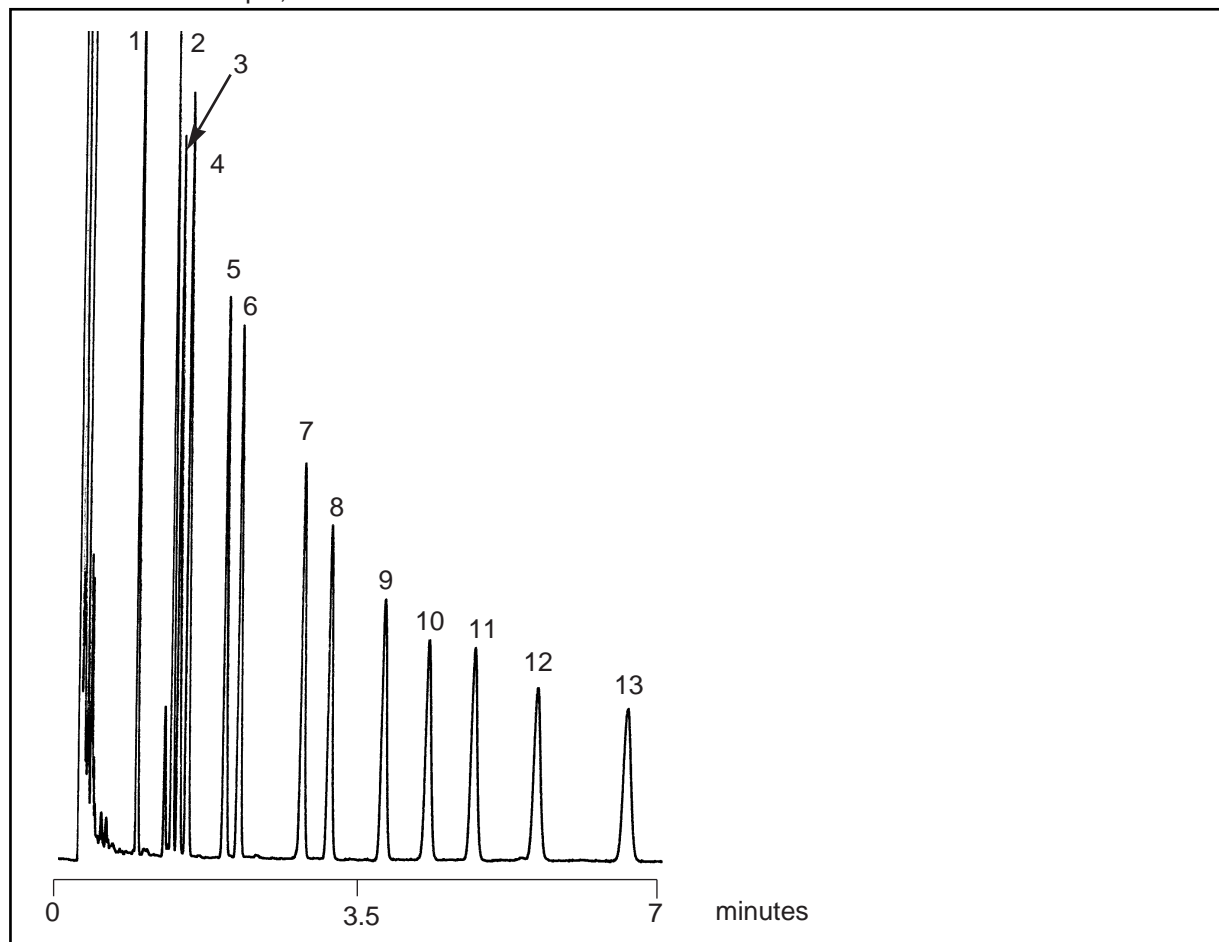
### ALDITOL ACETATES

Part No.: 054605  
Phase: BPX70, 0.25µm film  
Column: 12m x 0.32mm I.D.  
Temp.: Isothermal at 210°C  
Carrier Gas: H<sub>2</sub>  
Detector: F.I.D.  
Sensitivity: 16 x10<sup>-12</sup>AFS  
Injection Mode: Split, 50:1

**Notes:** The polarity of BPX70 enables rapid analysis of Alditol Acetates. BPX70 is the only highly polar column compatible with GC/MS

### Components

1. Erythritol
2. Deoxyribose
3. Rhamnitol
4. Fucitol
5. Ribitol
6. Arabinitol
7. Xylitol
8. Deoxyglucitol
9. Allitol
10. Mannitol
11. Galactitol
12. Glucitol
13. Inositol



visit [www.sge.com](http://www.sge.com) or contact our technical Customer Support Team on: [techsupport@sge.com](mailto:techsupport@sge.com)

SGE International Pty. Ltd.  
email: support@sge.com

SGE Incorporated (USA)  
email: usa@sge.com

SGE (France) Sarl  
email: france@sge.com

SGE Deutschland GmbH  
email: germany@sge.com

SGE Japan Inc.  
email: sgejpn@itjit.ne.jp

SGE Australia Pty. Ltd.  
email: sales@sge.com

SGE Europe Ltd. (UK)  
email: uk@sge.com

SGE (Italia) Srl.  
email: sge.italia@tin.it

SGE China Service Centre  
email: sge@bj.col.com.cn

SGE India  
email: sgeindia@bom4.vsnl.net.in