

**FOO 05**

**FOOD**

## Arabinogalactan protein from plant cell suspension culture on BPX70

**KEYWORDS:**

Carbohydrates

Sugar

Mono saccharides

GC/MS

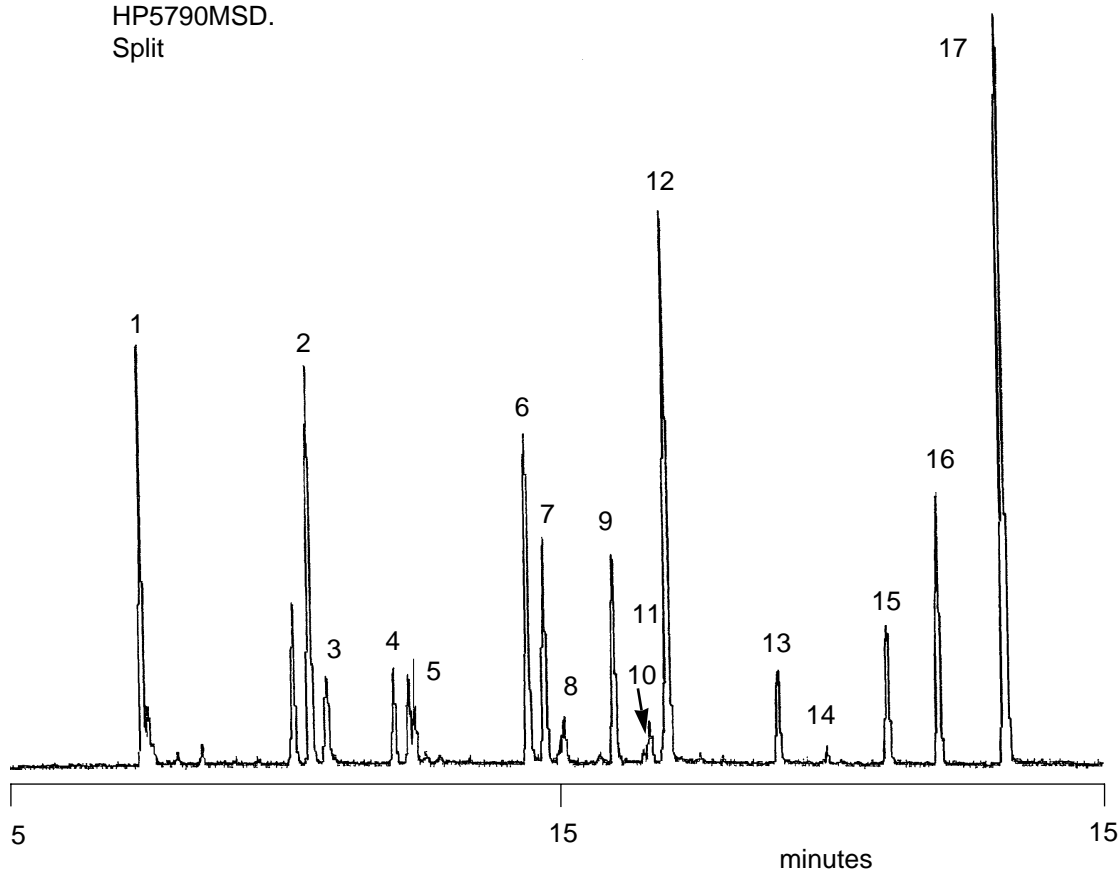
**Notes:** BPX70 is the only polar column commercially available suitable for GC/MS application

**Components**

1. 2,3,4,6-O-methyl glucitol
2. 2,4,6-O- methyl glucitol
3. 3,4,6-O-methyl glucitol
4. 2,3,4-O-methyl glucitol
5. 2,3,6-O-methyl glucitol
6. 2,6-O-methyl glucitol
7. 4,6-O-methyl glucitol
8. 3,6-O-methyl glucitol
9. 2,4-O-methyl glucitol
10. 2,3-O-methyl glucitol
11. 3,4-O-methyl glucitol
12. 6-O-methyl glucitol
13. 2-O-methyl glucitol
14. 3-O-methyl glucitol
15. 4-O-methyl glucitol
16. glucitol hexa-acetate
17. *myo*-inositol hexa-acetate

**ARABINO GALACTAN PROTEIN FROM PLANT CELL SUSPENSION CULTURE**

Part No.: 054622  
 Phase: BPX70, 0.25µm film  
 Column: 30m x 0.25mm I.D.  
 Initial Temp.: 190°C, 1min.  
 Program Rate: 3°C/min.  
 Final Temp: 260°C, 10min.  
 Carrier Gas: He, 50kPa  
 Detector: HP5790MSD.  
 Injection Mode: Split



visit [www.sge.com](http://www.sge.com) or contact our technical Customer Support Team on: [techsupport@sge.com](mailto:techsupport@sge.com)

SGE International Pty. Ltd.  
 email:support@sge.com

SGE Incorporated (USA)  
 email:usa@sge.com

SGE (France) Sarl  
 email:france@sge.com

SGE Deutschland GmbH  
 email:germany@sge.com

SGE Japan Inc.  
 email:sgejpn@itjit.ne.jp

SGE Australia Pty. Ltd.  
 email:sales@sge.com

SGE Europe Ltd. (UK)  
 email:uk@sge.com

SGE (Italia) Srl.  
 email:sge.italia@tin.it

SGE China Service Centre  
 email:sge@bj.col.com.cn

SGE India  
 email:sgeindia@bom4.vsnl.net.in