

**FOO 04**

**FOOD**

## Analysis of 13 Sugar component alditol acetate mixture on BPX70

**KEYWORDS:**

Alditol Acetates

Sugar

Monosaccharides

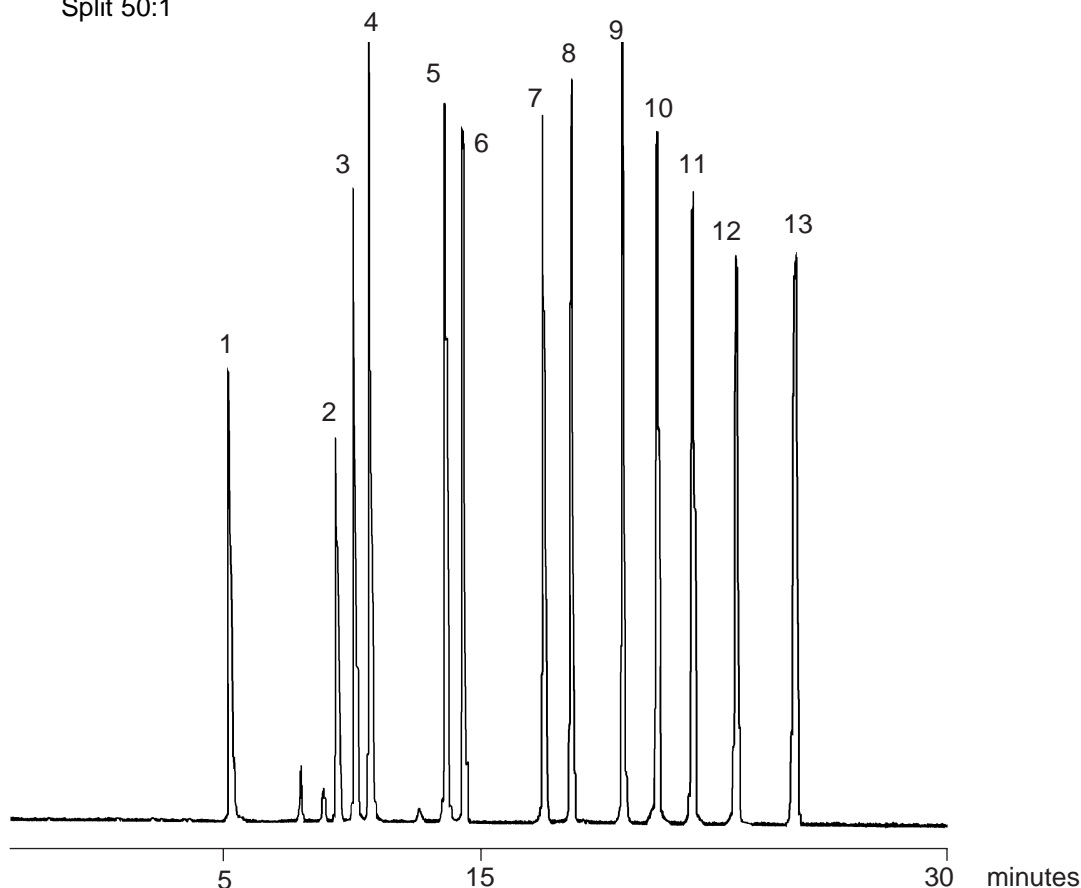
**Notes:** BPX70 column, though a very polar phase, is compatible with GC/MS systems

### 13 Component Alditol Acetate Mixture

Part No.: 054622  
 Phase: BPX70, 0.25µm film  
 Column: 30m x 0.25mm I.D.  
 Initial Temp.: 190°C, 1min.  
 Program Rate: 3°C/min.  
 Final Temp: 260°C, 10min.  
 Carrier Gas: He, 50kPa  
 Detector: MS (Electron Impact Ionisation, Ionisation Potential 70eV)  
 Scan 100m/z to 350m/z in 0.3s.  
 Injection Mode: Split 50:1

### Components

- |                    |                     |
|--------------------|---------------------|
| 1. Erythritol      | 8. 2-Deoxy-glucitol |
| 2. 2-Deoxy-ribitol | 9. Allitol          |
| 3. Rhamnitol       | 10. Mannitol        |
| 4. Fucitol         | 11. Galacitol       |
| 5. Ribitol         | 12. Glucitol        |
| 6. Arabinitol      | 13. Myo-inositol    |
| 7. Xylitol         |                     |



visit [www.sge.com](http://www.sge.com) or contact our technical Customer Support Team on: [techsupport@sge.com](mailto:techsupport@sge.com)

SGE International Pty. Ltd.  
email: support@sge.com

SGE Australia Pty. Ltd.  
email: sales@sge.com

SGE Incorporated (USA)  
email: usa@sge.com

SGE Europe Ltd. (UK)  
email: uk@sge.com

SGE (France) Sarl  
email: france@sge.com

SGE (Italia) Srl.  
email: sge.italia@tin.it

SGE Deutschland GmbH  
email: germany@sge.com

SGE China Service Centre  
email: sge@bj.col.com.cn

SGE Japan Inc.  
email: sgejpn@itjit.ne.jp

SGE India  
email: sgeindia@bom4.vsnl.net.in