

FLA/FRA 23

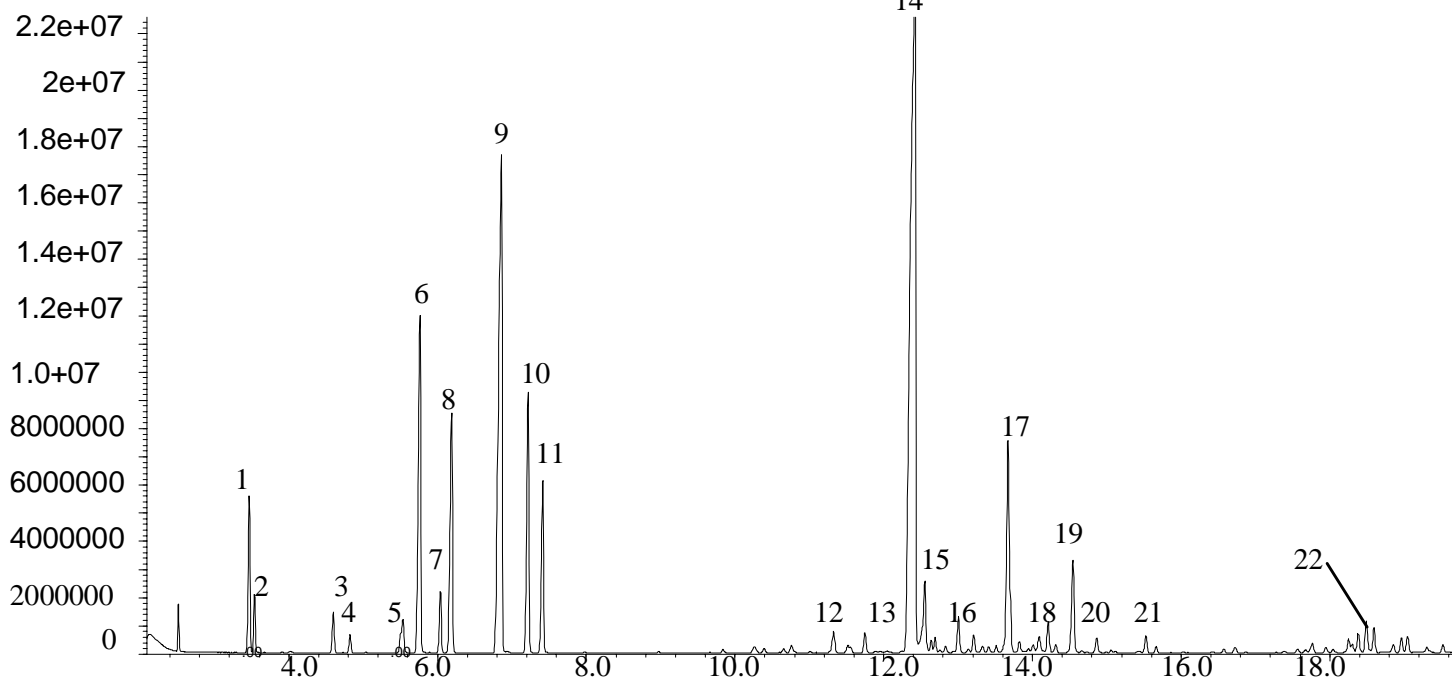
Flavours/Fragrances

Analysis of Teatree oil on SolGel-Wax™

Phase: SolGel-WAX, 0.25µm film
Sample: 10ppm in methanol
Column: 30m x 0.25 mm ID
Initial Temp: 40°C, 1 min.
Rate 1: 8°C/min to 220°C,
Final Temp: 220°C, 5 min.
Detector Type: Mass Spectrometer
Carrier Gas: He, 25.7 psi
Carrier Gas Flow: 1.8 mL/min.
Constant Flow: On
Average Linear Velocity: 35 cm/sec at 40°C
Injection Mode: Split
Split Ratio: 100:1
Injection Volume: 0.2 µL
Injection Temperature: 250°C
Autosampler: No
Liner Type: 4 mm ID Single Taper Liner
Liner Part Number: 092017
Column Part Number: 054796
ms-NoVent™ Part no.: 113400
HP5973 restrictor: 113409
Full Scan / SIM: Full scan 45-450

Components

1. α-Pinene
2. α-Phellandrene
3. β-Pinene
4. Sabinene
5. Myrcene
6. α-Terpinene
7. Limonene
8. 1,8-Cineole
9. γ-Terpinene
10. *p*-Cymene
11. Terpinolene
12. α-Gurjunene
13. 1-Terpineol
14. Terpinen-4-ol
15. Aromadendrene
16. Alloaromadendrene
17. α-Terpineol
18. Bicyclogermacrene
19. δ-Cadinene
20. Cadina-1,4-diene
21. (-) Calamenene
22. Globulol



visit www.sge.com or contact our technical Customer Support Team on: techsupport@sge.com

SGE International Pty. Ltd.
email:support@sge.com

SGE Incorporated (USA)
email:usa@sge.com

SGE (France) Sarl
email:france@sge.com

SGE Deutschland GmbH
email:germany@sge.com

SGE Japan Inc.
email:sgejpn@itjit.ne.jp

SGE Australia Pty. Ltd.
email:sales@sge.com

SGE Europe Ltd. (UK)
email:uk@sge.com

SGE (Italia) Srl.
email:sge.italia@tin.it

SGE China Service Centre
email:sge@bj.col.com.cn

SGE India
email:sgeindia@bom4.vsnl.net.in