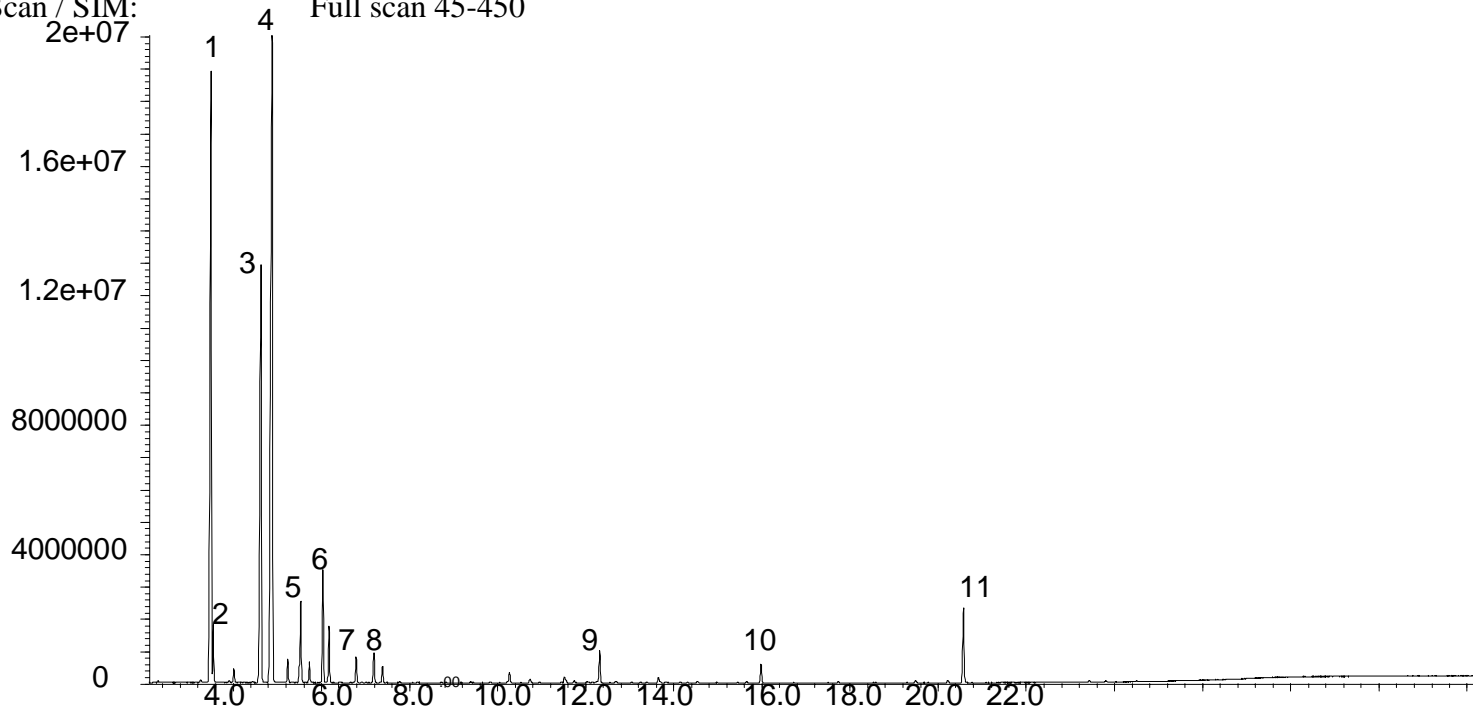


Phase: SolGel-Wax™, 0.25µm film
Sample: 2000-3000ppm in ethanol
Column: 30m x 0.25 mm ID
Initial Temp: 40°C, 1 min.
Rate 1: 8°C/min to 220°C,
Final Temp: 220°C, 5 min.
Detector Type: Mass Spectrometer
Carrier Gas: He, 25.7 psi
Carrier Gas Flow: 1.8 mL/min.
Constant Flow: On
Average Linear Velocity: 35 cm/sec at 40°C
Injection Mode: Split
Split Ratio: 100:1
Injection Volume: 0.2 µL
Injection Temperature: 250°C
Autosampler: No
Liner Type: 4 mm ID Single Taper Liner
Liner Part Number: 092017
Column Part Number: 054796
ms-NoVent™ Part no.: 113400
HP5973 restrictor: 113409
Full Scan / SIM: Full scan 45-450

Components

1. α-Pinene
2. α-Phellandrene
3. β-Pinene
4. Sabinene
5. Myrcene
6. Limonene
7. γ-Terpinene
8. p-Cymene
9. Terpinen-4-ol
10. Safrole
11. Myristicin



visit www.sge.com or contact our technical Customer Support Team on: techsupport@sge.com