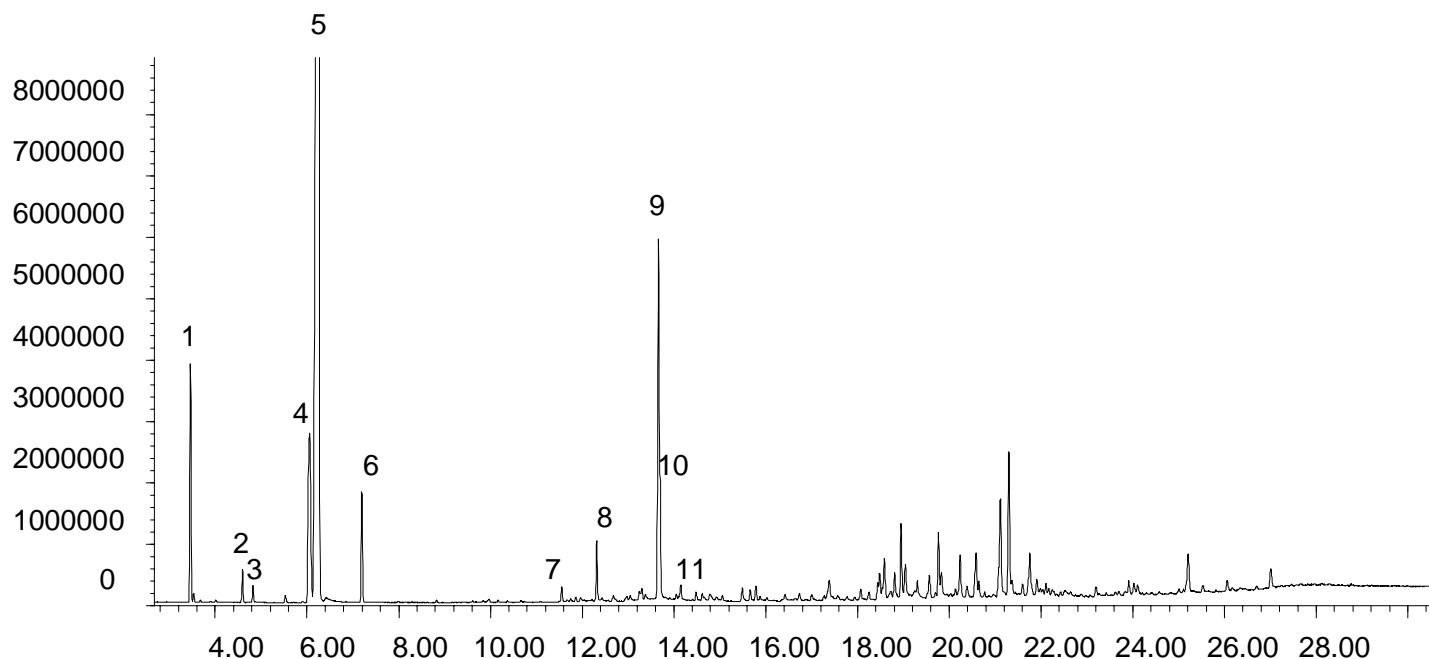


FLA/FRA 19 Flavours/Fragrances

Analysis of Eucalyptus Oil on SolGel-WAX™

Phase: SolGel-Wax™, 0.25µm film
Sample: neat
Column: 30m x 0.25 mm ID
Initial Temp: 40°C, 1 min.
Rate 1: 8°C/min to 220°C,
Final Temp: 220°C, 5 min.
Detector Type: Mass Spectrometer
Carrier Gas: He, 25.7 psi
Carrier Gas Flow: 1.8 mL/min.
Constant Flow: On
Average Linear Velocity: 35 cm/sec at 40°C
Injection Mode: Split
Split Ratio: 100:1
Injection Volume: 0.2 µL
Injection Temperature: 250°C
Autosampler: No
Liner Type: 4 mm ID Single Taper Liner
Liner Part Number: 092017
Column Part Number: 054796
ms-NoVent™ Part no.: 113400
HP5973 restrictor: 113409
Full Scan / SIM: Full scan 45-450

Components
 1. α-Pinene
 2. β-Pinene
 3. Sabinene
 4. Limonene
 5. 1,8-Cineole
 6. *p*-Cymene
 7. Linalool L
 8. Terpinen-4-ol
 9. α-Terpineol
 10. α-Terpinenyl acetate
 11. d-Carvone



visit www.sge.com or contact our technical Customer Support Team on: techsupport@sge.com

SGE International Pty. Ltd.
email: support@sge.com

SGE Incorporated (USA)
email: usa@sge.com

SGE (France) Sarl
email: france@sge.com

SGE Deutschland GmbH
email: germany@sge.com

SGE Japan Inc.
email: sgejpn@itjit.ne.jp

SGE Australia Pty. Ltd.
email: sales@sge.com

SGE Europe Ltd. (UK)
email: uk@sge.com

SGE (Italia) Srl.
email: sge.italia@tin.it

SGE China Service Centre
email: sge@bj.col.com.cn

SGE India
email: sgeindia@bom4.vsnl.net.in