

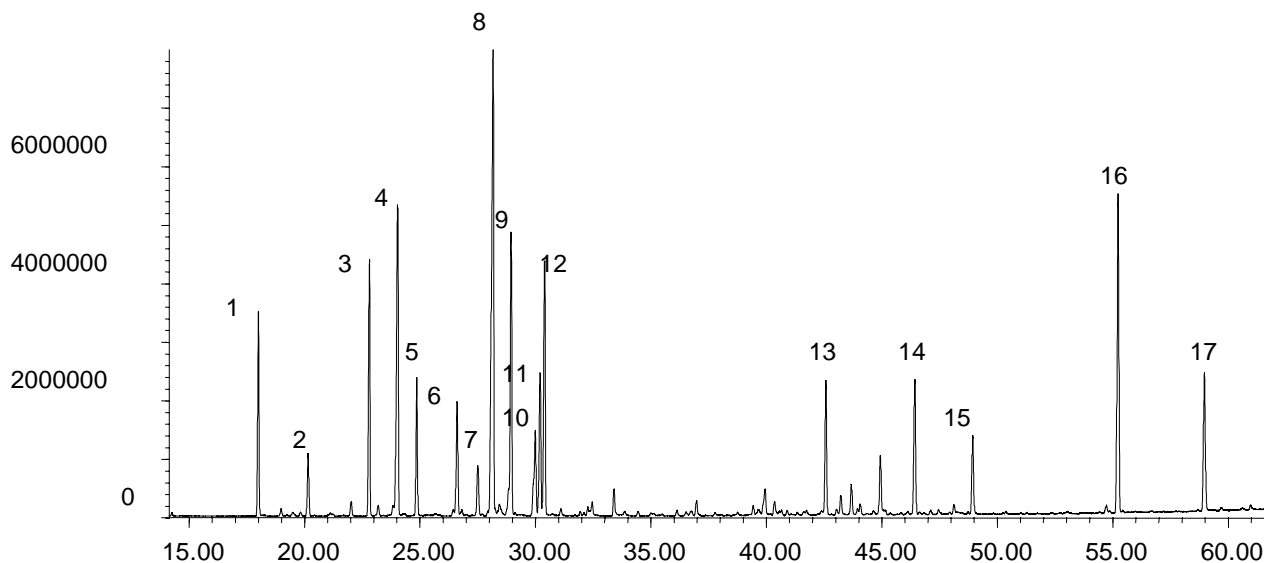
FRA/FLA 18

FLAVOURS/FRAGRANCES

Analysis of Ylang Ylang Oil on SolGel-WaxTM Components

Phase: SolGel-WaxTM, 0.25 μ m
Sample: Ylang Ylang oil neat.
Column: 30m x 0.25 mm ID
 Initial Temp: 40°C, 2 min.
 Rate 1: 3°C/min to 250°C,
 Final Temp: 250°C, 10 min.
 Detector Type: Mass Spectrometer
 Carrier Gas: He, 25.7 psi
 Carrier Gas Flow: 1.8 mL/min.
 Constant Flow: On
 Average Linear Velocity: 35 cm/sec at 40°C
 Injection Mode: Split
 Split Ratio: 120:1
 Injection Volume: 0.1 μ L
 Injection Temperature: 250°C
 Autosampler: No
 Liner Type: 4 mm ID Double Taper Liner
Liner Part Number: 092018
Column Part Number: 054796
 ms-NoVentTM Part no.: 113400
 HP5973 restrictor: 113409
 Full Scan / SIM: Full scan 45-450

1. p-Methyl anisole
2. α -Copaene
3. Linalool L
4. β -Caryophyllene
5. Methyl benzoate
6. α -Humulene
7. α -Amorphene
8. Germacrene
9. Benzyl acetate
10. δ -Cadinene
11. α -Farnesene
12. Geranyl acetate
13. trans-Cinamyl acetate
14. Farnesyl acetate
15. Farnesol
16. Benzyl benzoate
17. Benzyl salicylate



visit www.sge.com or contact our technical Customer Support Team on: techsupport@sge.com

SGE International Pty. Ltd.
email: support@sge.com

SGE Incorporated (USA)
email: usa@sge.com

SGE (France) Sarl
email: france@sge.com

SGE Deutschland GmbH
email: germany@sge.com

SGE Japan Inc.
email: sgejpn@itjit.ne.jp

SGE Australia Pty. Ltd.
email: sales@sge.com

SGE Europe Ltd. (UK)
email: uk@sge.com

SGE (Italia) Srl.
email: sge.italia@tin.it

SGE China Service Centre
email: sge@bj.col.com.cn

SGE India
email: sgeindia@bom4.vsnl.net.in