

FRA/FLA 14

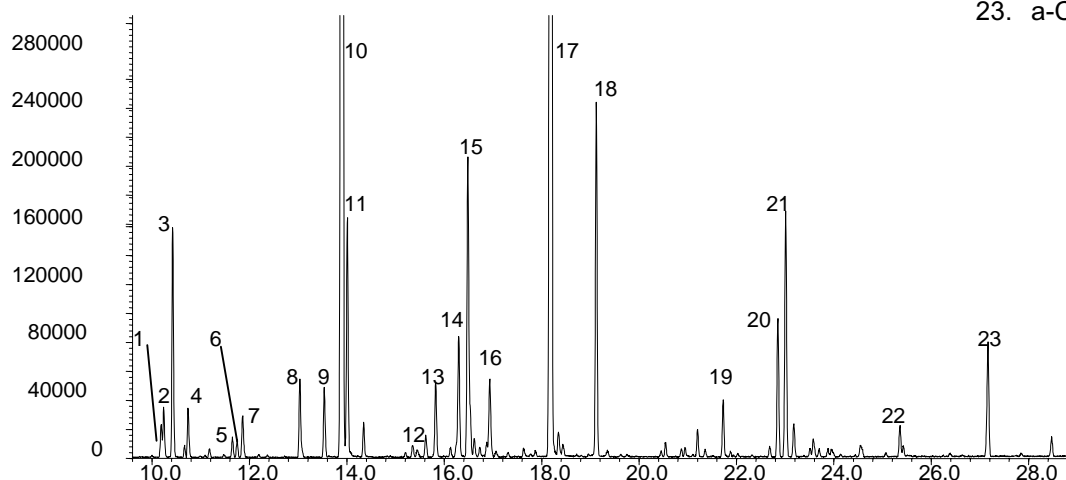
FLAVOURS/FRAGRANCES

Analysis of Lavender Oil

Phase: BPX5 0.25µm film
Lavender oil : Lavender Oil in ethanol
Column: 30m x 0.25 mm ID
Initial Temp: 40°C, 1 min.
Rate 1: 5°C/min to 200°C,
Final Temp: 260°C
Detector Type: MSD
Carrier Gas: He, 7.0 psi
Carrier Gas Flow: 1.0 mL/min.
Constant Flow: On
Average Linear Velocity: 36 cm/sec at 40°C
Injection Mode: Split
Split Ratio: 200:1
Purge on (Split) Vent Flow: 200mL/min.
Injection Volume: 0.2 µL
Injection Temperature: 250°C
Autosampler: No
Liner Type: 4 mm ID Double Taper Liner
Liner Part Number: 092018
Column Part Number: 054101

Components

1. b-Pinene
2. 1-Octen-3-ol
3. 3-Octanone
4. 3-Octanol
5. P-Cymene
6. Limonene
7. cis Ocimene
8. cis Linaloxide
9. Trans Linalool oxide
10. Linalool L
11. Octenyl acetate
12. Camphor
13. Lavandulol
14. Borneol L
15. Terpinen-4-ol
16. a -Terpineol
17. Linalyl acetate
18. Lavundyl Acetate
19. Geranyl Acetate
20. a -Santalene
21. b-Caryophyllene
22. a-Cadinene
23. a-Caryophyllene oxide



visit www.sge.com or contact our technical Customer Support Team on: techsupport@sge.com

SGE International Pty. Ltd.
email: support@sge.com

SGE, Incorporated (USA)
email: usa@sge.com

SGE (Italia) Srl.
email: sge.italia@tin.it

SGE China Service Centre
email: sge@bj.col.com.cn

SGE India
email: sgeindia@vsnl.com

SGE Europe Ltd. (UK)
email: uk@sge.com

SGE (France) Sarl
email: france@sge.com

SGE Deutschland GmbH
email: germany@sge.com

SGE Japan Inc.
email: japan@sge.com