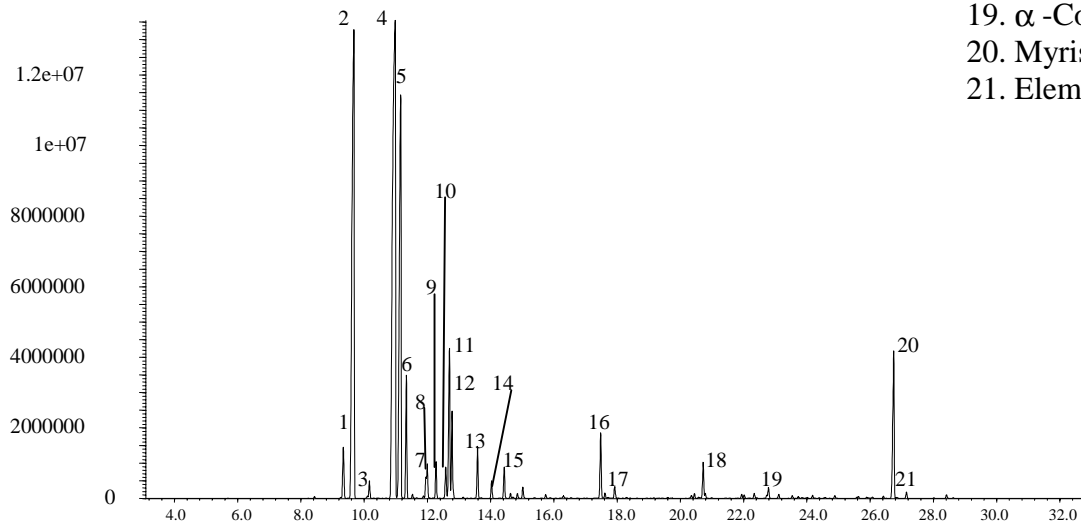


Analysis of Nutmeg Oil on BPX5

Phase: BPX5, 0.25µm film
16 Pyrethroids: 10ppm in methanol
Column: 30m x 0.25 mm ID
Initial Temp: 40°C, 1 min.
Rate: 5°C/min to 260°C,
Final Temp: 260°C
Detector Type: Mass Spectrometer
Carrier Gas: He, 7.0 psi
Carrier Gas Flow: 1.0 mL/min.
Constant Flow: On
Average Linear Velocity: 36 cm/sec at 40°C
Injection Mode: Split
Split Ratio: 200:1
Purge on (Split) Vent Flow: 200mL/min.
Injection Volume: 0.2 µL
Injection Temperature: 250°C
Autosampler: No
Liner Type: 4 mm ID Double Taper Liner
Liner Part Number: 092018
Column Part Number: 054101

Components

1. α-Thujene
2. α-Pinene
3. Camphene
4. Sabinene
5. β-Pinene
6. Myrcene
7. α -Phellandrene
8. δ-3-Carene
9. α -Terpinene
10. p-Cymene
11. Limonene
12. β -Phellandrene
13. γ-Terpinene
14. trans-Sabinene hydrate
15. α -Terpinolene
16. Terpinen-4-ol
17. 1- -Terpineol
18. Safrole
19. α -Copaene
20. Myristicin
21. Elemicin



visit www.sge.com or contact our technical Customer Support Team on: techsupport@sge.com

SGE International Pty. Ltd.
email: support@sge.com

SGE Incorporated (USA)
email: usa@sge.com

SGE (France) Sarl
email: france@sge.com

SGE Deutschland GmbH
email: germany@sge.com

SGE Japan Inc.
email: sgejpn@itjit.ne.jp

SGE Australia Pty. Ltd.
email: sales@sge.com

SGE Europe Ltd. (UK)
email: uk@sge.com

SGE (Italia) Srl.
email: sge.italia@tin.it

SGE China Service Centre
email: sge@bj.col.com.cn

SGE India
email: sgeindia@bom4.vsnl.net.in