

## Analysis of Rosemary Essential Oil on BPX5

### ANALYSIS OF ROSEMARY ESSENTIAL OIL

Phase: BPX5, 0.25µm film

Column: 30 x 0.25mm ID

Initial Temp: 45°C

Initial Hold Time: 1 min.

Rate 1: 5°C/min

Temp 2: 250°C

Temp 1 Hold Time: 15 min

Detector: 5973 MSD

Injector Mode: Split (50:1)

Injector Temp: 250°C

Carrier Gas: Helium, 35 cm/sec @ 45°C

Injection Volume: 1µL

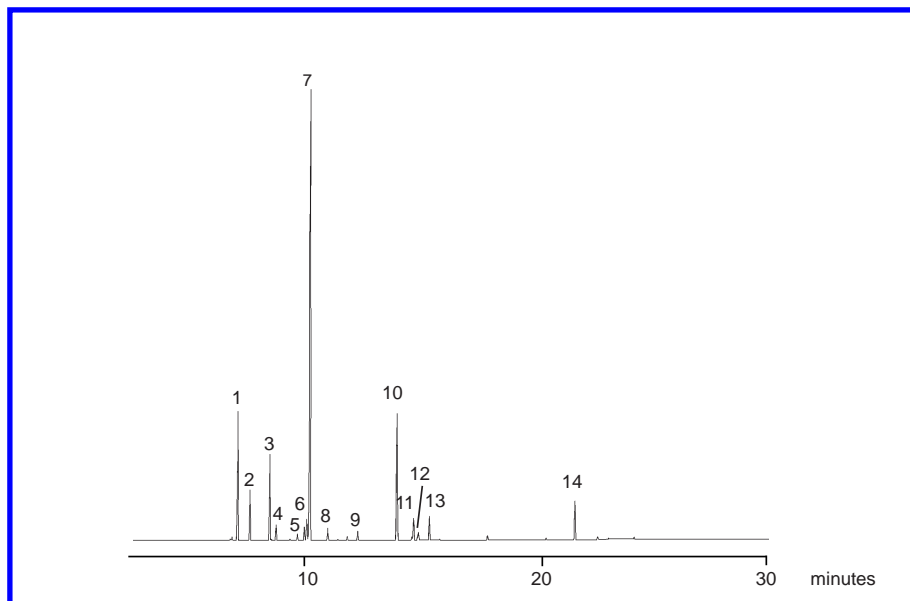
Concentration (ng/mL) 1:20 dilution in DCM

GC model: HP 6890 GC, 5973 MSD

Interface/Source/Quad: 320°C, 250°C, 106°C

SGE Part No.: 054101

1. alpha-Pinene
2. Camphene
3. beta-Pinene
4. beta-Myrcene
5. p-Cymene
6. Limonene
7. 1,8-Cineole
8. gamma-Terpinene
9. Linalool L
10. Camphor
11. 1-Borneol
12. Terpinene-4-ol
13. alpha-Terpineol
14. trans-Caryophyllene



visit [www.sge.com](http://www.sge.com) or contact our technical Customer Support Team on: [techsupport@sge.com](mailto:techsupport@sge.com)

SGE International Pty. Ltd.  
email: support@sge.com

SGE Incorporated (USA)  
email: usa@sge.com

SGE (France) Sarl  
email: france@sge.com

SGE Deutschland GmbH  
email: germany@sge.com

SGE Japan Inc.  
email: sgejpn@itjit.ne.jp

SGE Australia Pty. Ltd.  
email: sales@sge.com

SGE Europe Ltd. (UK)  
email: uk@sge.com

SGE (Italia) Srl.  
email: sge.italia@tin.it

SGE China Service Centre  
email: sge@bj.col.com.cn

SGE India  
email: sgeindia@bom4.vsnl.net.in