

FRA/FLA 08

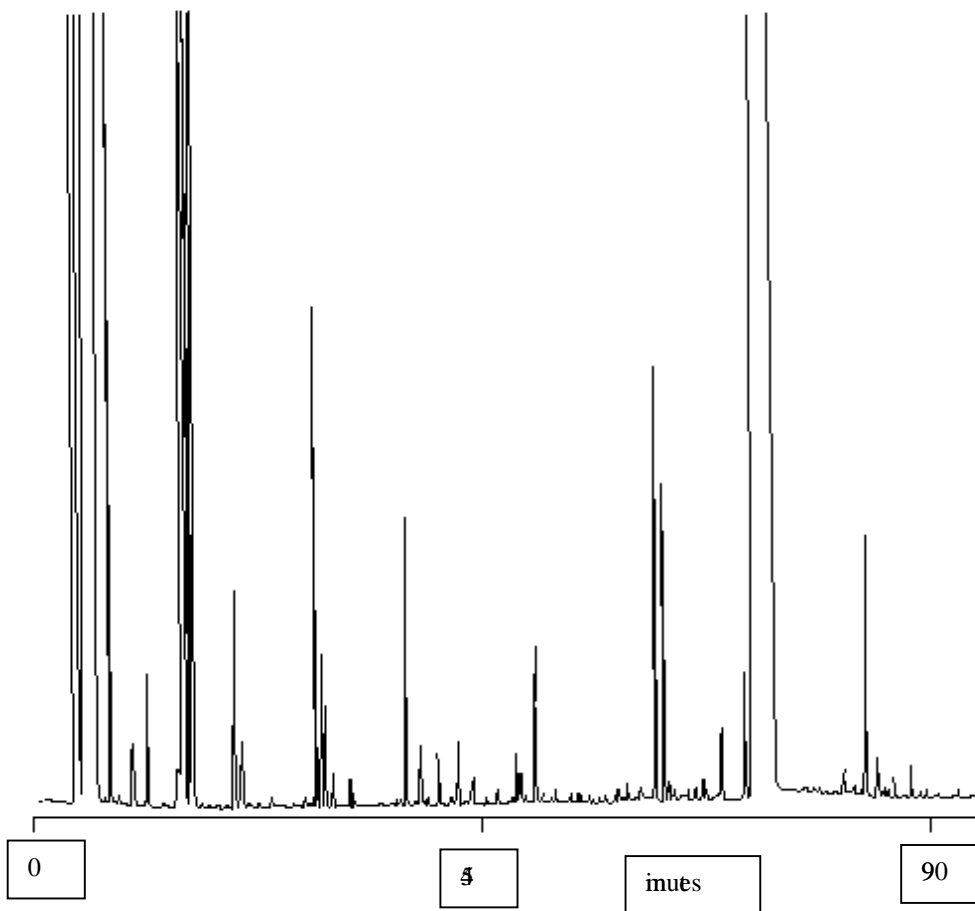
FLAVOURS/FRAGRANCES

Analysis of Raspberry Flavours on BPX5

Keywords

Flavours
Raspberry

Part No.: 054114
Phase: BPX5, 0.25µm film
Column: 50 m x 0.22 mm ID
Initial Temp: 60°C, 10 min
Rate: 2°C/min
Final Temp: 250°C, 10 min
Injector Temp: 240°C
Injector Mode: Split
Detector: FID 320°C
Carrier Gas: Helium, 25psi



visit www.sge.com or contact our technical Customer Support Team on: techsupport@sge.com

SGE International Pty. Ltd.
email:support@sge.com
SGE Australia Pty. Ltd.
email:sales@sge.com

SGE Incorporated (USA)
email:usa@sge.com
SGE Europe Ltd. (UK)
email:uk@sge.com

SGE (France) Sarl
email:france@sge.com
SGE (Italia) Srl.
email:sge.italia@tin.it

SGE Deutschland GmbH
email:germany@sge.com
SGE China Service Centre
email:sge@bj.col.com.cn

SGE Japan Inc.
email:sgejpn@itjit.ne.jp
SGE India
email:sgeindia@bom4.vsnl.net.in