

FRA/FLA 04
FLAVOURS/FRAGRANCES

Analysis of Lavender Oil on CYDEX-B

KEYWORDS:

Lavender Oil

Linalool

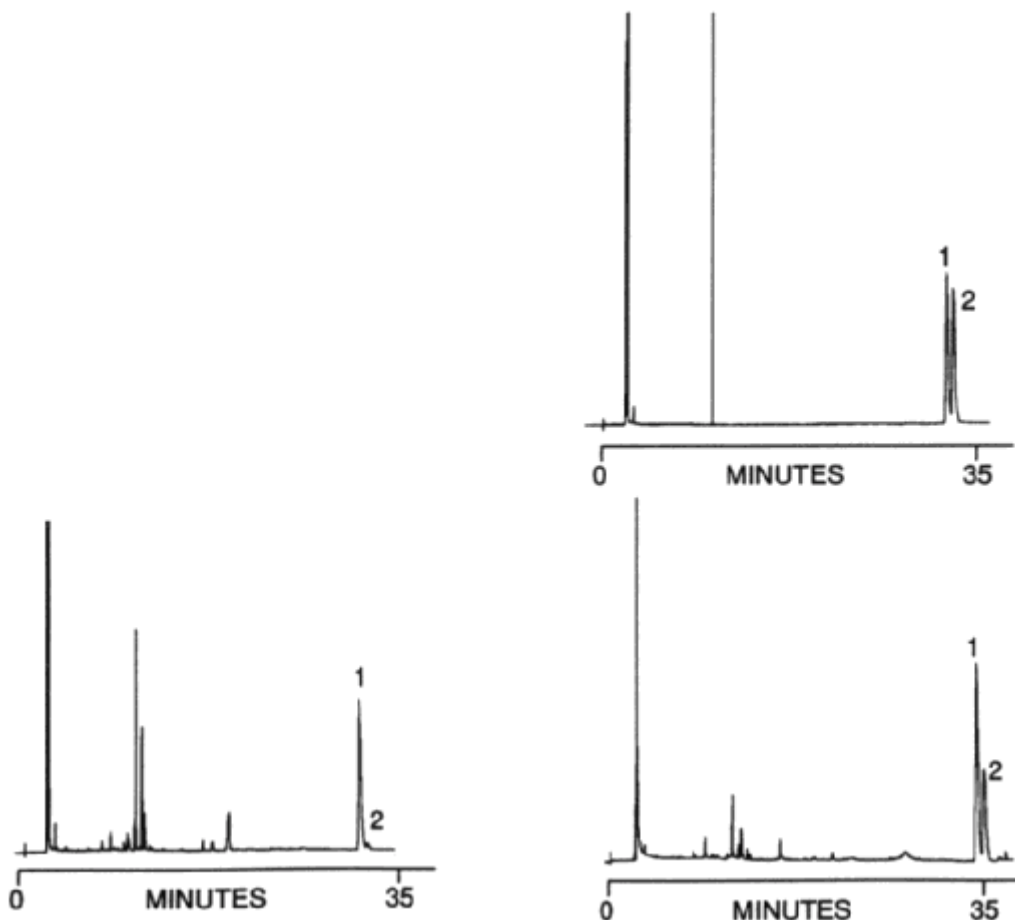
LAVENDER OIL

Part No.: 054901
Phase: CYDEX-B-0.25µm film
Column: 50m x 0.22mm ID
Initial Temp: Isothermal at 90°C
Detector: FID
Sensitivity: 32 x 10⁻¹² AFS
Injection Mode: Split

Notes: The Cydex - B column enables easy detection of adulteration of Lavender oils

Components

1. (+) Linalool
2. (-) Linalool



visit www.sge.com or contact our technical Customer Support Team on: techsupport@sge.com

SGE International Pty. Ltd.
email: support@sge.com

SGE Incorporated (USA)
email: usa@sge.com

SGE (France) Sarl
email: france@sge.com

SGE Deutschland GmbH
email: germany@sge.com

SGE Japan Inc.
email: sgejpn@itjit.ne.jp

SGE Australia Pty. Ltd.
email: sales@sge.com

SGE Europe Ltd. (UK)
email: uk@sge.com

SGE (Italia) Srl.
email: sge.italia@tin.it

SGE China Service Centre
email: sge@bj.col.com.cn

SGE India
email: sgeindia@bom4.vsnl.net.in