

**FRA/FLA 03**  
**FLAVOURS/FRAGRANCES**

## Analysis of Orris Concentrate on BP20

### KEYWORDS:

Orris Concentrate

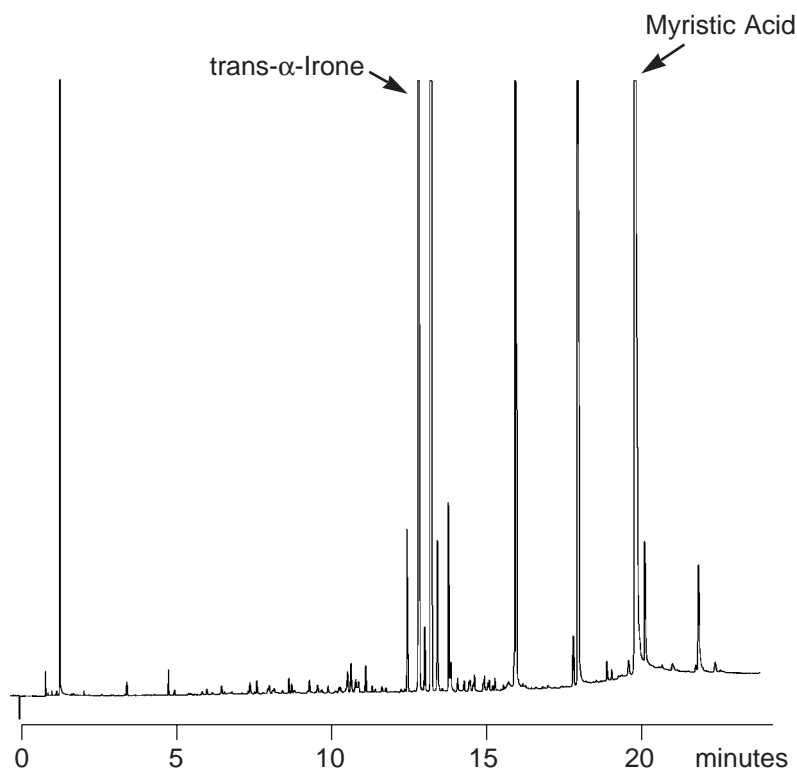
$\alpha$ -IRONE

Enantiomer Separation

Chiral Separation

### ORRIS CONCENTRATE

Part No.: 054436  
Column: BP20, 0.5 $\mu$ m  
Phase: 25m x 0.32mm I.D.  
Initial Temp.: 70°C, 1min  
Rate: 10°C/min  
Final Temp.: 250°C, 10min  
Carrier Gas: Helium  
Carrier Pressure: 10psi  
Injection Mode: Split 50:1



visit [www.sge.com](http://www.sge.com) or contact our technical Customer Support Team on: [techsupport@sge.com](mailto:techsupport@sge.com)

SGE International Pty. Ltd.  
email: support@sge.com

SGE Incorporated (USA)  
email: usa@sge.com

SGE (France) Sarl  
email: france@sge.com

SGE Deutschland GmbH  
email: germany@sge.com

SGE Japan Inc.  
email: sgejpn@itjit.ne.jp

SGE Australia Pty. Ltd.  
email: sales@sge.com

SGE Europe Ltd. (UK)  
email: uk@sge.com

SGE (Italia) Srl.  
email: sge.italia@tin.it

SGE China Service Centre  
email: sge@bj.col.com.cn

SGE India  
email: sgeindia@bom4.vsnl.net.in