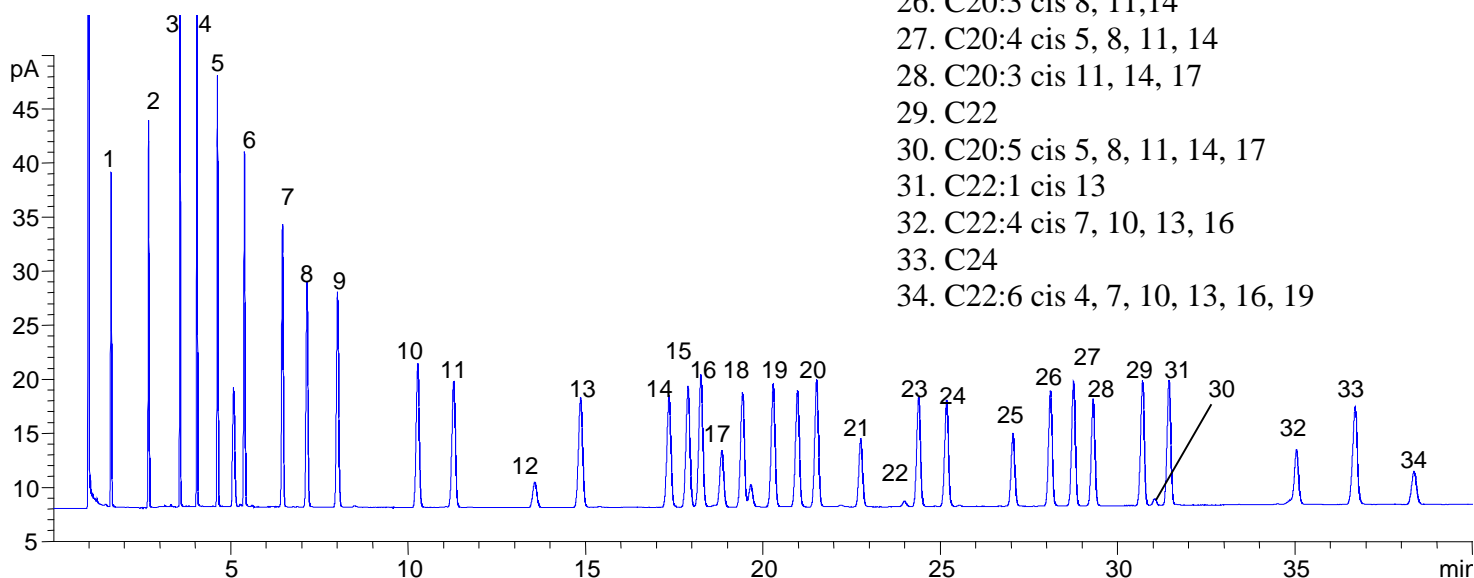


## Analysis of FAME compounds on a BPX70

**Phase:** BPX70, 0.25 $\mu$ m film  
**Sample:** 100ppm in hexane  
**Column:** 25m x 0.32 mm ID  
**Initial Temp:** 80°C, 2 min.  
**Rate 1:** 50°C/min to 130°C, 10 min  
**Rate 2:** 2°C/min to 172°C,  
**Final Temp:** 172°C, 6 min.  
**Detector Type:** FID  
**Detector Temp:** 300°C  
**Carrier Gas:** He, 11.8 psi  
**Carrier Gas Flow:** 2.2 mL/min.  
**Constant Flow:** On  
**Average Linear Velocity:** 38 cm/sec at 80°C  
**Injection Mode:** Split  
**Split Ratio:** 58:1  
**Injection Volume:** 0.4  $\mu$ L  
**Injection Temperature:** 250°C  
**Autosampler:** No  
**Liner Type:** 4 mm ID FocusLiner  
**Liner Part Number:** 092002  
**Column Part Number:** 054606

**Components**  
 1. C6  
 2. C8  
 3. C10  
 4. C11  
 5. C12  
 6. C13  
 7. C14  
 8. C14:1 cis 9  
 9. C15  
 10. C16  
 11. C16:1 cis 9  
 12. C17  
 13. C17:1 cis 10  
 14. C18  
 15. C18:1 trans 9  
 16. C18:1 cis 9  
 17. C18:1 cis 12  
 18. C18:2 trans 9, 12  
 19. C18:2 cis 9, 12  
 20. C18:3 cis 6, 9, 12  
 21. C18:3 cis 9, 12, 15  
 22. C18:4 Cis 6, 9, 12, 15  
 23. C20  
 24. C21:1 cis 11  
 25. C20:2 cis 11,14  
 26. C20:3 cis 8, 11,14  
 27. C20:4 cis 5, 8, 11, 14  
 28. C20:3 cis 11, 14, 17  
 29. C22  
 30. C20:5 cis 5, 8, 11, 14, 17  
 31. C22:1 cis 13  
 32. C22:4 cis 7, 10, 13, 16  
 33. C24  
 34. C22:6 cis 4, 7, 10, 13, 16, 19



SGE would like to thank Masterfoods UK for supplying the chromatogram and conditions for this application note.