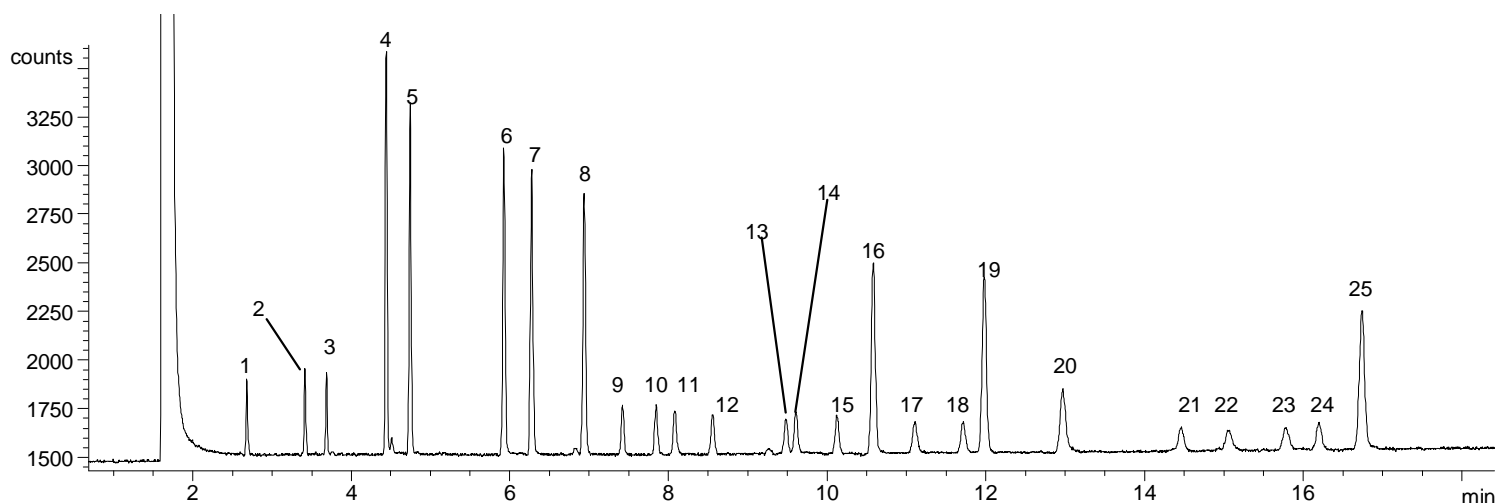


FAM 28

Fatty Acid Methyl Esters

Analysis of a 24 Component FAME Mixture on BPX70

Phase:	BPX70, 0.25µm film	Components
Sample:	100ppm in Hexane	1. C12:0
Column:	30m x 0.25 mm ID	2. C14:0
Initial Temp:	150°C, 0.5 min.	3. C14:1W5
Rate 1:	10°C/min to 180°C,	4. C16:0
Rate 2:	1.5°C/min to 220°C	5. C16:1W7
Rate 3:	30°C/min to 260°C	6. C18:0
Final Temp:	260°C, 5 min.	7. C18:1W9
Detector Type:	FID	8. C18:2W6
Detector Temp:	280°C	9. C18:3W6
Carrier Gas:	He, 20.7 psi	10. C18:3W3
Carrier Gas Flow:	1.3 mL/min.	11. C20:0
Constant Flow:	On	12. C20:1W9
Average Linear Velocity:	35 cm/sec at 150°C	13. C20:2W6
Injection Mode:	Split	14. C20:3W9
Split Ratio:	15:1	15. C20:3W6
Injection Volume:	1 µL	16. C20:4W6
Injection Temperature:	250°C	17. C22:0
Autosampler:	No	18. C22:1W9
Liner Type:	4 mm ID Single Taper Liner	19. C20:5W3
Liner Part Number:	092017	20. Unknown
Column Part Number:	054622	21. C22:4W6
		22. C24:0
		23. C24:1W9
		24. C22:5W3
		25. C22:6W3



visit www.sge.com or contact our technical Customer Support Team on: techsupport@sge.com

SGE International Pty. Ltd.
email: support@sge.com

SGE Incorporated (USA)
email: usa@sge.com

SGE (France) Sarl
email: france@sge.com

SGE Deutschland GmbH
email: germany@sge.com

SGE Japan Inc.
email: sgejpn@itjit.ne.jp

SGE Australia Pty. Ltd.
email: sales@sge.com

SGE Europe Ltd. (UK)
email: uk@sge.com

SGE (Italia) Srl.
email: sge.italia@tin.it

SGE China Service Centre
email: sge@bj.col.com.cn

SGE India
email: sgeindia@bom4.vsnl.net.in