

FAM 25

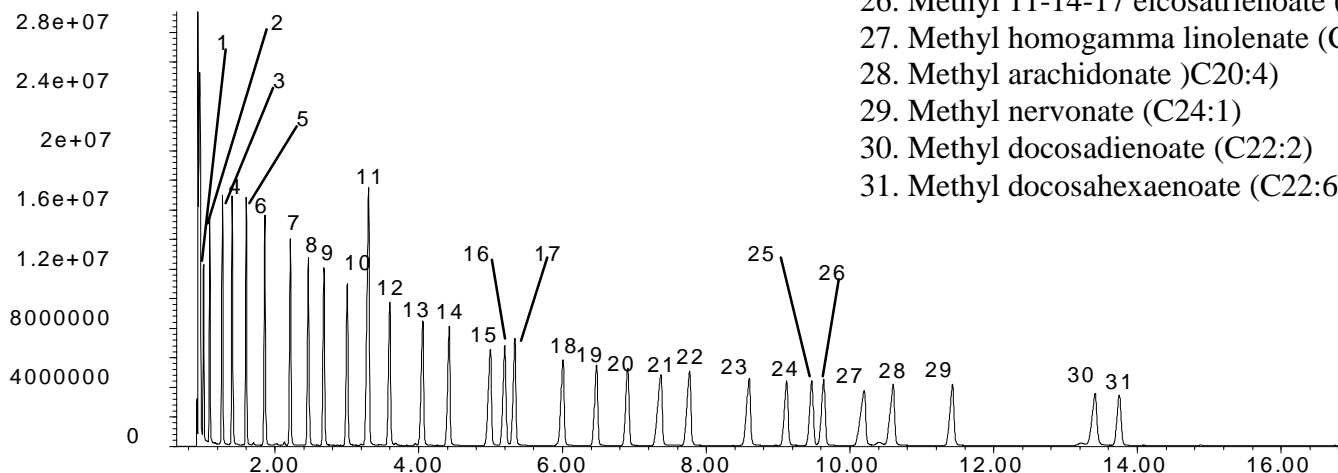
Fatty Acid Methyl Ester

FAME reference standard on BPX70

Phase: BPX70 0.25µm film
Sample: 200ppm in dichloromethane
Column: 25m x 0.22 mm ID
Initial Temp: 155°C,
Rate 1: 2°C/min to 180°C,
Rate 2: 4°C/min to 220°C
Final Temp: 220°C, 5 min.
Detector Type: MSD
Carrier Gas: He, 35.3psi
Carrier Gas Flow: 1.6 mL/min.
Constant Flow: On
Average Linear Velocity: 35 cm/sec at 155°C
Injection Mode: Split
Split Ratio: 80:1
Injection Volume: 0.5 µL
Injection Temperature: 250°C
Autosampler: No
Liner Type: 4 mm ID Double Taper Liner
Liner Part Number: 092018
Column Part Number: 054602
ms-NoVent™ Part no.: 113400
HP5973 restrictor: 113409
Full Scan / SIM: Full scan 45-450

Components

1. Methyl butyrate (C4:0)
2. Methyl hexanoate (C6:0)
3. Methyl octanoate (C8:0)
4. Methyl decanoate (C10:0)
5. Methyl undecanoate (C11:0)
6. Methyl laurate (C12:0)
7. Methyl tridecanoate (C13:0)
8. Methyl myristate (C14:0)
9. Methyl myristoleate (C14:1)
10. Methyl pentadecanoate (C15:0)
11. Methyl 10-entadecenoate (C15:1)
12. Methyl palmitate (C16:0)
13. Methyl palmitoleate (C16:1)
14. Methyl heptadecanoate (C17:0)
15. Methyl stearate (C18:0)
16. Methyl oleate (C18:1)
17. Methyl elaidate (C18:1T)
18. Methyl linoleate (C18:2)
19. Methyl linolenate (C18:3)
20. Methyl gamma linolenate (C18:3)
21. Methyl arachidate (C20:0)
22. Methyl 11-eicosenoate (C20:1)
23. Methyl 11-14-eicosadienoate (C20:2)
24. Methyl behenate (C22:0)
25. Methyl erucate (C22:1)
26. Methyl 11-14-17 eicosatrienoate (C20:3)
27. Methyl homogamma linolenate (C20:3)
28. Methyl arachidonate (C20:4)
29. Methyl nervonate (C24:1)
30. Methyl docosadienoate (C22:2)
31. Methyl docosahexaenoate (C22:6)



visit www.sge.com or contact our technical Customer Support Team on: techsupport@sge.com

SGE International Pty. Ltd.
email: support@sge.com

SGE, Incorporated (USA)
email: usa@sge.com

SGE (Italia) Srl.
email: sge.italia@tin.it

SGE China Service Centre
email: sge@bj.col.com.cn

SGE India
email: sgeindia@vsnl.com

SGE Europe Ltd. (UK)
email: uk@sge.com

SGE (France) Sarl
email: france@sge.com

SGE Deutschland GmbH
email: germany@sge.com

SGE Japan Inc.
email: japan@sge.com