

## FAM 24

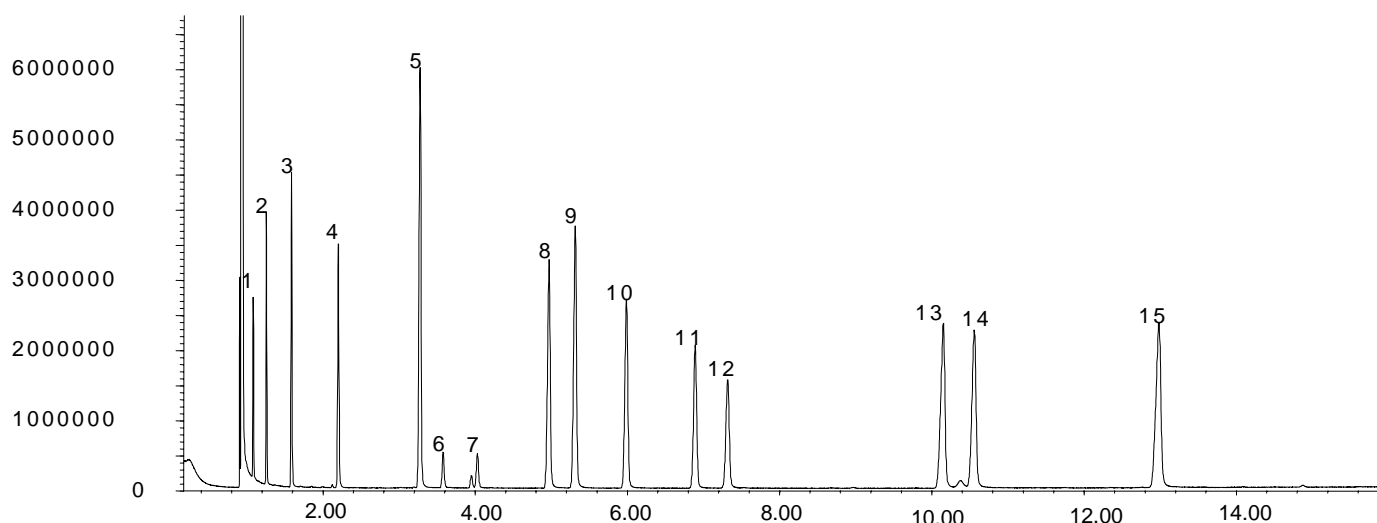
### FATTY ACID METHYL ESTERS

## FAME Standards on BPX70

**Phase:** BPX70, 0.25µm film  
**Sample:** 300ppm in dichloromethane  
**Column:** 25m x 0.22 mm ID  
**Initial Temp:** 155°C,  
**Rate 1:** 2°C/min to 180°C,  
**Rate 2:** 4°C/min to 220°C  
**Final Temp:** 220°C, 5 min.  
**Detector Type:** MSD  
**Carrier Gas:** He, 35.3psi  
**Carrier Gas Flow:** 1.6 mL/min.  
**Constant Flow:** On  
**Average Linear Velocity:** 35 cm/sec at 155°C  
**Injection Mode:** Split  
**Split Ratio:** 80:1  
**Injection Volume:** 0.2 µL  
**Injection Temperature:** 250°C  
**Autosampler:** No  
**Liner Type:** 4 mm ID Double Taper Liner  
**Liner Part Number:** 092018  
**Column Part Number:** 054602  
**ms-NoVent™ Part no.:** 113400  
**HP5973 restrictor:** 113409  
**Full Scan / SIM:** Full scan 45-450

### Components

1. Methyl octanoate (C8:0)
2. Methyl decanoate (C10:0)
3. Methyl laurate (C12:0)
4. Methyl myristate (C14:0)
5. Methyl palmitate (C16:0)
6. Methyl palmitoleate (C16:1)
7. Methyl heptadecanoate (C17:0)
8. Methyl stearate (C18:0)
9. Methyl oleate (C18:1)
10. Methyl linoleate (C18:2)
11. Methyl linolenate (C18:3)
12. Methyl arachidate (C20:0)
13. Methyl behenate (C22:0)
14. Methyl erucate (C22:1)
15. Methyl lignocerate (C24:0)



visit [www.sge.com](http://www.sge.com) or contact our technical Customer Support Team on: [techsupport@sge.com](mailto:techsupport@sge.com)

SGE International Pty. Ltd.  
email: support@sge.com

SGE Australia Pty. Ltd.  
email: sales@sge.com

SGE Incorporated (USA)  
email: usa@sge.com

SGE Europe Ltd. (UK)  
email: uk@sge.com

SGE (France) Sarl  
email: france@sge.com

SGE (Italia) Srl.  
email: sge.italia@tin.it

SGE Deutschland GmbH  
email: germany@sge.com

SGE China Service Centre  
email: sge@bj.col.com.cn

SGE Japan Inc.  
email: sgejpn@itjit.ne.jp

SGE India  
email: sgeindia@bom4.vsnl.net.in