

FAM 23

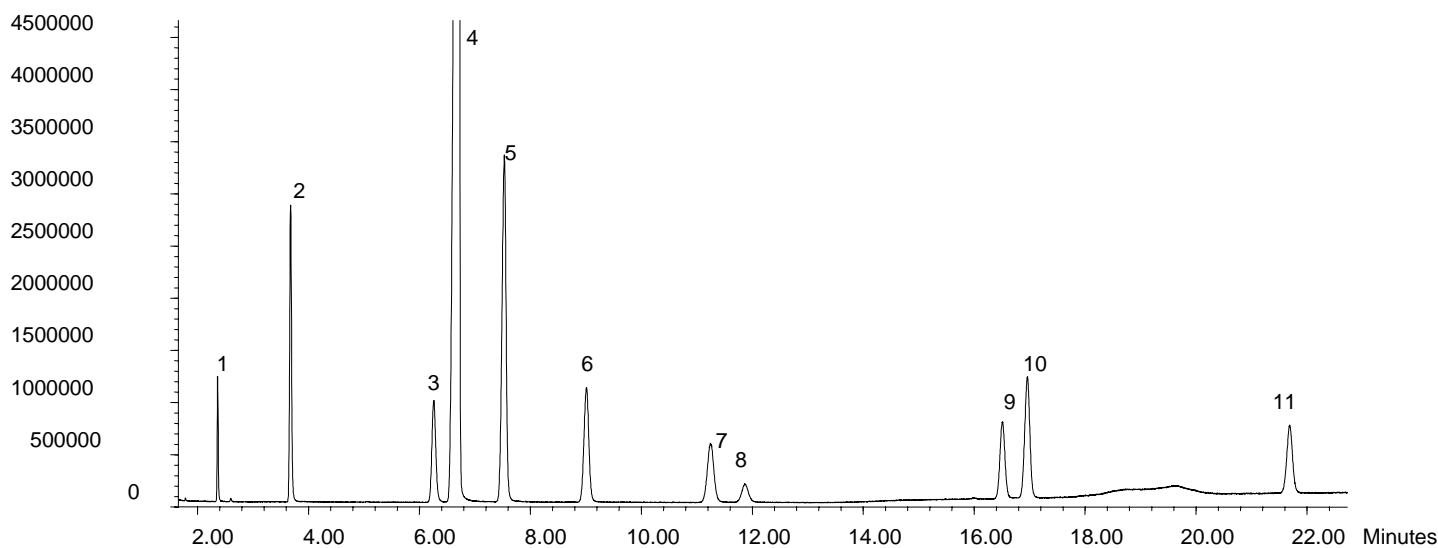
FATTY ACID METHYL ESTERS

Analysis of Rapeseed Oil on SolGel-Wax™

Phase: SolGel-Wax™, 0.25 µm film
Sample: 200ppm in dichloromethane
Column: 30m x 0.25 mm ID
Initial Temp: 195°C, 13 min,
Rate 1: 20°C/min to 220°C, 5 min,
Rate 2: 20°C/min to 230°C
Final Temp: 230°C, 5 min.
Detector Type: MSD
Carrier Gas: He, 39.2psi
Carrier Gas Flow: 1.6 mL/min.
Constant Flow: On
Average Linear Velocity: 35 cm/sec at 195°C
Injection Mode: Split
Split Ratio: 80:1
Injection Volume: 0.5 µL
Injection Temperature: 250°C
Autosampler: No
Liner Type: 4 mm ID Double Taper Liner
Liner Part Number: 092018
Column Part Number: 054796
ms-NoVent™ Part no.: 113400
HP5973 restrictor: 113409
Full Scan / SIM: Full scan 45-450

Components

1. Methyl Myristate (C14:0)
2. Methyl Palmitate (C16:0)
3. Methyl Stearate (C18:0)
4. Methyl Oleate (C18:1)
5. Methyl Linoleate (C18:2)
6. Methyl Linolenate (C18:3)
7. Methyl Arachidate (C20:0)
8. Methyl Eicosenoate (C20:1)
9. Methyl Behenate (C22:0)
10. Methyl Erucate (C22:1)
11. Methyl Lignocerate (C24:0)



visit www.sge.com or contact our technical Customer Support Team on: techsupport@sge.com

SGE International Pty. Ltd.
email:support@sge.com

SGE Incorporated (USA)
email:usa@sge.com

SGE (France) Sarl
email:france@sge.com

SGE Deutschland GmbH
email:germany@sge.com

SGE Japan Inc.
email:sgejpn@itjit.ne.jp

SGE Australia Pty. Ltd.
email:sales@sge.com

SGE Europe Ltd. (UK)
email:uk@sge.com

SGE (Italia) Srl.
email:sge.italia@tin.it

SGE China Service Centre
email:sge@bj.col.com.cn

SGE India
email:sgeindia@bom4.vsnl.net.in