

FAM 22

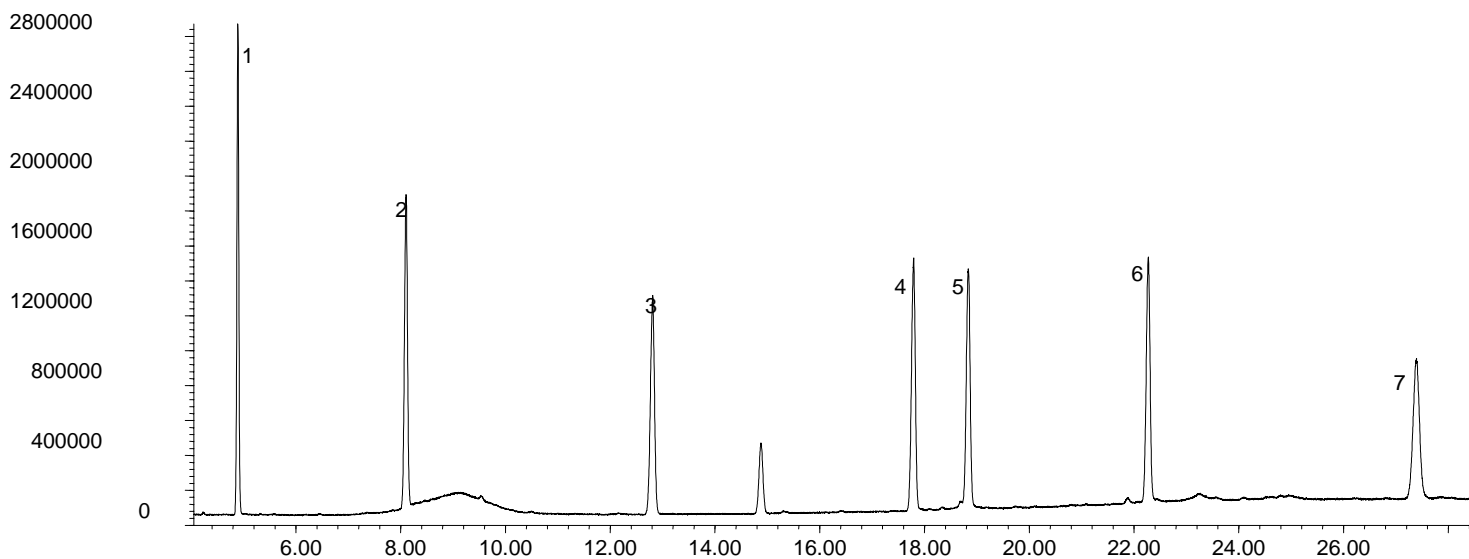
FATTY ACID METHYL ESTERS

C13-C23 FAME Standard on SolGel-Wax™

Phase: SolGel-Wax, 0.25µm film
Sample: 200ppm in dichloromethane
Column: 30m x 0.25 mm ID
Initial Temp: 155°C,
Rate 1: 2°C/min to 180°C,
Rate 2: 4°C/min to 220°C
Final Temp: 220°C, 5 min.
Detector Type: MSD
Carrier Gas: He, 35.3psi
Carrier Gas Flow: 1.6 mL/min.
Constant Flow: On
Average Linear Velocity: 35 cm/sec at 155°C
Injection Mode: Split
Split Ratio: 80:1
Injection Volume: 0.5 µL
Injection Temperature: 250°C
Autosampler: No
Liner Type: 4 mm ID Double Taper Liner
Liner Part Number: 092018
Column Part Number: 054796
ms-NoVent™ Part no.: 113400
HP5973 restrictor: 113409
Full Scan / SIM: Full scan 45-450

Components

1. Methyl 12-tridecenoate (C13:1)
2. Methyl 10-pentadecenoate (C15:1)
3. Methyl 10-heptadecenoate (C17:1)
4. Methyl 10-nonadecenoate (C19:1)
5. Methyl 10-13 nonadecadienoate (C19:2)
6. Methyl 12-heneicosenoate (C21:1)
7. Methyl 14-tricosenoate (C23:1)



visit www.sge.com or contact our technical Customer Support Team on: techsupport@sge.com

SGE International Pty. Ltd.
email: support@sge.com

SGE Incorporated (USA)
email: usa@sge.com

SGE (France) Sarl
email: france@sge.com

SGE Deutschland GmbH
email: germany@sge.com

SGE Japan Inc.
email: sgejpn@ijit.ne.jp

SGE Australia Pty. Ltd.
email: sales@sge.com

SGE Europe Ltd. (UK)
email: uk@sge.com

SGE (Italia) Srl.
email: sge.italia@tin.it

SGE China Service Centre
email: sge@bj.col.com.cn

SGE India
email: sgeindia@bom4.vsnl.net.in