

## FAM 21

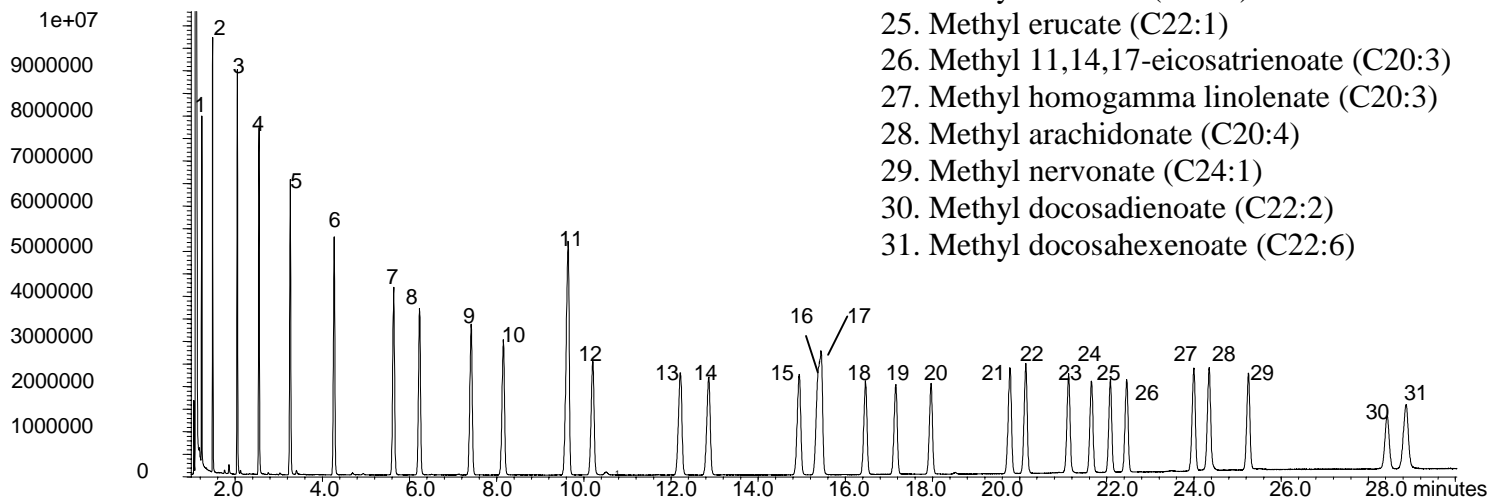
## FAME Reference Standard on SolGel-Wax™

### FATTY ACID METHYL ESTERS

**Phase:** SolGel-Wax™, 0.25µm film  
**Sample:** 200ppm in dichloromethane  
**Column:** 30m x 0.25 mm ID  
**Initial Temp:** 155°C,  
**Rate 1:** 2°C/min to 180°C,  
**Rate 2:** 4°C/min to 220°C  
**Final Temp:** 220°C, 5 min.  
**Detector Type:** MSD  
**Carrier Gas:** He, 35.3psi  
**Carrier Gas Flow:** 1.6 mL/min.  
**Constant Flow:** On  
**Average Linear Velocity:** 35 cm/sec at 155°C  
**Injection Mode:** Split  
**Split Ratio:** 80:1  
**Injection Volume:** 0.5 µL  
**Injection Temperature:** 250°C  
**Autosampler:** No  
**Liner Type:** 4 mm ID Double Taper Liner  
**Liner Part Number:** 092018  
**Column Part Number:** 054796  
**ms-NoVent™ Part no.:** 113400  
**HP5973 restrictor:** 113409  
**Full Scan / SIM:** Full scan 45-450

### Components

1. Methyl butyrate (C4:0)
2. Methyl hexanoate (C6:0)
3. Methyl octanoate (C8:0)
4. Methyl decanoate (C10:0)
5. Methyl undecanoate (C11:0)
6. Methyl laurate (C12:0)
7. Methyl tridecanoate (C13:0)
8. Methyl myristate (C14:0)
9. Methyl myristoleate (C14:1)
10. Methyl pentadecanoate (C15:0)
11. Methyl 10-pentadecenoate (C15:1)
12. Methyl palmitate (C16:0)
13. Methyl palmitoleate (C16:1)
14. Methyl heptadecanoate (C17:0)
15. Methyl stearate (C18:0)
16. Methyl oleate (C18:1)
17. Methyl elaidate (C18:1T)
18. Methyl linoleate (C18:2)
19. Methyl linolenate (C18:3)
20. Methyl gamma linolenate (C18:3)
21. Methyl arachidate (C20:0)
22. Methyl 11-eicosenoate (C20:1)
23. Methyl 11,14-eicosadienoate (C20:2)
24. Methyl behenate (C22:0)
25. Methyl erucate (C22:1)
26. Methyl 11,14,17-eicosatrienoate (C20:3)
27. Methyl homogamma linolenate (C20:3)
28. Methyl arachidonate (C20:4)
29. Methyl nervonate (C24:1)
30. Methyl docosadienoate (C22:2)
31. Methyl docosahexenoate (C22:6)



visit [www.sge.com](http://www.sge.com) or contact our technical Customer Support Team on: [techsupport@sge.com](mailto:techsupport@sge.com)

SGE International Pty. Ltd.  
email:support@sge.com

SGE Incorporated (USA)  
email:usa@sge.com

SGE (France) Sarl  
email:france@sge.com

SGE Deutschland GmbH  
email:germany@sge.com

SGE Japan Inc.  
email:sgejpn@itjit.ne.jp

SGE Australia Pty. Ltd.  
email:sales@sge.com

SGE Europe Ltd. (UK)  
email:uk@sge.com

SGE (Italia) Srl.  
email:sge.italia@tin.it

SGE China Service Centre  
email:sge@bj.col.com.cn

SGE India  
email:sgeindia@bom4.vsnl.net.in