

FAM 18 FATTY ACID METHYL ESTERS

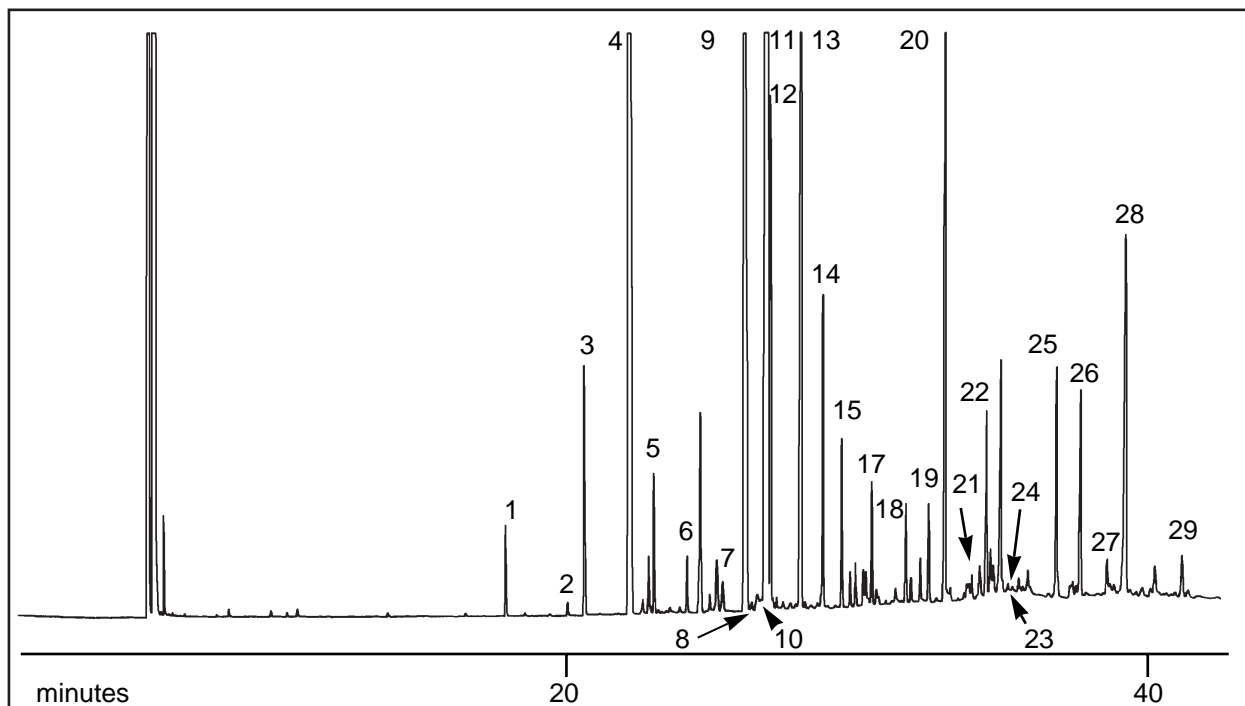
Analysis of PUFA-2:FAME on BPX70

KEYWORDS:

PUFA-2

ECL numbers of unsaturated C18 FAMES

Animal Source FAME	Peak No.	FAME	ECL#1.			
	1	C14:0	14.00	16	C20:0	20.00
	2	C15:0	15.00	17	C20:1n9	20.39
Fatty Acid Methyl Esters	3	C15:1	15.54	18	C20:2	21.06
	4	C16:0	16.00	19	C20:3n6	21.49
Part No.: 054623	5	C16:1	16.43	20	C20:3n3	21.79
Phase: BPX70, 0.25µm	6	C17:0	17.00	21	C22:1n9	22.42
Column: 60m x 0.25mm I.D.	7	C16:3n4	17.62	22	C20:5n3	22.65
Initial Temp.: 120°C	8	C18:0	18.00	23	C23:0	23.00
Rate: 3°C/min	9	C18:1n9t	18.21	24	C22:2	23.12
Final Temp.: 245°C	10	C18:1n7t	18.23	25	C24:0	24.00
Carrier Gas: He, 30 psi	11	C18:1n9c	18.37	26	C24:1	24.46
Detector: F.I.D., 280°C	12	C18:1n7c	18.47	27	C22:5n3	24.87
Gas velocity: 25cm/sec 120°C	13	C18:2n6c	19.02	28	C22:6n3	24.14
	14	C18:3n6	19.44	29	C26:0	26.00
	15	C18:3n3	19.78			



visit www.sge.com or contact our technical Customer Support Team on: techsupport@sge.com

SGE International Pty. Ltd.
email: support@sge.com

SGE Incorporated (USA)
email: usa@sge.com

SGE (France) Sarl
email: france@sge.com

SGE Deutschland GmbH
email: germany@sge.com

SGE Japan Inc.
email: sgejpn@itjit.ne.jp

SGE Australia Pty. Ltd.
email: sales@sge.com

SGE Europe Ltd. (UK)
email: uk@sge.com

SGE (Italia) Srl.
email: sge.italia@tin.it

SGE China Service Centre
email: sge@bj.col.com.cn

SGE India
email: sgeindia@bom4.vsnl.net.in