

FAM 16
FATTY ACID METHYL ESTERS

Analysis of Menhaden Oil FAME on BPX70

ECL numbers of unsaturated C18 FAMES

KEYWORDS:

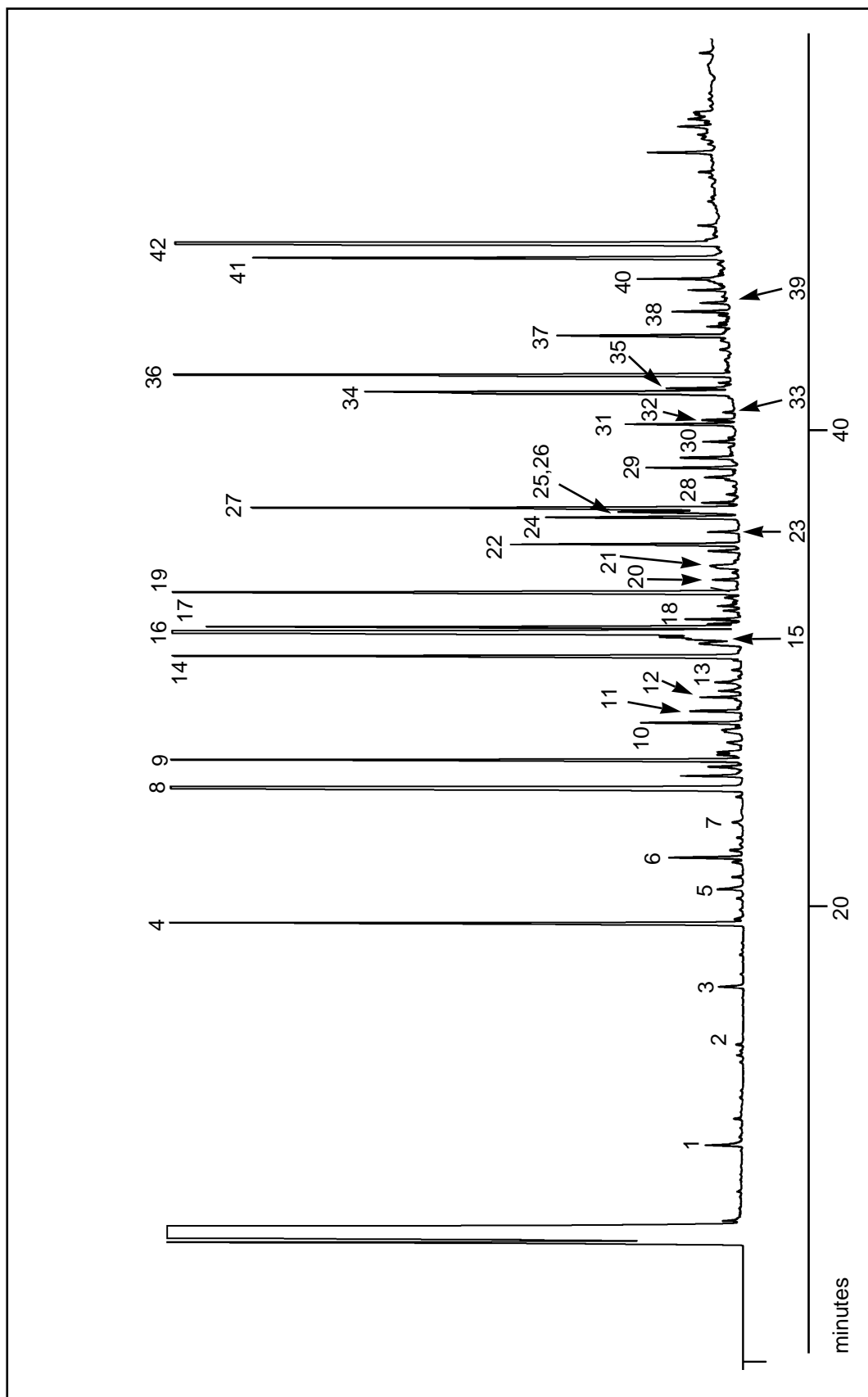
Menhaden Oil FAME

Fatty Acid Methyl Esters

Part No.: 054623
 Phase: BPX70, 0.25µm
 Column: 60m x 0.25mm I.D.
 Initial Temp.: 120°C
 Rate: 3°C/min
 Final Temp.: 245°C
 Carrier Gas: He, 30 psi
 Detector: F.I.D., 280°C
 Gas velocity: 25cm/sec 120°C

Peak No.	FAME	ECL#1.
1	C10:0	10.00
2	C12:0	12.00
3	C13:0	13.00
4	C14:0	14.00
5	C14:1	14.53
6	C15:0	15.00
7	C15:1	15.54
8	C16:0	16.00
9	C16:1	16.43
10	C17:0	17.00
11	C:16:2n4	17.18
12	C:17:1	17.44
13	C16:3n4	17.62
14	C18:0	18.00
15	C18:1n9t	18.21
16	C18:1n9c	18.37
17	C18:1n7c	18.47
18	C18:2n6t	18.65
19	C18:2n6c	19.02
20	C18:3n6	19.45
21	C18:3n4	19.69
22	C18:3n3	19.78
23	C20:0	20.00
24	C18:4n4	20.33
25	C20:1n11	20.33
26	C20:1n13	20.33
27	C20:1n9	20.39
28	C18:4n1	20.49
29	C20:2	21.06
30	C20:3n6	21.49
31	C20:3n3	21.79
32	C20:4n6	21.86
33	C22:0	22.00
34	C20:4n3	22.35
35	C22:1n9	22.42
36	C20:5n3	22.65
37	C21:5n3	23.66
38	C22:5n6	23.87
39	C24:0	24.00
40	C24:1n9	24.46
41	C22:5n3	24.87
42	C22:6n3	25.14

Analysis of Menhaden Oil FAME



visit www.sge.com or contact our technical Customer Support Team on: techsupport@sge.com

SGE International Pty. Ltd.
email: support@sge.com

SGE Incorporated (USA)
email: usa@sge.com

SGE (France) Sarl
email: france@sge.com

SGE Deutschland GmbH
email: germany@sge.com

SGE Japan Inc.
email: sgejpn@itjit.ne.jp

SGE Australia Pty. Ltd.
email: sales@sge.com

SGE Europe Ltd. (UK)
email: uk@sge.com

SGE (Italia) Srl.
email: sge.italia@tin.it

SGE China Service Centre
email: sge@bj.col.com.cn

SGE India
email: sgeindia@bom4.vsnl.net.in