

**FAM 15**  
**FATTY ACID METHYL ESTERS**

## Analysis of C18:1 cis/trans FAME on BPX70

*ECL numbers of unsaturated C18 FAMES*

**KEYWORDS:**

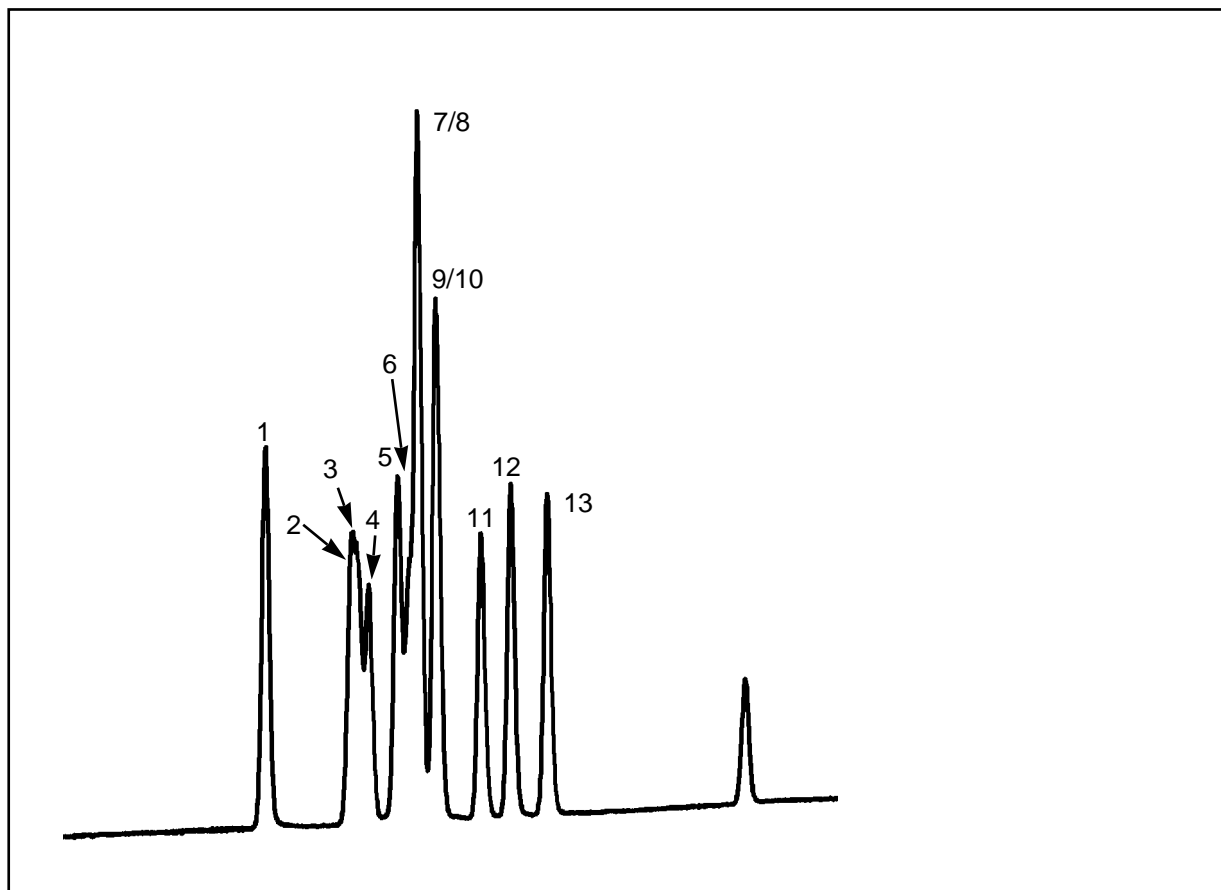
C18:1 isomers

Fatty Acid Methyl Esters

Peak No.	FAME	ECL#1.
1	C18:0	18.00
2	C18:1n12t	18.19
3	C18:1n11t	18.20
4	C18:1n9t	18.22
5	C18:1n7t	18.28
6	C18:1n12c	18.31
7	C18:1n6t	18.32
8	C18:1n11c	18.33
9	C18:1n5t	18.36
10	C18:1n9c	18.37
11	C18:1n7c	18.47
12	C18:1n6c	18.52
13	C18:1n5c	18.60

**C18:1 Isomer Standard**

Part No.: 054624  
 Phase: BPX70, 0.25µm  
 Column: 120m x 0.25mm I.D.  
 Initial Temp.: 130°C  
 Rate: 1°C/min  
 Final Temp.: 220°C  
 Carrier Gas: He, 60 psi  
 Detector: F.I.D., 280°C  
 Gas velocity: 20cm/sec at 130°C



visit [www.sge.com](http://www.sge.com) or contact our technical Customer Support Team on: [techsupport@sge.com](mailto:techsupport@sge.com)

SGE International Pty. Ltd.  
 email: support@sge.com

SGE Incorporated (USA)  
 email: usa@sge.com

SGE (France) Sarl  
 email: france@sge.com

SGE Deutschland GmbH  
 email: germany@sge.com

SGE Japan Inc.  
 email: sgejpn@itjit.ne.jp

SGE Australia Pty. Ltd.  
 email: sales@sge.com

SGE Europe Ltd. (UK)  
 email: uk@sge.com

SGE (Italia) Srl.  
 email: sge.italia@tin.it

SGE China Service Centre  
 email: sge@bj.col.com.cn

SGE India  
 email: sgeindia@bom4.vsnl.net.in